

# CS-390 SPECTRO PHOTOMETER



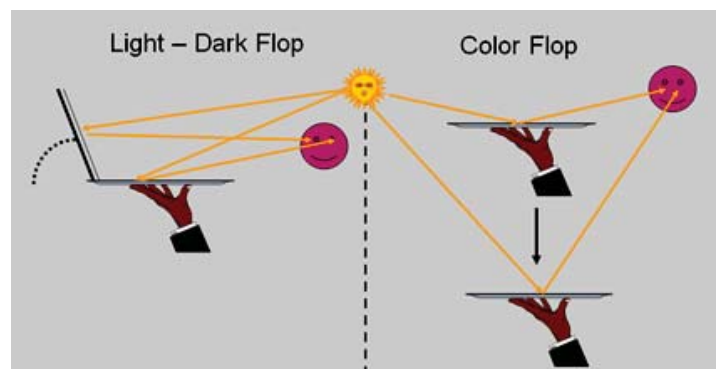
Part 1. Why need three angles spectrophotometer for color measurement?

1. Three angles color spectrophotometer is mainly used for car paint industry to measure the metallic paint, pearlescent paint and effective paint.



- Metallic Paint
- Pearlescent Paint
- Effective Paint

**2. Observing the effective paint from different angles, the human eye has different color perception.**



So it is necessary to measure the car paint with multi-angles spectrophotometer. As show in the following figure, the silver metallic paint has different reflectance under different angles.



[salesitokin@gmail.com](mailto:salesitokin@gmail.com)



[www.itokin2000.com](http://www.itokin2000.com)

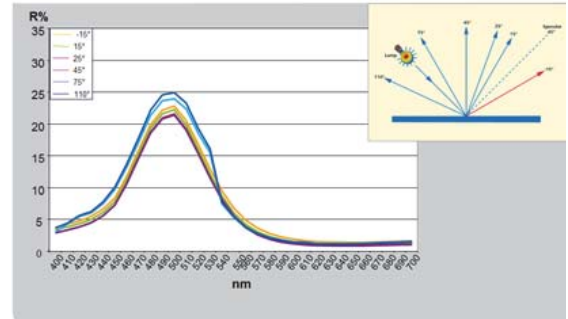


02-9744354-6

# CS-390 SPECTRO PHOTOMETER



Spectral reflectance – Solid Green



Three Angles Color Spectrophotometer Measurement Interface

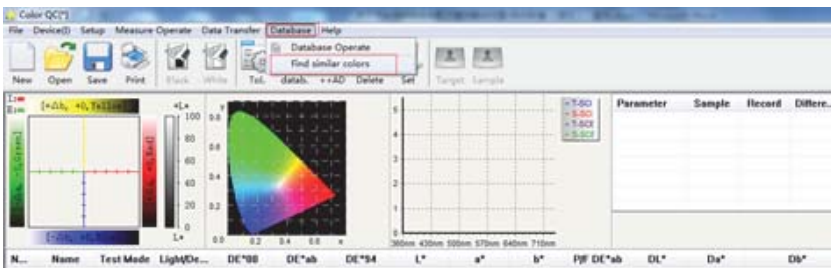
## Part 2. How to find car paint formula?

We will need spectrophotometer and software, firstly. Now we introduce how to do it step by step.

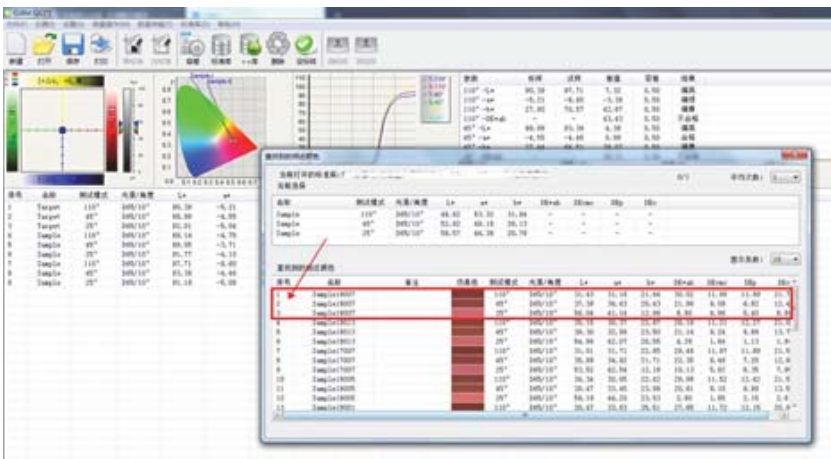
# SOFTWARE

Step 1. Car paint manufacturer will build the color formula database in instrument PC software.

Step 2. Open the PC software, click "database-find similar color".




Step 3. Measure the sample, software will help to find the most similar color and get formula.



 [salesitokin@gmail.com](mailto:salesitokin@gmail.com)

 [www.itokin2000.com](http://www.itokin2000.com)

 02-9744354-6