

## Radial force measuring axle RFS<sup>®</sup> 150



with aluminium guide roller - 99/94-23

(Illustration shows RFS<sup>®</sup>150)

- outer  $\varnothing$  99mm, root  $\varnothing$  94mm
- cylindrical running surface, 23 mm wide, with flanges
- for journal  $\varnothing$  5mm
- **roller surface: aluminium, anodized**
- incl. easy running bearings with low friction
- weight of the roller incl. bearings approx. 180g
- suitable for use on RFS<sup>®</sup> / RFS<sup>®</sup> E sensors
- option: roll holder
- HG dwg. 64\_254\_319

## Radial force measuring axle RFS<sup>®</sup> 150



with aluminium U-groove guide pulley - 108/95-12  
(Illustration shows RFS<sup>®</sup>150)

- outer  $\varnothing$  108mm, root  $\varnothing$  95mm, width 12mm
- profile of the pulley: U-groove
- for journal  $\varnothing$  5mm
- **pulley surface: untreated aluminium**
- incl. easy running bearings with low friction
- weight of the pulley incl. bearings approx. 120g
- suitable for use on RFS<sup>®</sup> / RFS<sup>®</sup> E sensors
- option: roll holder
- HG dwg. 601330



## Radial force measuring axle RFS<sup>®</sup> 150

with aluminium V-groove guide pulley - 114/100-6  
(Illustration shows RFS<sup>®</sup>150)

- outer  $\varnothing$  114mm, root  $\varnothing$  100mm, width 6mm
- profile of the roll: V-groove
- for journal  $\varnothing$  5mm
- **pulley surface: aluminium, anodized, EV1**
- incl. easy running bearings with low friction
- weight of the pulley incl. bearings approx. 39g
- suitable for use on RFS<sup>®</sup> / RFS<sup>®</sup> E sensors
- option: roll holder
- HG dwg. 624136

## Radial force measuring axle RFS<sup>®</sup> 150

with V-groove guide pulley - 168/150-13

(Illustration shows RFS<sup>®</sup>150)

- outer  $\varnothing$  168mm, root  $\varnothing$  150mm, width 13mm
- profile of the pulley: V-groove
- for journal  $\varnothing$  10mm
- **pulley surface: untreated aluminium**
- incl. easy running bearings with low friction
- weight of the pulley incl. bearings approx. 180g
- suitable for use on RFS<sup>®</sup> / RFS<sup>®</sup> E sensors
- option: roll holder
- HG dwg. 64\_255\_782





## Radial force measuring axle RFS<sup>®</sup> 150

with V-groove guide pulley - 168/150-13  
(Illustration shows RFS<sup>®</sup>150)

- outer  $\varnothing$  168mm, root  $\varnothing$  150mm, width 13mm
- profile of the pulley: V-groove
- for journal  $\varnothing$  10mm
- **pulley surface: aluminium, hard-coated**
- incl. easy running bearings with low friction
- weight of the pulley incl. bearings approx. 160g
- suitable for use on RFS<sup>®</sup> / RFS<sup>®</sup> E sensors
- option: roll holder
- HG dwg. 64\_255\_782



## Radial force measuring axle RFS<sup>®</sup> 150

with V-groove guide pulley - 168/150-13

(Illustration shows RFS<sup>®</sup>150)

- outer  $\varnothing$  168mm, root  $\varnothing$  150mm, width 13mm
- profile of the roll: V-groove
- for journal  $\varnothing$  10mm
- **pulley surface: untreated aluminium, groove: plasma-coated**
- incl. easy running bearings with low friction
- weight of the pulley incl. bearings approx. 180g
- suitable for use on RFS<sup>®</sup> / RFS<sup>®</sup> E sensors
- option: roll holder
- HG dwg. 64\_255\_782



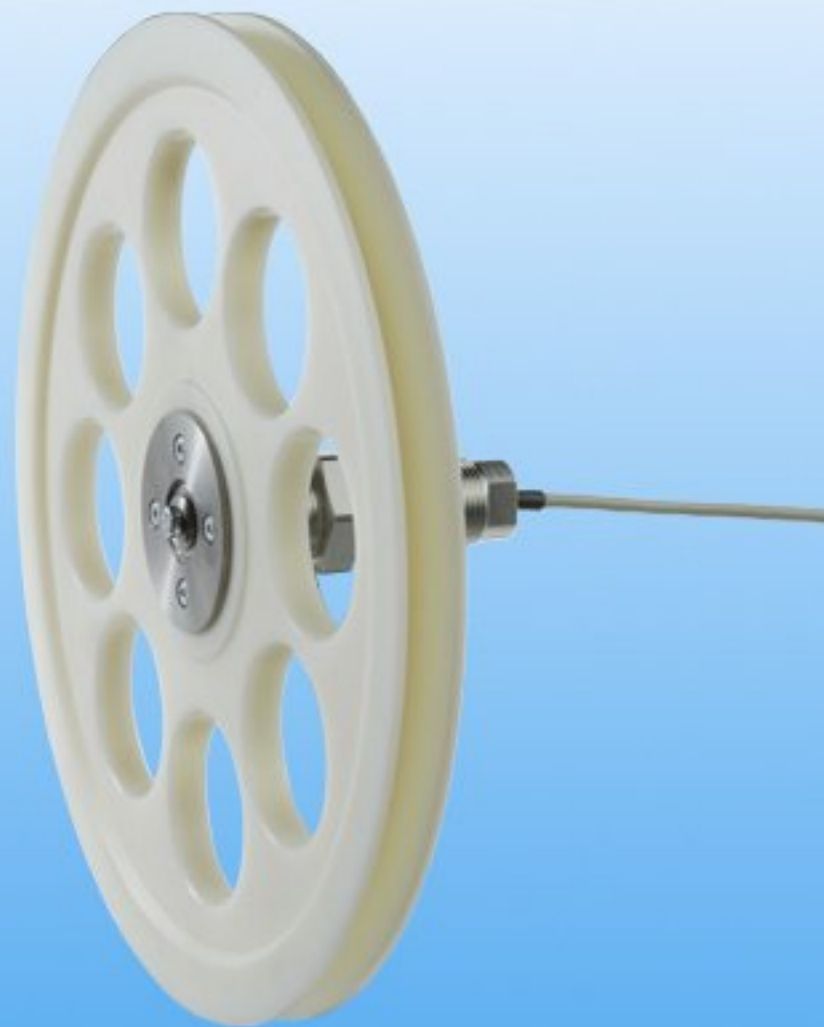


## Radial force measuring axle RFS<sup>®</sup> 150

with PA6 rope pulley - 180/150-18.5  
(Illustration shows RFS<sup>®</sup>150)

- outer  $\varnothing$  180mm, root  $\varnothing$  150mm, width 18.5mm
- profile of the roll: V-groove
- for journal  $\varnothing$  10mm
- **pulley surface: untreated PA6**
- incl. easy running bearings with low friction and journal adaptor
- weight of the pulley incl. bearings approx. 500g
- suitable for use on RFS<sup>®</sup> / RFS<sup>®</sup> E sensors
- option: roll holder
- HG dwg. 621131

## Radial force measuring axle RFS<sup>®</sup> 150



with PA6 rope pulley - 270/240-18  
(Illustration shows RFS<sup>®</sup>150)

- outer  $\varnothing$  270mm, root  $\varnothing$  240mm, width 18mm
- profile of the pulley: V-groove
- for journal  $\varnothing$  10mm
- **pulley surface: untreated PA6**
- incl. easy running bearings with low friction and journal adaptor
- weight of the pulley incl. bearings approx. 800g
- suitable for use on RFS<sup>®</sup> / RFS<sup>®</sup> E sensors
- option: roll holder
- HG dwg. K653345



## Radial force measuring axle RFS<sup>®</sup> 150

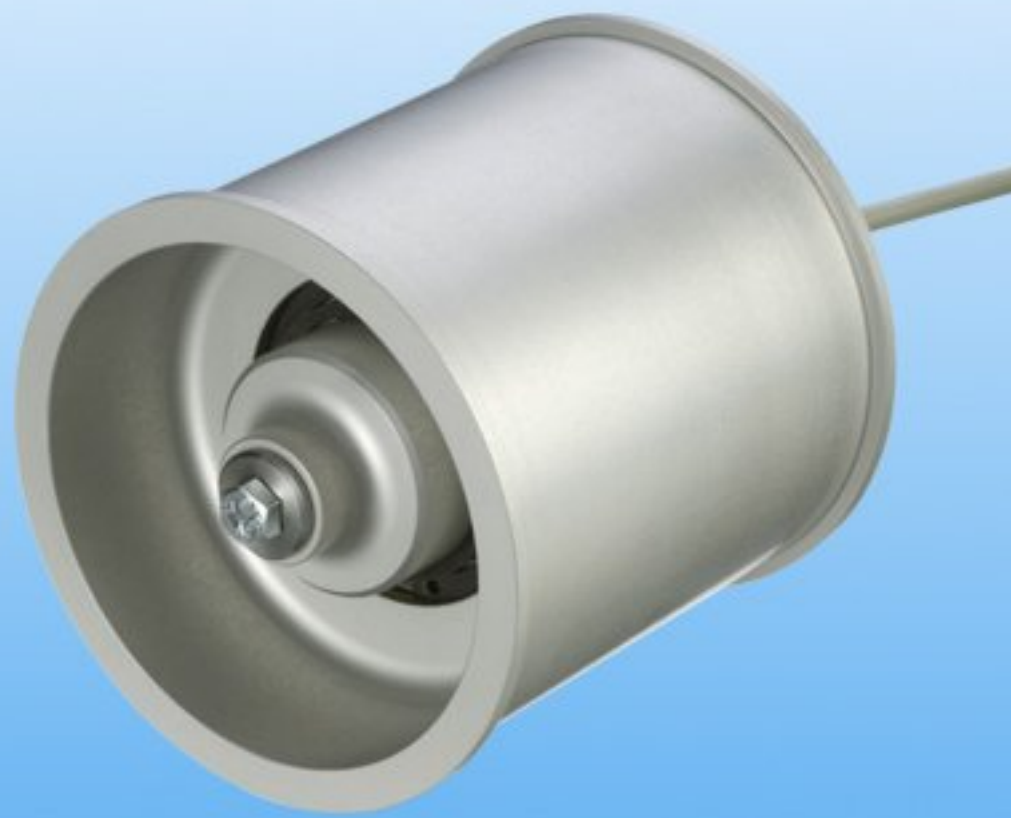


with POM guide roller - 80/75-55

(Illustration shows RFS<sup>®</sup>150)

- outer  $\varnothing$  80mm, root  $\varnothing$  75mm
- cylindrical running surface, 55 mm wide, with flanges
- for journal  $\varnothing$  8mm
- **roller surface: POM**
- incl. easy running bearings with low friction
- weight of the roller incl. bearings approx. 80g
- suitable for use on RFS<sup>®</sup> / RFS<sup>®</sup> E sensors
- option: roll holder
- HG dwg. 623235

## Radial force measuring axle RFS<sup>®</sup> 150



with cylindrical aluminium guide roller - 86/80-80  
(Illustration shows RFS<sup>®</sup>150)

- outer  $\varnothing$  86mm, root  $\varnothing$  80mm, width 80mm
- cylindrical running surface, 80 mm wide, with flanges
- for journal  $\varnothing$  10mm
- **roller surface: untreated aluminium**
- incl. easy running bearings with low friction and journal adaptor
- weight of the roller incl. bearings approx. 250g
- suitable for use on RFS<sup>®</sup> / RFS<sup>®</sup> E sensors
- option: roll holder
- HG dwg. 600751

## Radial force measuring axle RFS<sup>®</sup> 150

with aluminium V-groove guide pulley

and indicated material path



## Radial force measuring axle RFS® 150

Illustration here (RFS®150):

**with modified threaded housing**

- 2 flat surfaces 21mm wide running the entire length
- frontal turned off  $\varnothing$  21mm, 5mm deep
- HG dwg. 620330

**with aluminium pulley, convex 30/27, 16-30**

- convex shape, from  $\varnothing$  30mm crown to  $\varnothing$  27,16mm edge
- width of running surface 30mm
- for journal  $\varnothing$  8mm
- incl. easy running bearings with low friction
- **pulley surface: untreated aluminium**
- weight of the pulley incl. bearings ca. 49g
- suitable for use on RFS® / RFS® E sensors
- option: roll holder
- HG dwg. 620236





## Radial force measuring axle RFS<sup>®</sup> 150



with aluminium guide roller - cylindrical 25/25-40  
and winding protection

(Illustration shows RFS<sup>®</sup>150)

- Ø 25mm,
- cylindrical running surface, 40mm wide, without flanges
- for journal Ø 10mm
- **roller surface: untreated aluminium**
- incl. winding protection on fastening side
- incl. easy running bearings with low friction
- weight of the roll incl. bearings approx. 50g
- suitable for use on RFS<sup>®</sup> / RFS<sup>®</sup> E sensors
- option: roll holder
- HG dwg. K661436

## Radial force measuring axle RFS<sup>®</sup> 150



### Various bearing journal adapters

- to adapt customer's pulleys on RFS 150 and RFS 150-E sensors
- custom-specific / application-specific design
- short-term delivery
- available for all RFS standard bearing journals  $\varnothing$  5mm, 8mm and 10mm

## Radial force measuring axle RFS<sup>®</sup> 150

Radial force sensor RFS<sup>®</sup> 150

- with special bearing journal



## Radial force measuring axle RFS<sup>®</sup> 150

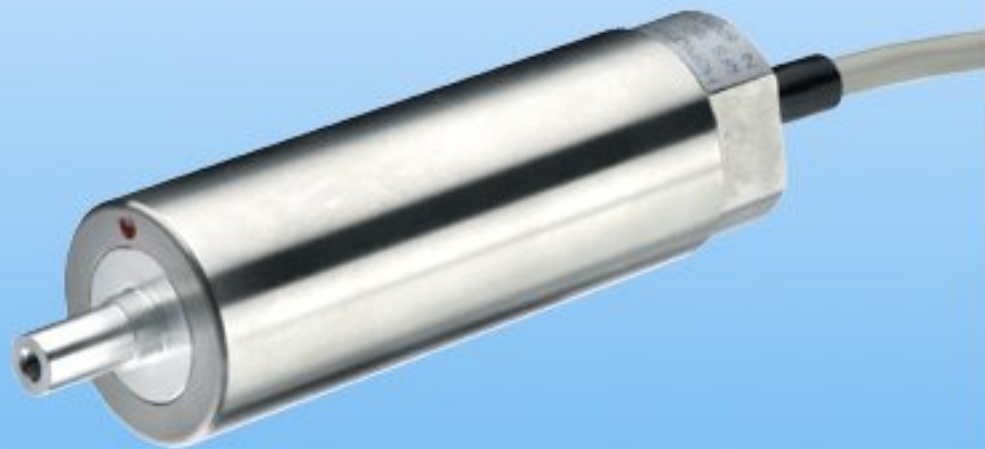


Illustration here:

- RFS 150
- with option cylindrical sensor housing  $\varnothing$  22 mm
- dimensions as per dwg. K651733



## Radial force measuring axle RFS<sup>®</sup> 150

### Ceramic pin with holder



- to be fitted on the bearing journal (8 mm) of RFS 150 sensors
- as per dwg. 611538

## Radial force measuring axle RFS® 150



Illustration here:

- web tension measuring module CFC
- especially for low forces
  - combined with large measuring width / material width
- length and diameter of measuring roll customized
- roll sleeve of CFC / Carbon Fiber Composites
- front view

## Radial force measuring axle RFS<sup>®</sup> 150

Radial force sensor RFS<sup>®</sup> 150

- standard bearing journal Ø 5, 8 and 10mm



## Radial force measuring axle RFS<sup>®</sup> 150



Illustration here:

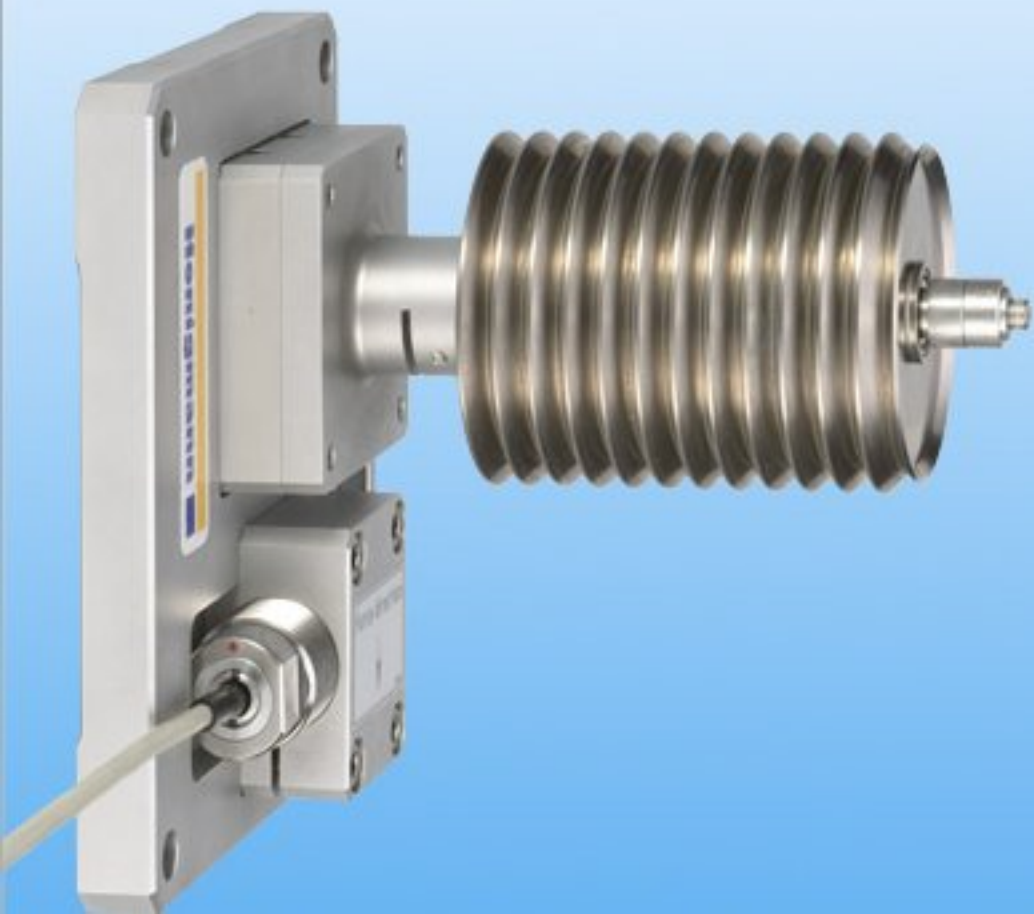
3RTS-500

- width of supporting board 500mm
- double radius roller, aluminium finish: hard-coated
- with 2 additional guide rollers
- HG dwg. 64\_254\_339



## Radial force measuring axle RFS<sup>®</sup> 150

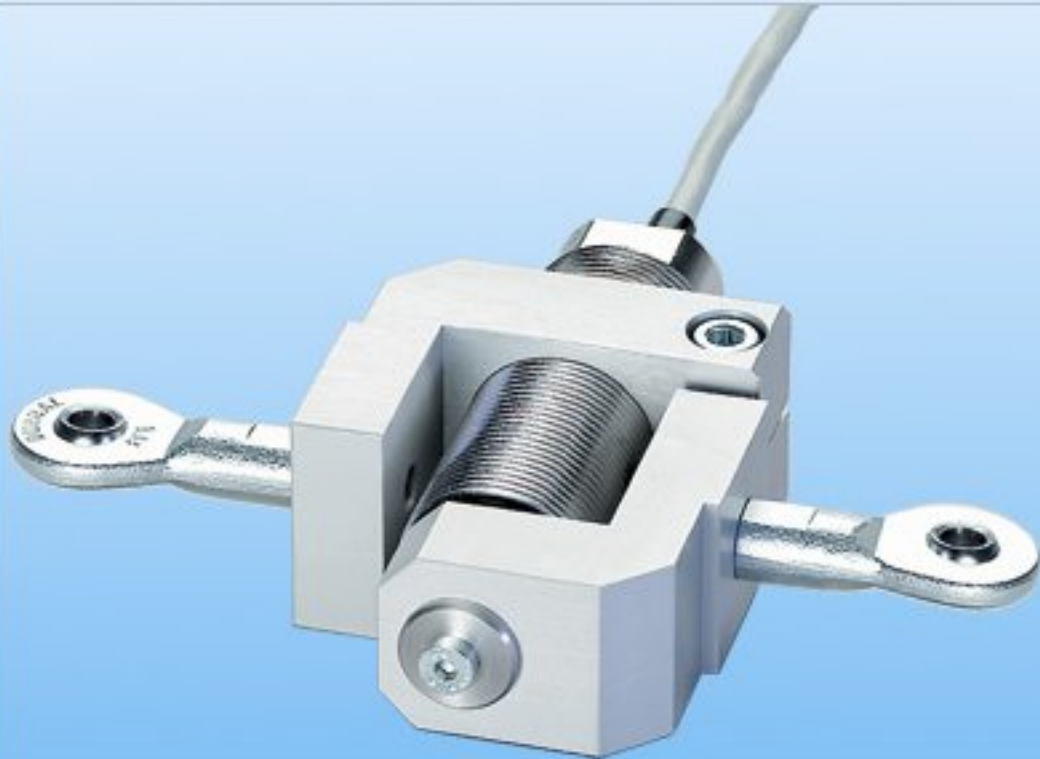
RFS 150 with axle and Roller package with coated surface



## Radial force measuring axle RFS<sup>®</sup> 150

Variant for static force measurement

- tensile and compressive force measurement with Sensor RFS 150
- Adapter bracket with swivel heads for torque free force charging
- pre-finished assembled



## Radial force measuring axle RFS<sup>®</sup> 150



with aluminium U-groove guide pulley - 65/50-24  
(Illustration shows RFS<sup>®</sup>150)

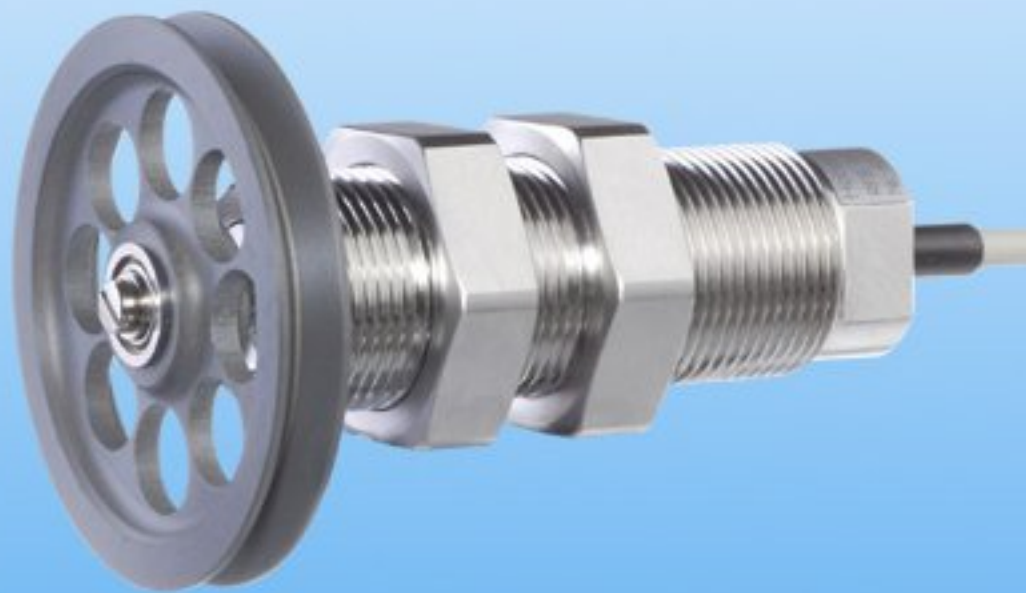
- outer  $\varnothing$  65mm, root  $\varnothing$  50mm
- cylindrical running surface 24 mm wide with flanges
- for journal  $\varnothing$  5mm
- **pulley surface: anti adhesive coating**
- incl. easy running bearings with low friction
- weight of the pulley incl. bearings approx. 45g
- suitable for use on RFS<sup>®</sup> / RFS<sup>®</sup> E sensors
- option: roll holder
- HG dwg. 601639

## Radial force measuring axle RFS<sup>®</sup> 150

with aluminium V-groove guide pulley - 50/42-8

(Illustration shows RFS<sup>®</sup>150)

- outer  $\varnothing$  50mm, root  $\varnothing$  42mm, width 8mm
- profile of the pulley: V-groove
- for journal  $\varnothing$  5mm
- **pulley surface: hard-coated**
- incl. easy running bearings with low friction
- weight of the pulley incl. bearings approx. 30g
- suitable for use on RFS<sup>®</sup> / RFS<sup>®</sup> E sensors
- option: roll holder
- HG dwg. 64\_255\_808





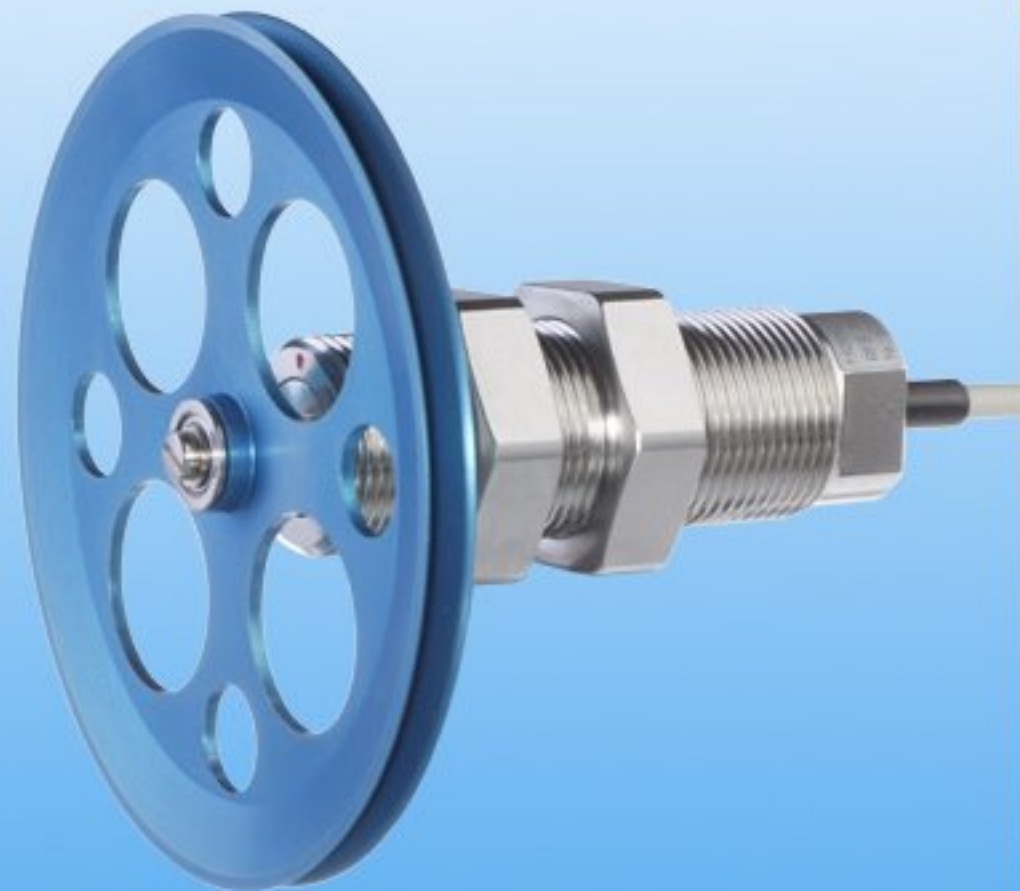
## Radial force measuring axle RFS<sup>®</sup> 150



with VA U-groove guide pulley - 90/70-17.5  
(Illustration shows RFS<sup>®</sup>150)

- outer  $\varnothing$  90mm, root  $\varnothing$  70mm, running surface, 17.5mm wide, with flanges
- profile of the pulley: U-groove
- for journal  $\varnothing$  10mm
- pulley surface: **V2A**, if necessary **nitrogen hardened**
- incl. easy running bearings with low friction
- weight of the pulley incl. bearings approx. 600g
- suitable for use on RFS<sup>®</sup> / RFS<sup>®</sup> E sensors
- option: roll holder
- HG dwg. 64\_255\_805

## Radial force measuring axle RFS® 150



with aluminium V-groove guide pulley - 97/83-6  
(Illustration shows RFS®150)

- outer  $\varnothing$  97mm, root  $\varnothing$  83mm, width 6mm
- profile of the pulley: V-groove
- for journal  $\varnothing$  5mm
- **pulley surface: aluminium, blue anodized**
- incl. easy running bearings with low friction
- weight of the pulley incl. bearings approx. 31g
- suitable for use on RFS® / RFS® E sensors
- option: roll holder
- HG dwg. 64\_255\_806

## Radial force measuring axle RFS<sup>®</sup> 150



with aluminium guide pulley - 97/86-16

(Illustration shows RFS<sup>®</sup>150)

- outer  $\varnothing$  97mm, groove  $\varnothing$  86mm
- cylindrical running surface, 16 mm wide, with flanges
- for journal  $\varnothing$  5mm
- **pulley surface: aluminium, hard-coated**
- incl. easy running bearings with low friction
- weight of the pulley incl. bearings approx. 90g
- suitable for use on RFS<sup>®</sup> / RFS<sup>®</sup> E sensors
- option: roll holder
- HG dwg. 611143

## Radial force measuring axle RFS® 150



with aluminium V-groove guide pulley - 97/86-10  
(Illustration shows RFS®150)

- outer  $\varnothing$  97mm, root  $\varnothing$  86mm, width 10mm
- profile of the pulley: V-groove
- for journal  $\varnothing$  5mm
- **pulley surface: aluminium, anodized**
- incl. easy running bearings with low friction
- weight of the roll incl. bearings approx. 47g
- suitable for use on RFS® / RFS® E sensors
- option: roll holder
- HG dwg. 64\_255\_771