



Image Color Spectrophotometer CS-828

—Itokin Technology.co.,ltd

Models



CS-828



CS-828-V

Application



Rock Paint



Buttons & Zipper
Heads & Accessories



Zipper & Footwear



Complex Textured Samples



Artificial Stone Paint



Jewelry & Tooth



Wood Pattern Paper



Ceramic Tiles

Specially Designed for Samples with Complex Texture and Small Size

Feature



Feature 1

Auto Calibration

Image spectrophotometer adopts advanced auto sensing technology to realized auto calibration for easier operation and better user experience.

Feature 2

Its test result is consistency to other Spectrophotometer made by CHN Spec

- ✓ Adopt principle of spectroscopy for high accuracy test result
- ✓ It can measure surface with 24 kinds of illumination and more than 30 kinds of color parameters for choice.
- ✓ It can provide SCI/SCE test result, the test result is not affected by the surface texture or material of the sample



Feature 3

Ultra Small Measurement Area

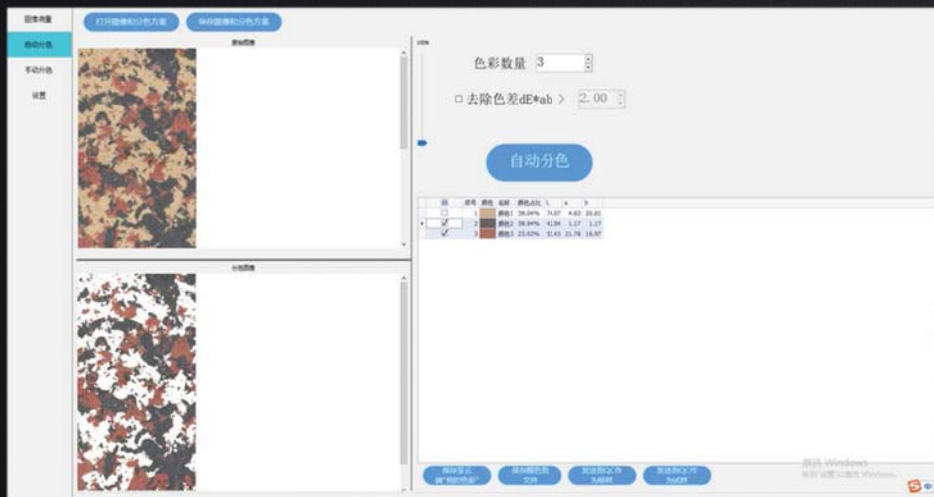
Max. measurement area can reach 0.09 mm^2
($0.3 \times 0.3 \text{ mm}$)

Any point on sample can be chosen to check color

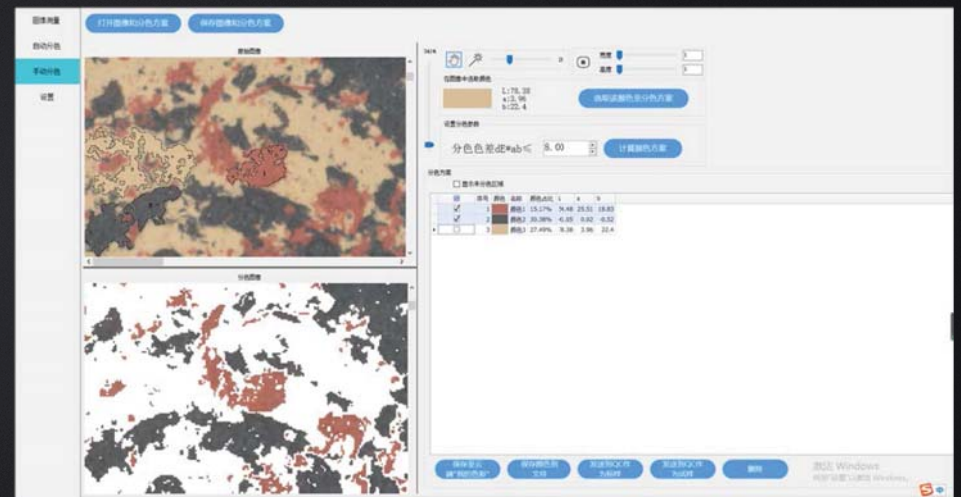


Feature 4

Sample color can be separated by manual or by software automatically



Separate Color by Software



Separate Color by Manual

Feature 5

CS-828 can work with color matching software to get recipe



Parameter Comparison with Competition Model-1

Type	CHNSpec CS-828	Dataclor Spectra Vision
Illumination/ Viewing System	Reflectance: d/8(Diffused illumination, 8 degree viewing)	Diffuse illumination, 8° viewing
Illumination Source	Pulsed xenon, filtered to provide D65 illumination including UV component	Full Wavelength LED
Sensor	Silicon Photodiode Array	
Sphere Diameter	Diameter 152 mm / 6.0 inches	Diameter 152 mm / 6.0 inches
Wavelength Range	400nm-700nm	400nm-700nm
Wavelength Pitch	10nm	10nm
Reflectance Range	0 to 200%	0 to 200%
Light Source	Full Wavelength LED (UV component can be custom made)	Pulsed xenon, filtered to provide D65 illumination including UV component
Measurement Aperture	30*30mm or 100*100mm or custom made	Square. 25 mm illuminated/ 22.7 mm viewed
Image resolution	600x600 (for 30x30mm Aperture)	821 x 821
Repeatability	XLAV Chromaticity value: Standard deviation within $\Delta E^*_{ab} 0.03$, Max. within $\Delta E^*_{ab} 0.1$ (0.09mm ² test area, when a white tile is measured 30 x at 10-second intervals after white calibration)	0.03 dE (max) 20 Read on White Tile Using Two Flashes (CIELAB)
Inter-Instrument Agreement	XLAV $\Delta E^*_{ab} 0.4$ (BCRA Series II, Average measurement of 12 tiles, at 23°C)	0.25 (max)* 0.15 (avg)*

Parameter Comparison with Competition Model-2

Type	Image Color Spectrophotometer CS-828	Dataclor Spectra Vision
Automated, adjustable UV Calibration	No	Yes
UV Cutoff Filters	without	400 nm; 420 nm; 460 nm
Sample Viewing Camera	No	Yes
Output	QTX,CHNIMG	QTX2, Reflectance Hypercube, QTX
Operating Software	Color Expert	Tools SV
Operating Environment	5-40°C (40-104F), relative humidity 80% (at 35°C) no condensation	Temperature: 10° C to 35° C Maximum Relative Humidity: 20%-85% non-condensing Recommended Relative Humidity: 50% +/-15% non-condensing

Image Color Spectrophotometer Advantages

- ✓ **Auto calibration**
- ✓ **Specially Designed for Samples with Complex Texture and Small Size**
- ✓ **Its test result is consistency to other Spectrophotometer made by CHN Spec**
- ✓ **Ultra Small Measurement Area (0.3x0.3mm test area)**
- ✓ **Sample color can be separated by manual or by software automatically**
- ✓ **It can work with color matching software to get recipe**
- ✓ **Advanced Technology**



Line : @itokin2000.com

Email : salesitokin@gmail.com

Web : www.itokin2000.com
