

VMM MANUAL GZ3020

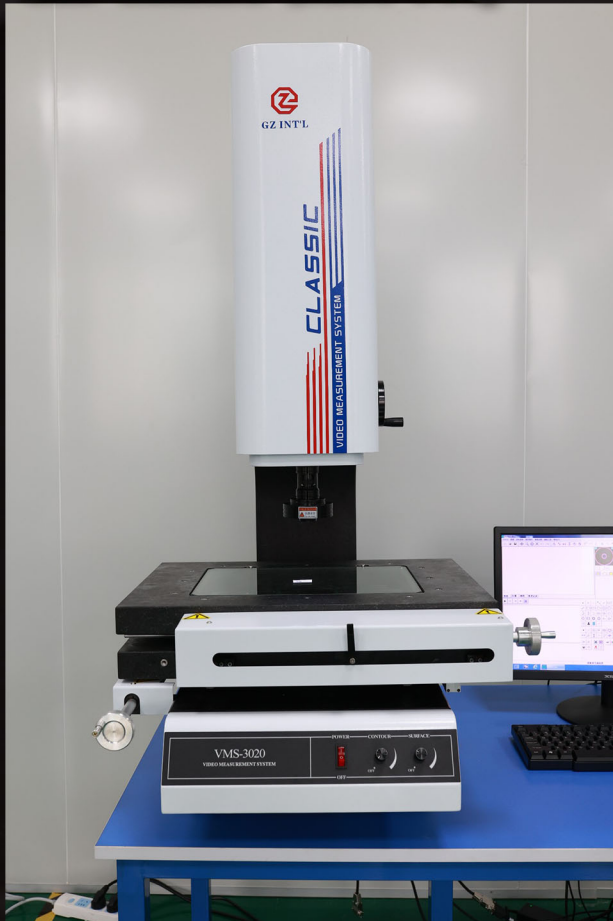
Ex.y : $\leq(2.5+L/200 \text{ um})$

Video Magnification : 26-130X

Zoom Lens magnification : 0.7-4.5X

Camera : 1/2' Color

CCD Camera (1200 TVL)



FEATURE

Granite Base

00-grade natural granite base, column and worktable make it strong rigidity and small deformation to ensure stable accuracy.

High-Resolution Profile Ruler:

The grating ruler adopts the trusted high-resolution profile ruler of the famous domestic military industry brand.

Precision Linear Guide:

Three-axis adopts precision linear guide to ensure stable accuracy and machine service life.

High-Resolution Camera:

High-quality optical system and high-resolution camera, clear picture, making the measurement more accurate.

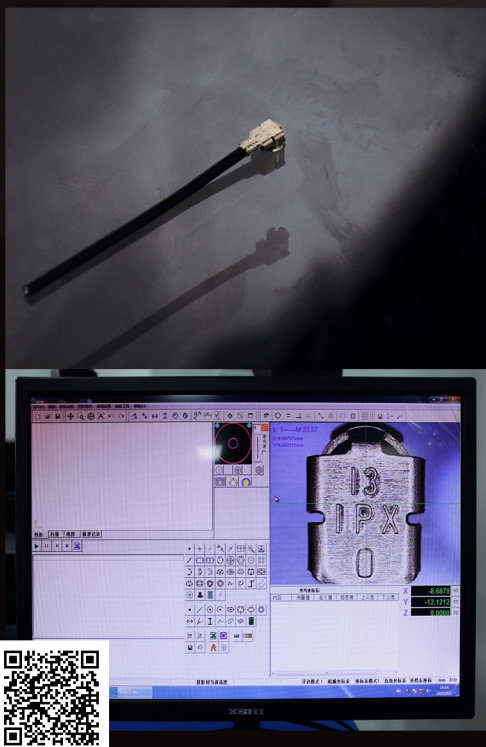


MAIN PARTS

The machine consists of Zoom lens, Guide, Grating ruler, Optical Lens Cabinet. Each part adopts famous and stable components, each component uses high quality material, and use advanced and reliable brand. Each unit is running reliable, long use and convenient operation and maintenance can be insured.

SPECIFICATION

MODEL	GZ-2010	GZ-2515	GZ-3020	GZ-4030	GZ-5040
Travel (mm)	200 x 100	250 x 150	310 x 210	410 x 310	510 x 410
Dimension (LxWxH) (mm)	750 x 500 x 1000	800 x 550 x 1100	800 x 600 x 1100	920 x 720 x 1150	1020 x 820 x 1200
Worktable Dimension	400 x 300	480 x 350	550 x 400	660 x 520	780 x 640
Glass Table Dimension	250 x 150	300 x 200	350 x 250	450 x 350	550 x 450
Measuring Load (kg)	15kg	20kg	25kg	30kg	35kg
Machine Weight (kg)	180kg	220kg	240kg	260kg	340kg
Measuring System	Camera 1/2" Color CCD Camera (1200 TVL)				
	Zoom Lens magnification 0.7-4.5x				
	Working Distance: 92mm				
	Video magnification 26-130x				
	F.O.V: 7-1.1mm				
Stroke (mm)	200mm (Special customized: Can reach to 400mm)				
Accuracy	Ex.y $\leq 2.5+L/200\mu\text{m}$ (L. be regarded as measured length), units:(mm)				
Illumination	Surface light and Transmitted Light source adopt LED, brightness adjustable				
Power	100~220V $\pm 10\%$ (AC), 50~60HZ, 31W				
Work environment	Temperature: 10-34°C ; Humidity: 30%-76%				



VMM MANUAL GZ4020

Ex.y : $\leq(2.5+L/200 \text{ um})$
 Video Magnification : 26-130X
 Zoom Lens magnification : 0.7-4.5X
 Camera : 1/2' Color
 CCD Camera (1200 TVL)



FEATURE

- Granite Base**
00-grade natural granite base, column and worktable make it strong rigidity and small deformation to ensure stable accuracy.
- High-Resolution Profile Ruler:**
The grating ruler adopts the trusted high-resolution profile ruler of the famous domestic military industry brand.
- Precision Linear Guide:**
Three-axis adopts precision linear guide to ensure stable accuracy and machine service life.
- High-Resolution Camera:**
High-quality optical system and high-resolution camera, clear picture, making the measurement more accurate.

MAIN PARTS

The machine consists of Zoom lens, Guide, Grating ruler, Optical Lens Cabinet.
 Each part adopts famous and stable components, each component uses high quality material, and use advanced and reliable brand. Each unit is running reliable, long use and convenient operation and maintenance can be insured.



SPECIFICATION

MODEL	GZ-2010	GZ-2515	GZ-3020	GZ-4030	GZ-5040
Travel (mm)	200 x 100	250 x 150	310 x 210	410 x 310	510 x 410
Dimension (LxWxH) (mm)	750 x 500 x 1000	800 x 550 x 1100	800 x 600 x 1100	920 x 720 x 1150	1020 x 820 x 1200
Worktable Dimension	400 x 300	480 x 350	550 x 400	660 x 520	780 x 640
Glass Table Dimension	250 x 150	300 x 200	350 x 250	450 x 350	550 x 450
Measuring Load (kg)	15kg	20kg	25kg	30kg	35kg
Machine Weight (kg)	180kg	220kg	240kg	260kg	340kg
Measuring System	Camera 1/2" Color CCD Camera (1200 TVL)				
	Zoom Lens magnification 0.7-4.5x				
	Working Distance: 92mm				
	Video magnification 26-130x				
	F.O.V: 7-1.1mm				
Stroke (mm)	200mm (Special customized: Can reach to 400mm)				
Accuracy	Ex.y $\leq 2.5+L/200\mu\text{m}$ (L. be regarded as measured length), units:(mm)				
Illumination	Surface light and Transmitted Light source adopt LED, brightness adjustable				
Power	100~220V $\pm 10\%$ (AC), 50~60HZ, 31W				
Work environment	Temperature: 10-34°C ; Humidity: 30%-76%				



VMM MANUAL GZ4020MCP PROBE

Ex.y : $\leq(2.5+L/200 \text{ um})$
 Video Magnification : 26-130X
 Zoom Lens magnification : 0.7-4.5X
 Camera : 1/2' Color
 CCD Camera (1200 TVL)

MAIN PARTS

The machine consists of Zoom lens, Guide, Grating ruler, Optical Lens Cabinet.

Each part adopts famous and stable components, each component uses high quality material, and use advanced and reliable brand. Each unit is running reliable, long use and convenient operation and maintenance can be insured.

FEATURE

Granite Base

00-grade natural granite base, column and worktable make it strong rigidity and small deformation to ensure stable accuracy.

High-Resolution Profile Ruler:

The grating ruler adopts the trusted high-resolution profile ruler of the famous domestic military industry brand.

Precision Linear Guide:

Three-axis adopts precision linear guide to ensure stable accuracy and machine service life.

High-Resolution Camera:

High-quality optical system and high-resolution camera, clear picture, making the measurement more accurate.



SPECIFICATION



MODEL	GZ-2010	GZ-2515	GZ-3020	GZ-4030	GZ-5040
Travel (mm)	200 x 100	250 x 150	310 x 210	410 x 310	510 x 410
Dimension (LxWxH) (mm)	750 x 500 x 1000	800 x 550 x 1100	800 x 600 x 1100	920 x 720 x 1150	1020 x 820 x 1200
Worktable Dimension	400 x 300	480 x 350	550 x 400	660 x 520	780 x 640
Glass Table Dimension	250 x 150	300 x 200	350 x 250	450 x 350	550 x 450
Measuring Load (kg)	15kg	20kg	25kg	30kg	35kg
Machine Weight (kg)	180kg	220kg	240kg	260kg	340kg
Measuring System	Camera 1/2" Color CCD Camera (1200 TVL)				
	Zoom Lens magnification 0.7-4.5x				
	Working Distance: 92mm				
	Video magnification 26-130x				
	F.O.V: 7-1.1mm				
Stroke (mm)	200mm (Special customized: Can reach to 400mm)				
Accuracy	Ex.y $\leq 2.5+L/200\mu\text{m}$ (L. be regarded as measured length), units:(mm)				
Illumination	Surface light and Transmitted Light source adopt LED, brightness adjustable				
Power	100~220V $\pm 10\%$ (AC), 50~60HZ, 31W				
Work environment	Temperature: 10-34°C ; Humidity: 30%-76%				

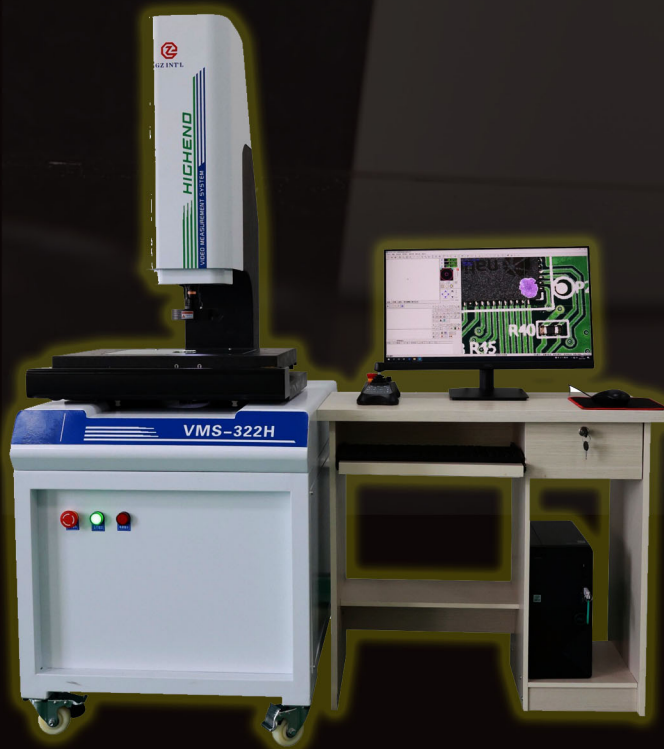
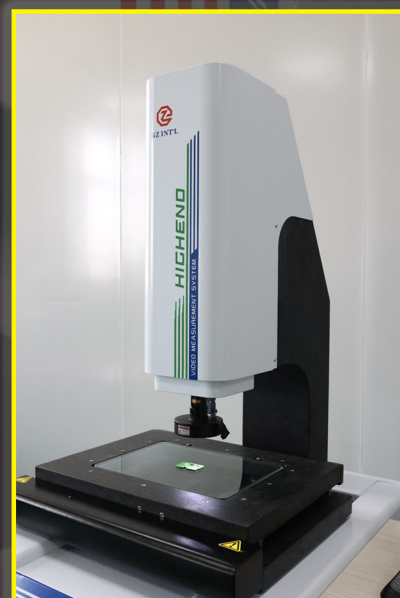
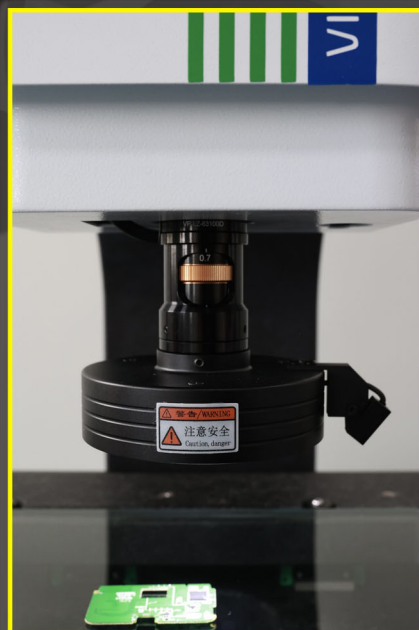


VMM CNC VMS322H

Optical Lens: Image magnification 28X-180X
 CCD: HIKROBOT 1.3 million pixel digital camera
 X/Y axis Measuring Accuracy: $E2(X/Y) = (2.0 + L/200)$
 Grating ruler: LAMOTION 0.5um high precision metal patch ruler

MAIN PARTS

The machine consists of Motor, Guide, Grating ruler, Optical Lens Cabinet, Beautiful, concise and generous appearance design. Each part adopts famous and stable components, each component uses high quality material, and motor control system use advanced and reliable brand. Each unit is running reliable, long use and convenient operation and maintenance can be insured.



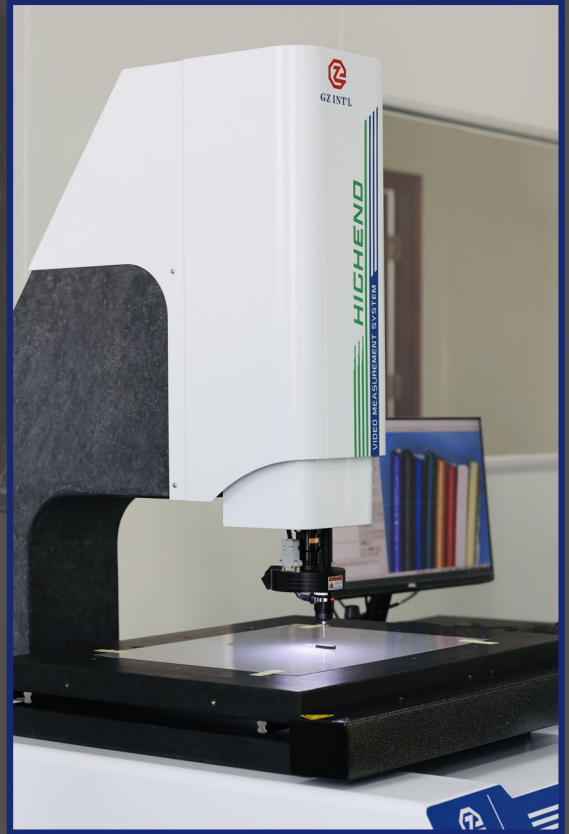
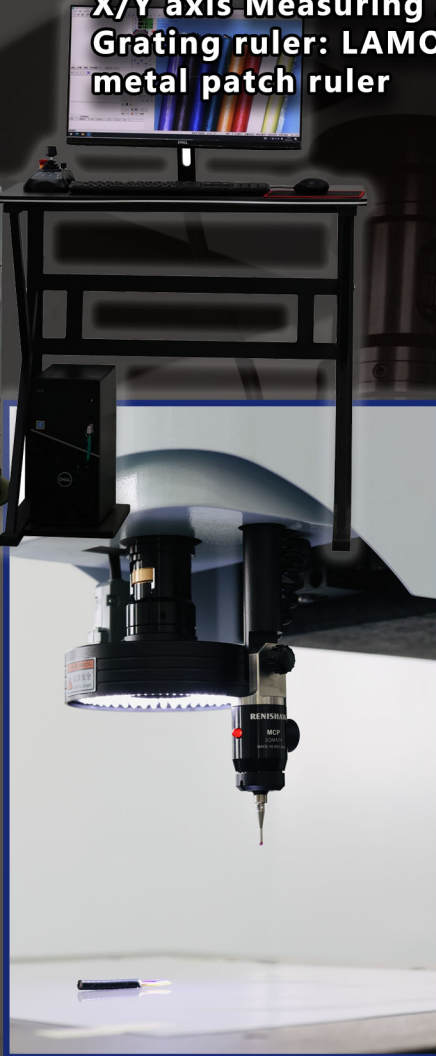
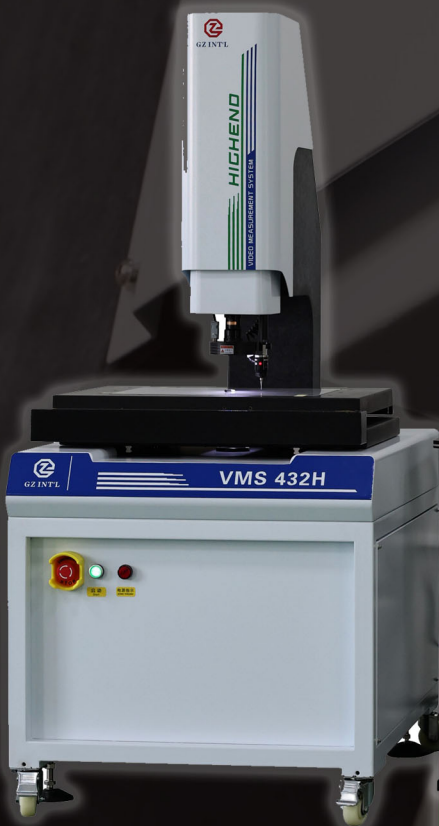
SPECIFICATION

MODEL	VMS-322H	VMS-432H	VMS-542H
Travel (mm)	300X200X200	400X300X200	500X400X200
Dimension (L)(W)(H)(mm)	660X900X1700	880X1000X1700	1000X1100X1750
Weight(kg)	250	280	350
Measuring Load (kg)	25	30	35
X/Y axis Measuring Accuracy (μm)	$E2(X/Y) = (2.0 + L/200)$		
Grating ruler	LAMOTION 0.5um high precision metal patch ruler		
Guide	Taiwan SHAC high precision linear guide		
Drive Method	Taiwan SHAC high-precision ball screw		
CCD	HIKROBOT 1.3 million pixel digital camera		
Lighting	Under contour light	LED parallel profile cold light	
	Surface Light	Programmable LED four-ring and eight-zone surface cold light source with laser pointer	
Optical Lens	Original POMEAS high-definition manual zoom with position lens (image magnification 28X-180X)		
Motor	Three-axis original Japan Nidec servo motor		
Control System	ACT420 precision control system		
Measuring Software	Precision measurement software INSPEC-CNC		
Working Environment	Temperature 20°C±3°C, temperature change <2°C/hr, humidity 30~80%		
Power	220V/50Hz/5A		
Remarks: Domestic/imported probe and 3D measuring software can be selected to achieve precision height measurement function.			



VMM CNC VMS432H Probe

Optical Lens: Image magnification 28X-180X
 CCD: HIKROBOT 1.3 million pixel digital camera
 X/Y axis Measuring Accuracy: $E2(X/Y) = (2.0 + L/200)$
 Grating ruler: LAMOTION 0.5um high precision metal patch ruler



SPECIFICATION

MODEL		VMS-322H	VMS-432H	VMS-542H
Travel (mm)		300X200X200	400X300X200	500X400X200
Dimension (L)X(W)X(H)(mm)		660X900X1700	880X1000X1700	1000X1100X1750
Weight(kg)		250	280	350
Measuring Load (kg)		25	30	35
X/Y axis Measuring Accuracy (μm)		$E2(X/Y) = (2.0 + L/200)$		
Grating ruler		LAMOTION 0.5um high precision metal patch ruler		
Guide		Taiwan SHAC high precision linear guide		
Drive Method		Taiwan SHAC high-precision ball screw		
CCD		HIKROBOT 1.3 million pixel digital camera		
Lighting	Under contour light	LED parallel profile cold light		
	Surface Light	Programmable LED four-ring and eight-zone surface cold light source with laser pointer		
Optical Lens		Original POMEAS high-definition manual zoom with position lens (image magnification 28X-180X)		
Motor		Three-axis original Japan Nidec servo motor		
Control System		ACT420 precision control system		
Measuring Software		Precision measurement software INSPEC-CNC		
Working Environment		Temperature $20^{\circ}\text{C} \pm 3^{\circ}\text{C}$, temperature change $< 2^{\circ}\text{C/hr}$, humidity 30~80%		
Power		220V/50Hz/5A		

Remarks: Domestic/imported probe and 3D measuring software can be selected to achieve precision height measurement function.

MAIN PARTS

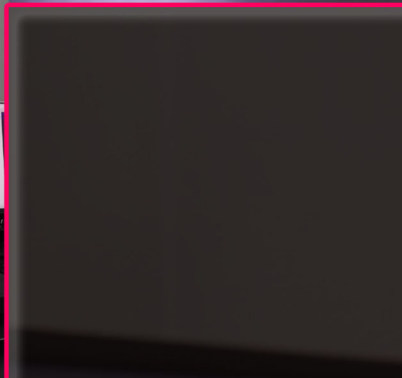
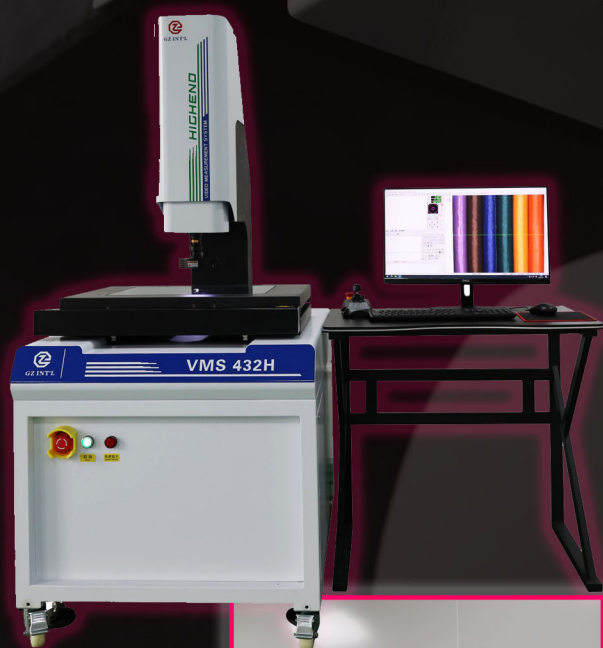
The machine consists of Motor, Guide, Grating ruler, Optical Lens Cabinet, Beautiful, concise and generous appearance design.

Each part adopts famous and stable components, each component uses high quality material, and motor control system use advanced and reliable brand. Each unit is running reliable, long use and convenient operation and maintenance can be insured.



VMM CNC VMS432H

Optical Lens: Image magnification 28X-180X
 CCD: HIKROBOT 1.3 million pixel digital camera
 X/Y axis Measuring Accuracy: $E2(X/Y) = (2.0 + L/200)$
 Grating ruler: LAMOTION 0.5um high precision metal patch ruler



SPECIFICATION

MODEL	VMS-322H	VMS-432H	VMS-542H
Travel (mm)	300X200X200	400X300X200	500X400X200
Dimension (L)X(W)X(H)(mm)	660X900X1700	880X1000X1700	1000X1100X1750
Weight(kg)	250	280	350
Measuring Load (kg)	25	30	35
X/Y axis Measuring Accuracy (μm)	$E2(X/Y) = (2.0 + L/200)$		
Grating ruler	LAMOTION 0.5um high precision metal patch ruler		
Guide	Taiwan SHAC high precision linear guide		
Drive Method	Taiwan SHAC high-precision ball screw		
CCD	HIKROBOT 1.3 million pixel digital camera		
Lighting	Under contour light	LED parallel profile cold light	
	Surface Light	Programmable LED four-ring and eight-zone surface cold light source with laser pointer	
Optical Lens	Original POMEAS high-definition manual zoom with position lens (image magnification 28X-180X)		
Motor	Three-axis original Japan Nidec servo motor		
Control System	ACT420 precision control system		
Measuring Software	Precision measurement software INSPEC-CNC		
Working Environment	Temperature $20^{\circ}\text{C} \pm 3^{\circ}\text{C}$, temperature change $< 2^{\circ}\text{C/hr}$, humidity 30~80%		
Power	220V/50Hz/5A		

Remarks: Domestic/imported probe and 3D measuring software can be selected to achieve precision height measurement function.

MAIN PARTS

The machine consists of Motor, Guide, Grating ruler, Optical Lens Cabinet, Beautiful, concise and generous appearance design.

Each part adopts famous and stable components, each component uses high quality material, and motor control system use advanced and reliable brand. Each unit is running reliable, long use and convenient operation and maintenance can be insured.

