

ITK-HENDO VIDEO SCOPE

Videoscopes, Automotive Borescopes
Handheld articulating 360°all-way.
Optical fiber lighting.
Smooth,Rugged 4-layer sheathing.
Ergonomic grip design.
Very short distal tip for better inspection at
very narrow space.

Detachable parts (One Host can
work with different diameters of
the insertion tube)



The different lenses with different diameters are for diversified applications. It is one of the shortest distal tips on the market, and the rigid end of the bending section is only 13mm long. Such sort rigid section aids in navigating the insertion tube through curved or complicated applications.



- Φ 6.0mm inner clamp via tunnel
- Φ 6.0mm twin lenses front view
- Φ 5.8mm front/ side view
- Φ 5.8mm front view
- Φ 4.0mmfront/side view
- Φ 3.9mmfront view
- Φ 2.8mm front view
- Φ 2.0mm front view

The high-quality lenses can deliver high resolution, sharpness, and image details. Also, it has better performance when under -40℃ or extremely high temperatures.



LINE : @ITKIN2000
 TEL : 02-9744354-6
 EMAIL : SALESITKIN@GMAIL.COM

ITK-HENDO VIDEO SCOPE



4x digital zoom to magnify the image when unable to move the camera tip closer to the desired target. Furthermore, adjustable brightness 8 levels can prevent light washout and help to always provide a clear image.

Demo Exsamppls



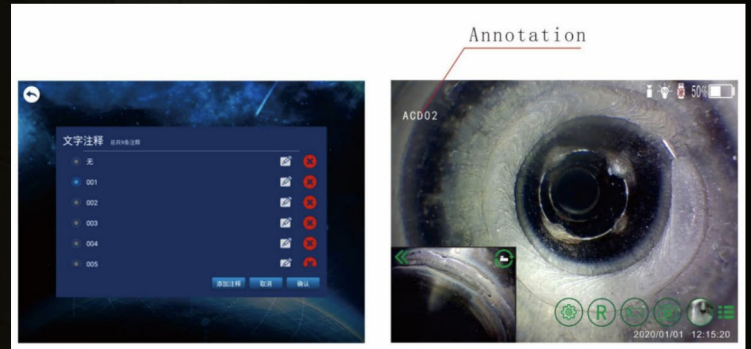
LINE : @ITKIN2000
TEL : 02-9744354-6
EMAIL : SALESITKIN@GMAIL.COM

ITK-HENDO VIDEO SCOPE



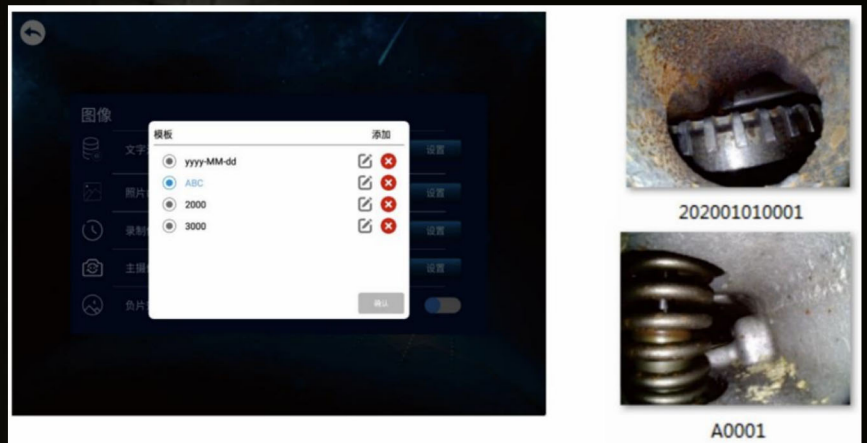
Unlimited preset annotation as watermark in the picture. So it helps you find the inspection flaw at the spot.

Double-Tap to change the location of the watermark in the picture.



Customized Pic name

- Default Name : Y + M +D + SN (Example : 2023123100)
- Customized : Preset Content + SN
- Customized picture name as annoation, you can find any pic from the bulk messy picture.



LINE : @ITOKIN2000
TEL : 02-9744354-6
EMAIL : SALESITOKIN@GMAIL.COM

ITK-HENDO

VIDEO SCOPE



Specification



Environment request	
Working temp.	-10°C-50°C, no preheat need (customized -40°C-85°C)
Probe working temp.	-20°C-70°C (customized temp.)
Storage temp.	-30°C-50°C
Relative humidity	max 95%, No condensation
Waterproof	Insertion tube IP67
Host	
Measurements	350*155*59mm
Battery working time	≥ 4 hours
Weight	0.55kg, with suitcase : 3kg
Display	5.1 inch HD LCD
Display Resolution	640*480
SD card support	32GB(max 128GB)
Video output	HDMI HD Interface Dual Screen Synchronous Display
Probe	
Illuminance	≥120,000 lux
Illumination Type	Fiber lighting
Brightness	8 levels variable
View of angle	80° \ 90° \ 100° \ 120°
Depth of field	3mm-80mm \ 5mm-120mm \ 10mm-300mm \ 15mm-∞
Pixels	160,000 \ 1 million \ 1 million
Outer diameter	2.4 mm 2.8 mm 4 mm 6 mm
Length of the insert tube	0 m-7 m
System/software	
OS	Linux
Video/Image format	MP4/JPEG(.JPG)
Image	Rotate, zoom in/out(4times), capture, video shoot, preview
Digital zoom	4 times
System language	English German Spanish French Italy Japanese Chinese



LINE : @ITOKIN2000
 TEL : 02-9744354-6
 EMAIL : SALESITOKIN@GMAIL.COM