

COLOR MEASUREMENT

CROSS HATCH ADHESION TESTER, STANDARD COLOR BOX, UV LAMP TESTER, VERTICAL ANTI-YELLOWING

เครื่องทดสอบเกี่ยวกับสี, แผ่นสำหรับทดสอบการยึดเกาะสี, ตู้เทียบสี, เครื่องทดสอบแสงUV, เครื่องเร่งจำลองแสง

แผ่นสำหรับทดสอบการยึดเกาะสี



MODEL: BGD 502



Cross Hatch Adhesion Tester

| Model | Cross Hatch Cutter | Spacing | Coating |
|-----------|--------------------|---------|------------|
| BGD 502/2 | 11 Blades | 1 mm | 0-60 µm |
| BGD 502/3 | 6 Blades | 1 mm | 0-60 µm |
| BGD 502/4 | 11 Blades | 2 mm | 60-120 µm |
| BGD 502/5 | 6 Blades | 2 mm | 60-120 µm |
| BGD 502/6 | 6 Blades | 3 mm | 120-250 µm |
| Price | 13,500.- | | |

Standard Colour Box

ตู้เทียบสี

MODEL: SP-60(4 Lights), SP-65 (5 Lights), SP-66(6 Lights), SP-120



Features

Microcomputer controlled. Quick and reliable Color assessment. Auto conversion between light sources. No warm-up; No flick; No heat emission. Elapsed Time displaying of each light source. Energy saving; Efficient illumination.



| Model | Equipment | Size(CM) | Cavity | Price |
|-------------------|--|-------------------|------------------|-----------------|
| SP-60 (4 Lights) | D65X2, TL84X2, UVX1, FX4 | 71W x 40.5D x 57H | 68W x 38D x 36H | 39,000.- |
| SP-65 (5 Lights) | D65X2, TL84X2, CWF2, UVX1, FX4 | 71W x 40.5D x 57H | 68W x 38D x 36H | 42,000.- |
| SP-66 (6 Lights) | D65X2, TL84X2, CWF2 TL83X2, UVX1, FX4 | 71W x 40.5D x 57H | 68W x 38D x 36H | 45,000.- |
| SP-120 (6 Lights) | D65X2, TL84X2, CWF2, TL83X2, UVX1, FX6 | 131W x 61D x 80H | 128W x 59D x 60H | 49,000.- |

UV LAMP TESTER



สอบถาม สายด่วน 082-1288881, 081-7731860
หรือ OFFICE 02-9744354-6

| Model | Z-UV |
|------------------------------------|--|
| Temperature range | RT+10°C~70°C |
| Humidity range | 90% RH~98% RH |
| Distance between lamp | 70±2 mm |
| Distance between Specimen and lamp | 50±2 mm |
| Lamps type | UV-A, 40W/UV-B, 40W |
| UV light wavelength | 315 ~ 400 nm / 280 ~ 315 nm |
| Standard test sheft | 75z 300 mm (3x12") / 23 or 100 x 300 mm (4x12") / 15 |
| Lamps amount | 8 Sets |
| Main unit dimension | 580W x 280D x 1450H mm |

Purpose:

Vertical anti-yellowing aging test machine placed in container to export, Due to effects of solar radiation and the colour of the shoes easy to change. Discoloration metersimulate the environment of sun radiation and thus determine the anti-yellowing capacity of material in the sunlight radiation. It is a good reference for making shoes and choosing the raw materials. General the testing time is three hours in this machine, it is equal to 3 months in container. The machine uses the German-made UV bulbs as lamp and control the inside temperature, provides more accurate and more detailed reference for industry.

PRICE: 185,000.-

VERTICAL ANTI-YELLOWING เครื่องเร่งจำลองแสง

| Model | SPHY-764A |
|--------------|-----------------------------------|
| Usage | Shoe Dielectric Resistance Tester |
| Light | Simulate Solar Radiation |
| Specimen pan | Rotation |
| Color | Sliver |
| Counter | LCD |
| Dimension | 68x31x41cm |



COLOR MEASUREMENT

MULTI-PURPOSE DRY FILM MEASURING INSTRUMENT, ROLLING WHEEL WET FILM,
PENCIL HARDNESS TESTER, RUB RESISTANCE TEST, LEATHER RUBBING COLOR FASTNESS TESTER

เครื่องทดสอบเกี่ยวกับสี, เครื่องวัดความหนาฟิล์มพลาสติก, เครื่องทดสอบการขีดข่วนของผิวสี, ลูกกลิ้งวัดความหนาแบบเปียก
เครื่องทดสอบการขีดข่วนสี, เครื่องทดสอบความทนทานการขีดข่วนหนัง



เครื่องวัดความหนาฟิล์มพลาสติก Multi-Purpose Dry Film Measuring Instrument P.I.G.

| | |
|-------------------|--|
| Thickness Cutting | No.1 Coating thickness between 20-2000um (0.8-70 mils) |
| | No.2 Coating thickness between 10-2000um (0.4-40 mils) |
| | No.3 Coating thickness between 2-200um (0.08-8 mils) |
| Special Cutters | Special Cutting A : Coating thickness between 0-100um (0-4 mils) |
| also available | Special Cutting B : Coating thickness between 0-300um (0-120 mils) |
| Microscope | X50 magnification |
| Price | 28,000.- |

Rolling Wheel Wet Film Thickness Gauges ลูกกลิ้งวัดความหนาแบบเปียก



| Main Technical Parameters | |
|---------------------------|---------------------------|
| Dimensions | 50 Φ × 15 H mm @ 2mm path |
| Weight | approx. 177g |
| Ordering Information | |
| BGD 532/1 | 0-100µm (@ 5µm) |
| BGD 532/2 | 0-200µm (@ 10µm) |
| BGD 532/3 | 0-500µm (@ 50µm) |
| BGD 532/4 | 0-1,000µm (@ 100µm) |
| Price | 8,500.- |

Pencil Hardness Tester

เครื่องทดสอบการขีดข่วนของผิวสี



ASTM D3363, ISO 15184, GB/T 6739

1 Set of Pencils 12 Pencil
-4B-3B-2B-B-HB-H-2H-3H-4H-5H-6H

| Specification | Price |
|---------------|-----------------------|
| BGD506-1 | 500g 14,500.- |
| BGD506-2 | 750g 14,500.- |
| BGD506-3 | 1000g 14,500.- |
| BGD506-4 | 765g 14,500.- |

Mitsubishi Pencil MODEL TC-3



Specification

1 SET of 17 Pencil

- 6B -5B -4B -2B -3B -B -HB -F -H
-2H -3H -4H -5H -6H -7H -8H -9H

Price 5,500.-

Leather Rubbing Color Fastness Tester

เครื่องทดสอบความทนทานการขีดข่วนหนัง

RUB RESISTANCE TEST

เครื่องทดสอบความทนทานการขีดข่วน

Electronic Crockmeter

Model YM-571

เครื่องทดสอบการขีดข่วนสิ่งพิมพ์
Will be placed in the friction slip of paper machine, pressure b clamp, with dry and wet rubbing cloth friction after staining or discoloration was evaluated with grey cloth or friction specimen sample card. Test for colour fastness to dry and wet friction of textile printing and dyeing



| Model | YM - 571 |
|-----------------|----------------------|
| Friction Type | Electronic |
| Friction range | □ 104 mm ± 3 mm □ |
| Friction rate | □ 60/ m □ |
| Friction forece | □ 9N □ |
| Friction probe | □ 16 mm round copper |



Price: 65,000.-

MODEL: SPHY-759



Price: 185,000.-

| MODEL | SPHY-759 |
|--------------------|--------------------------------|
| Specimen | 120x20mm |
| Wool flet | 15 x 15 mm |
| Counter | Six LCD liquid crystal display |
| Motor | AC micro-motor |
| Dimension | 30.5x43x47.5cm |
| Testing block size | 15x15mm |

COLORIMETER

เครื่องเปรียบเทียบสี



Put the instrument evenly on a flat object, and measure multiple spots for average.



Transparent baseboard test hole



White board

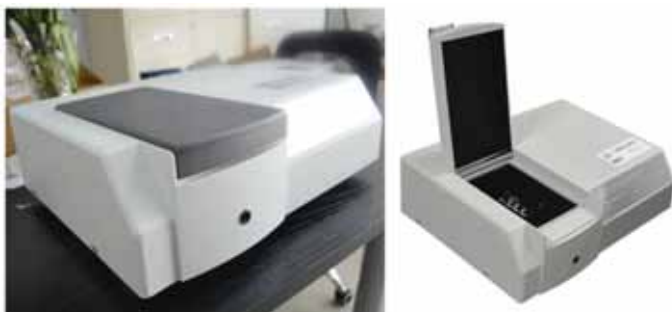


Hohlraum

CS10 The Colorimeter with lowest Price
 CS200 Price-Performance Ratio
 CS210 Camera for sample view
 CS220 Powder, colloids measuring
 CS260 The color reader

| Model | CS-10 | CS-200 | CS-210 | CS-220 | CS-260 |
|------------------------|--|-------------------------|--|----------------------------|------------------|
| Illumination system | 8/d (8°/diffused illumination), Specular component included (SCI) | | SCE | | SCI |
| Display modes | Colorimetric values: L x a x b, L x C x h, ΔE x ab, XYZ, relative RGB values: Color difference values: Δ(LxCxh): | | Colorimetric values: L x a x b, L x C x h, ΔE x ab, XYZ, relative RGB values: Color difference values: (L x a x b), Δ(L x C x h): Whiteness values : hunter whiteness, ganz whiteness Yellowness value: YI | | |
| Measuring Caliber | About 8 mm | | | | |
| Measuring Conditions | CIE 10° Standard Observer; CIE D65 Light Source | | | | |
| Measuring range | L x : 1-100VA | | | | |
| Repeatability | Standard Deviation within Δ Ex ab x , 0.1 (condition: measure the white calibration board 30 times for average) | | Standard Deviation within D Ex ab x , 0.8 (condition: measure the white calibration board 30 times for average) | | |
| Storage | 10 Sets of standard samples: up to 100 under each standard sample | | 100 Sets of standard samples: up to 100 under each standard sample | | |
| Measuring time | About 0.5 seconds | | | | |
| Measuring light source | LED | | | | |
| Power source | Four AA 1.5V Alkaline battery or nickel-metal hydride batteries; Exclusive DC5V adapter | | | | |
| port | USB 2.0 printer | | | | |
| weight | 550 g | | | | |
| Size | 77 x 86 x 210 mm T | | | | |
| Other function | The Colorimeter with lowest price | Price-Performance ratio | Camera for sample view | Powder, colloids Measuring | The color reader |
| Price | 39,000.- | 49,000.- | 55,000.- | 60,000.- | 65,000.- |

Tabletop Spectrophotometer CS-810



| Model | Tabletop Spectrophotometer CS-810 |
|----------------------------|---|
| Illumination | d/0 (Diffused lighting, 0 degrees observe angle) SCS optical engine (light splitting and integration system),(confirm to CIE No.15, ISO7724/1, ASTM E1164, DIN 5033 Teil7, JIS Z8722 Condition C Standards) |
| Size of integrating sphere | φ40 mm, Alvan diffused reflection surface coating |
| Illumination Light source | CLEDs (entire wavelength balanced LED light source) |
| Sensor | dual light path sensor array |
| Wavelength range | 400-700 nm |
| Wavelength interval | 10 nm |
| Half spectral width | 5 nm |
| Reflectivity range | 0-200% |
| Reflectivity Resolution | 0.01% |
| Observation angle | 2°/10° |
| Measurement light source | A,C,D50,D55,D65,D75,F1,F2,F3,F4,F5,F6,F7,F8,F9,F10,F11,F12,CWF,U30,DLF,NBF,TL83,TL84 |
| Price | 290,000.- |

SPECTROPHOTO METER เครื่องวัดเฉดสี

MODEL: CS-SERIES

เครื่องวัดเฉดสีผง



Spectrophotometer for Powder Coating Color Measurement

| Type | CS-580 | CS-600 | CS-610 | CS-650 | CS-660 |
|----------------------------|---|------------------|------------------|-----------------------------|------------------------------|
| Illumination | d/8(Diffused lighting, 8 degrees observe angle),SCI (specular reflection included) /SCE(specular reflection excluded) | | | | |
| Size of integrating sphere | φ40 mm .Alvan diffused reflection surface coating | | | | |
| Illumination Light source | CLEDs (entire wavelength balanced LED light source) | | | Halogen Lamp | CLEDs |
| Wavelength Range | 400 - 700 nm | | | 360 - 740 nm | 400 - 700 nm |
| Wavelength Interval | 10 nm | | | | |
| Half Spectral | 5 nm | | | | |
| Reflectivity Resolution | 0.0001 | | | | |
| Measurement light source | A,C,D50,D55,D65,D75,F1 - F12,DLF,TL83,TL84,NBF,U30,CWF | | | | |
| Repeatability | ΔE*ab<=0.03(After calibration, Standard deviation of 30 measurements on test white board, 5 second) | | | ΔE*ab <=0.02, Maximum: 0.04 | ΔE*ab<= 0.015, Maximum: 0.03 |
| Price | 139,000.- | 159,000.- | 179,000.- | 220,000.- | 290,000.- |

CS-820 Tabletop Spectrophotometer



Compatible for solid and liquid color measurement, has multiple measuring calibers High intensity pulse xenon light Dual light path spectral analysis technology Has both SCI and SCE measurement modes Extra large display screen for easier measurement and settings Supporting color management software Has both reflection and transmission measurement Adjustable UV light source Four measurement calibers, maximum is 25.4mm

| Specifications | Model CS-820 |
|----------------------------|--|
| Repeatability | ΔE*ab0.015, Maximum 0.03 |
| Inter-instrument agreement | ΔE*ab ≤0.2 (BCRA color charts II, average of 12 charts) |
| Spectral Range | 360 nm - 740 nm |
| Reflectivity range | 0% to 200% |
| Resolution | 0.0001 |
| Color difference formula | ΔE*ab, ΔE*CH, ΔE*uv, ΔE*cmc(2:1), ΔE*cmc(1:1), ΔE*00, eab(Hunter), 555, Color classification |
| Price | 650,000.- |

MODEL: NR-110



| Model | NR-110 |
|--------------------------------|--|
| Measurement End-face | Large stable end-face and small area concave-convex end face |
| Color space | CIEL *a*b*C*h* CIEL*a*b* |
| Color difference formula | Δ E*ab Δ L*a*b* Δ E*C*h* |
| Illuminating/ Viewing geometry | 8° /d |
| Measuring aperture | φ4mm |
| Light source | D65 |
| Repeatability | Standard deviation within Δ E*ab 0.08 Average of 30 measurements of standard white plate |
| Price | 59,000.- |



NH-SERIES

| Model | NH-300 | NH-310 |
|--------------------------------|---------------------------------|---|
| Illuminating/ Viewing geometry | 8/d | |
| Measuring aperture | φ8mm | φ8mm/φ4mm |
| Color space | CIEL *a*b*C*h* CIEL*a*b* CIEXYZ | CIEL *a*b*C*h* CIEL*a*b* CIEXYZ CIERGB CIEL *u*v* CIEL*C*h* Yellowness and whiteness fastness |
| Color difference formula | Δ E*ab Δ L*a*b* Δ E*C*h* | Δ E*ab Δ L*a*b* Δ E*C*h* ΔECIE94 Δehunter |
| Light source | D65 | D65 D50A |
| Price | 69,000.- | 89,000.- |

| Model | NS-800 |
|---------------------------------|--|
| Illumination/observation system | 45/0 method (45 ring-shaped illumination, vertical viewing), Comply with CIE No.15 , GB/T 3978 |
| Integrating sphere Size | Φ58mm |
| Light Source | combined LED sources |
| Sensor | Silicon photodiode array |
| Wavelength range / interval | 400~700nm / 10 nm |
| Reflectance range | 0~200% |
| Measuring Aperture | Φ8mm |
| Color Space | CIE LAB,XYZ,Yxy,LCh,CIE LUV |
| Color difference Formula | ΔE*ab,ΔE*uv,ΔE*94,ΔE*cmc(2:1),ΔE*cmc(1:1),ΔE*00 |
| Price | 115,000.- |

NS-800



MODEL:NR-200



| Model | NR-200 |
|--------------------------------|-----------------------------------|
| Measuring aperture | φ8mm |
| Illuminating/ Viewing geometry | 8/d |
| Color space | CIEL *a*b*C*h* CIEL*a*b* CIEXYZ |
| Color difference formula | Δ E*ab Δ L*a*b* Δ E*C*h* |
| Storage | 100pcs standards 20000pcs samples |
| Price | 49,000.- |

Melt Flow Tester, Automatic Keyboard, Digital Wire Torsion Tester

เครื่องทดสอบอัตราการหลอมไหล, เครื่องทดสอบคีย์บอร์ด, เครื่องทดสอบการบิดตัวโลหะ

Melt Flow Tester เครื่องทดสอบการหลอมไหล

SP-XRL400 SERIES



XNR-400D



New update

Rheological measurements
Multiweight Melt Index

| | |
|--------------------------------|---|
| Model | XNR-400 |
| Temperature working range | 120°C to 450 °C |
| Temperature accuracy | ± 0,1 °C |
| Piston displacement accuracy | 0,02 mm |
| Piston displacement resolution | 0,005 mm |
| weights | 0.325 / 1.2 / 2.16 / 3.8 / 5 / 10 / 21.6 Kg |
| Electric supply | 220 V – 50 Hz |
| Air supply | 0.8 to 1 Mpa |
| Dimensions | 400 x 260 x 720 mm (height) |

PRICE: 1,850,000.-



SP-XRL-400A



SP-XRL-400B



SP-XRL-400C/D

Melt flow rete / Melt volume rete

| Model | SP-XRL-400A | SP-XRL-400B | SP-XRL-400C | SP-XRL-400D |
|---------------------|------------------|-------------------|------------------|-------------------|
| Temperature Control | PID | | | |
| Cutting material | Auto | | | |
| Measuring | Auto | | | |
| Load/Unload | Manual | | Fast | |
| Result | LCD | LCD, Print Report | LCD | LCD, Print Report |
| Price | 165,000.- | 185,000.- | 225,000.- | 240,000.- |

AUTOMATIC KEY BOARD

เครื่องทดสอบแรงกดคีย์บอร์ด

| Model | Tec3D-01F | Tec3D-02F | Tec3D-05F |
|-------------------|--|------------|------------|
| Capacity | 10N/1kgf | 20N/ 2kgf | 50N/ 5kgf |
| Load resolution | 0.001N/ 0.1gf | 0.01N/ 1gf | 0.01N/ 1gf |
| Load accuracy | Within ± 0.5% of indicated value | | |
| Length resolution | Z-axis= 0.001 mm X-axis= 0.001 mm Y-axis= 0.001 mm | | |
| Disp. Accuracy | ± 20 µm + 0.0001 L (mm) | | |
| Test speed | 0.1 ~ 600 mm /min | | |
| X-Y axis | X = 100 mm (±50mm) Y=130 mm (±65 mm) | | |
| max speed | 6000 mm / min | | |
| Size | W382 x H580 x D365 | | |

TEC3D SERIES



New update

สอบถาม ส่วนตัว 082-1288881, 081-7731860 หรือ OFFICE 02-9744354-6

เครื่องทดสอบการบิดตัวโลหะ Digital Wire Torsion Tester



New update

| Model | NJS-5X |
|--------------------------------------|------------------|
| Test range | φ0.5~φ7 mm |
| Mobile guide full parallelism within | < 0.2 mm |
| Maximum distance of two chuck | 300 - 500 mm |
| Rotation Speed | 30, 60r/min |
| Jaw stiffness | 55 - 65 HRC |
| Weight tolerance | ±0.5% |
| Testing machine operating noise | <70 dB |
| Operating Voltage | AC 380V±10% 50Hz |

PRICE: 290,000.-

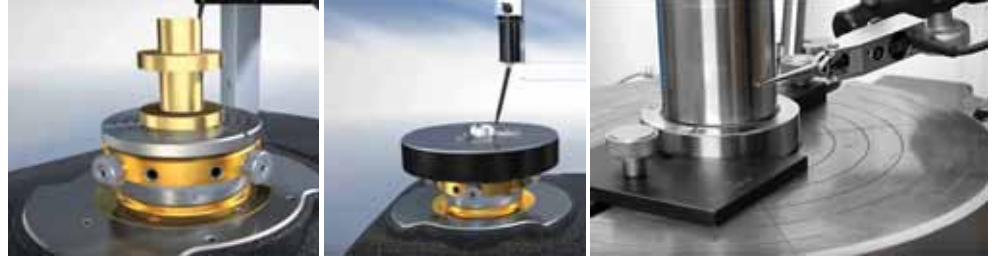
Roundness Cylindricity Measuring Machine, Sharp Edge Tester Salt Spray Tester, Camshaft Measurement

เครื่องทดสอบความกลม, เครื่องทดสอบความคม, เครื่องทดสอบไอเกลือ, เครื่องทดสอบเพลาลูกเบี้ยว

เครื่องทดสอบความกลม

Roundness - Cylindricity Measuring Machine

เครื่องทดสอบความกลม ของวัสดุ ที่ผลิตขึ้นเพื่อต้องการ ตรวจสอบ ความกลม หรือการเยื้องศูนย์ ต่าง ๆ



| Model | RC30H | RC60H | RC35 | RC65 |
|-------------------------------------|---|------------------------------------|------------------------------------|-----------------------------------|
| Radial Accuracy of spindle | $\pm(0.025 + 5H/10000) \mu\text{m}$ | $\pm(0.0125+5H/10000) \mu\text{m}$ | $\pm(0.035+5H/10000) \mu\text{m}$ | $\pm(0.020+3H/10000) \mu\text{m}$ |
| Axial Accuracy of spindle | $\pm(0.03+5x/10000) \mu\text{m}$ | $\pm(0.03+4/10000) \mu\text{m}$ | $\pm(0.03+6x/10000) \mu\text{m}$ | $\pm(0.02+4x/10000) \mu\text{m}$ |
| dia of work plate and load capacity | $\phi 150 \text{ mm}$ (Extendable) | | $\phi 220 \text{ mm}$ (Extendable) | |
| Load Capacity | 20 kg | | 40kg | |
| Measured Max. dia | 250 mm (Extendable) | | | |
| Price | สอบถามราคาได้ที่ สายด่วน 082-1288881, 081-7731860หรือ OFFICE 02-9744354-6 | | | |

Sharp Edge Tester

เครื่องทดสอบความคม, อุปกรณ์ทดสอบความคม



MODEL: SET-50

Materials that cannot be tested:

- Fabric and metallic string or thread
- Non-durable plastics such as forks and spoons
- Paper and paper products

Materials that can be tested:

- Metal
- Glass
- Some plastics



PRICE: 32,000.-

| Model | SPQ-150 | SPQ-250 | SPQ-750 | SPQ-1000 |
|----------------------|----------------------------------|----------------------|-----------------------|-----------------------|
| Test Room (WxLxH) | 600 x 450 x 400 mm | 900 x 600 x 450 mm | 1200 x 850 x 500 mm | 1600 x 1000 x 600 mm |
| Lite | 108 ml | 243 ml | 510 ml | 960 ml |
| Machine Size (WxLxH) | 1130 x 630 x 1070 mm | 1460 x 910 x 1280 mm | 2200 x 1200 x 1450 mm | 2600 x 1450 x 1600 mm |
| Lab temperature | NSS.ACSS 35°C 1 °C/CASS 50°C 1°C | | | |
| Humidity | 85% ~ 98% RH | | | |
| Temperature range | $\pm 0.5 \text{ }^\circ\text{C}$ | | | |
| Salt Spray Subside | 1.0~2.0 ml/ 80 cm 2/h | | | |
| Power Supply | AC220V 10A | AC220V 15A | AC220V 20A | AC220V 30A |
| Price | 160,000.- | 195,000.- | 270,000.- | 385,000.- |

SALT SPRAY TESTER

เครื่องทดสอบไอเกลือ



Camshaft Measurement

เครื่องทดสอบเพลาลูกเบี้ยว

เครื่องวัดเพลาลูกเบี้ยว, เครื่องทดสอบเพลาลูกเบี้ยว

| Model | 911 -36" | 911-60" / 90" | 911-24" |
|----------------|-----------------------|------------------|-----------------------|
| Part Length | 0~915 mm | 0~1524 / 2286 mm | 0~610 mm |
| Swing Diameter | $\phi 228 \text{ mm}$ | | $\phi 190 \text{ mm}$ |

สอบถาม สายด่วน 082-1288881, 081-7731860หรือ OFFICE 02-9744354-6

VIBRATION METER

เครื่องทดสอบการสั่นสะเทือน

New Update!!

MINI VIBRATION METER 3D



| | |
|------------------|--|
| Model | AV-160D |
| Vibration Sensor | 3-Axis Piezoelectric Accelerometer |
| Axial Vibration | Any One Axis of X,Y,Z or 3 Axes of Xyz |
| Accuracy | ±5%+2 Digits |
| Analogue Output | AC Output 0~2.0V Peak Full Scale (Load Resistance) |
| Power Supply | 4X1.5vaaa (Um-4) Battery |
| Price | 39,000.- |

The 3D Vibration Tester Applied to the periodic motion measurements to detect moving mechanical imbalances and misaligned. Designed for on-site measuring various mechanical vibration, for quality control, running time and prior equipment maintenance data. Selection of high-performance accelerometers to achieve accurate, replicable measurement It has a bearing condition measurement function



MODEL VM-6370

| | |
|-----------------|------------------------|
| Model | VM6370 |
| Display | 4 Digit LCD backlit |
| Velocity | 0.01-400.0 mis2 |
| Displacement | 0.001-4.000mm |
| Accueleration | 0.1-400.0m/s2 |
| Frequency range | 10Hz to 10kHz |
| Accuracy | 5% of reading+2 digits |
| | Max Hold |
| Price | 21,000.- |

VM6310



| | |
|----------|---------------------------------|
| MODEL | VM6310 |
| Velocity | 0.1 - 200 mm /s (10Hz to 1 KHz) |
| Accuracy | Less 5% |
| | Auto Power off |
| | Max Hold |
| Price | 14,000.- |

VM6320



| | |
|--------------|------------------|
| MODEL | VM6320 |
| Velocity | 0.1 - 200 mm2 /s |
| Accuracy | Less 5% |
| Acceleration | 0.1 - 200 mm / s |
| Displacement | 0.001 - 2.0 mm |
| | Auto Power off |
| | Max Hold |
| Price | 16,000.- |



AR63A

| | |
|--------------|---|
| MODEL | AR63A |
| Velocity | 0.1 - 1999.9 m/s |
| Acceleration | 0.1 - 199.9 m / s2 |
| Displacement | 0.001 - 1.999 mm |
| | Different vibration frequency selection |
| Price | 39,000.- |

MODEL:VIBCHECK



| | |
|------------------|---|
| Model | Vibcheck |
| Display | 3 1/2 digit LCD |
| Measuring Ranges | Vibration : Velocity 0-50mm/s True RMS Acceleration 0-20g Basic : Volts |
| Frequency Range | 10Hz-1kHz (velocity) 10Hz-10kHz (acceleration) |
| Accuracy | Vibration : +- 0.1mm/s (+-0.1g) Bias : 5% |
| Price | 49,000.- |

AR63B



| | |
|--------------|---|
| MODEL | AR63B |
| Velocity | 0.1 - 1999.9 m/s |
| Acceleration | 0.1 - 199.9 m / s2 |
| Displacement | 0.001 - 1.999 mm |
| LCD Display | 3.5 digits Display |
| | Different vibration frequency selection |
| | Environ Temperature display function |
| Price | 39,000.- |

| | |
|------------------|--|
| MODEL | STV300 |
| Range (Metric) | Acceleration 0.1~205.6 m /s (peak) |
| | Velocity 0.1~400.0 m/s (RMS) |
| | Displacement 0.001 ~ 9.0 mm/s (peak-peak) |
| Range (Imperial) | Acceleration 0.01~22.00m/s (peak) |
| | Velocity 0.01~15.75mm/s (RMS) |
| | Displacement 0.1~356.3mm (peak-peak) |
| Frequency range | Acceleration 10Hz~200Hz, 10Hz~500Hz 10Hz~1KHz, 10Hz~10KHz |
| | Velocity 10Hz~1KHz |
| | Displacement 10Hz~500Hz |
| resolution | 0.25Hz |
| Data memory | 100x80 pieces of data and 100 spectrums |
| Price | 49,000.- |

Portable Vibration
STV300



VIBRATION METER MODEL:MK-21

| | |
|-----------------|--|
| Model | MK-21 |
| Measuring Range | ACC : 0.0-20.0m/s2 (Lo) 0-200m/s2 (Hi) |
| | ACC : 0.0-20.0m/s2 (Lo) 0-200m/s2 (Hi) |
| | VEL : 0-200um (Lo) 0-19900um |
| Diagnostic Mode | Classes I, II, III and IV, for machine from less than 15KW |
| Linearity | <+/-2% F.S. of each range |
| Price | 89,000.- |

COMPACT VIBRATION GENERATOR

เครื่องสร้างการสั่นสะเทือน

VIBRATIONPEN



TV-200



TV-260

| Model | TV200 | TV260 |
|-----------------------|----------------------------------|--|
| Parameter | RMS of vibration velocity (mm/s) | Acceleration, Velocity, Displacement |
| Testing range | Velocity: 0.1mm/s~ 199.9mm/s | Acceleration:0.1m/s ² |
| | | Velocity: 0.1mm/s-199.9 mm/s(RMS) |
| | | Displacement: 0.001mm-1.999 mm (peak-peak) |
| Accuracy | ±5% ± 2digits | |
| Display | 3 1/2 digits LCD | |
| Operating temperature | 0°C ~ 40°C | |
| Humidity | <85% | |
| Price | 22,000.- | 25,000.- |

COMPACT VIBRATION

สินค้าใหม่



MODEL: 9514-AB/SD

Vibration generation that provides the flexibility to comply with various applications while its essential parts are standardized, the most suited configuration can be realized for various application such as heavy load, through hole, heat-proof, etc. And its greater flexibility makes it possible to comply with the examination of the rattle noise. Combining with various peripheral equipment can meet many requirement.

เครื่องสร้างสั่นสะเทือนสำหรับโปรดักส์ชิ้นงานขนาดเล็ก

| Model | 9514-AB/SD |
|---------------------------|------------|
| Exciting Force [N] (kgf) | 500 (51.0) |
| Frequency Range [Hz] | 5 to 5,000 |
| Maximum Acceleration (G) | 42.5 |
| Maximum Displacement [mm] | 25 |
| Maximum Payload [Kg] | 12 |
| Armature Mass [Kg] | 1.2 |

สอบถามสายด่วน 082-1288881, 081-7731860

สินค้าใหม่



F Series Vibration Testing System

The standard F series vibration testing system has been sold for over 40 years. This system can generate the exciting force from 1.3 kN to 60 kN over the board range of frequency and have high durability to perform various vibration tests.

| Model | | F-1K/15 | F-6K/30 | F-60K/60 |
|-------------------|------------------|----------|----------|----------|
| Sine | kno-p | 1.3 | 6 | 60 |
| Random | kNms | 1.3 | 6 | 60 |
| Shock | kNo-p | 2.6 | 15 | 150 |
| Frequency Range | Hz | to 5,000 | to 2,300 | to 2,500 |
| Max. Acceleration | m/s ² | 1000 | 706 | 882 |
| Max. Velocity | m/s ² | 1.4 | 1.8 | 1.3 |
| Max. Displacement | mmp-p | 15 | 30 | 60 |
| Max. payload | kg | 30 | 200 | 500 |

สอบถาม สายด่วน 082-1288881, 081-7731860 หรือ OFFICE 02-9744354-6

สินค้าใหม่!!

HD-A521-1



This Machine is used to test the anti-vibration capabilities of large pieces of furniture, household appliances, office furniture and other large objects, as well as the simulated transport vibration test of the packaged products, to assess the degree of vibration-resistance.

VIBRATION

TESTER

| Model | HD-A521-1 |
|-------------------------|--|
| Max. Test Load | 200 KG |
| Frequency Range | 50-300 cycles/ min adjustable |
| Amplitude Range | 25.4 mm P-P(1 inch) |
| Control Panel | Programmable Logic controller + Touch Screen |
| Test Duration | Timer to pre-set the test time up to 99.99 hours |
| Vibration Mode | reciprocating |
| Machine Size (LxWxH) | 1170 x 1372 x 1615 mm |
| Work table size (LxW) | 1800x1200 |
| Fence Height | 1200 mm |
| Price | 390,000.- |

GLOSS METER

เครื่องทดสอบความเงา

CS-SERIES **สินค้าใหม่**



| MODEL | CS-300 | CS-380 |
|---------------------|--|-------------------|
| Test Angle | 60° | 20°, 60°, 85° |
| Test light spot(mm) | 60° : 9*15 | 60° : 9*15 |
| Test range | 0-1000GU | 60° : 0-1000GU |
| | 85° : 0-160GU | 85° : 0-160GU |
| Repeatability | 100-2000GU:0.2%GU | 100-2000GU:0.2%GU |
| Accuracy | Conform to JIG 696 standard for class one gloss meters | |
| Price: | 49,000.- | 65,000.- |



สินค้าใหม่

GLOSS CHECKER
IG-SERIES



IG-320

IG-331

แบรนด์คุณภาพ จากญี่ปุ่น

| MODEL | IG-331 | IG-320 |
|-----------------|--|---|
| Optical system | 60° measurement: Incident angle 60° Reception angle 60° 20° measurement: Incident angle 20° Reception angle 20° | Incident angle 60° Reception angle 60° |
| Measuring area | 60° measurement: 3 x 6 mm oval 20° measurement: 3 x 4 mm oval | 12 mm x 6 mm oval |
| Measuring range | 0-100 | 0-100.0 |
| Display range | 0-199 (resolution: 1) | 0-199 (resolution: 0.1) |
| Reproducibility | ±5% F.S. ±1 digit | ±0.5% F.S. ±1 digit |
| Price: | 49,000.- | 69,000.- |

สินค้าขายดี



Price: 16,500.-



Price: 21,000.-

| MODEL | ETB-0686 |
|-----------------------|------------|
| Measure Range | 0-200 GU |
| Digital Display | LCD |
| Accuracy | ± 1.2 GU |
| Angle | 60 degree |
| Measuring Window size | 16 x 32 mm |

| MODEL | ETB-0833 |
|-----------------|-------------------|
| Measure Range | 0-200 GU |
| Digital Display | LCD |
| Accuracy | ± 1.2 GU |
| Angle | 20/ 60/ 85 degree |



Model: SMT-2100

Price: 39,000.-

| MODEL | STM-2100 |
|-----------------|-----------|
| Measure Range | 0-999 GU |
| Digital Display | LCD |
| Measuring Area | 20 X 10 |
| Angle | 60 degree |

Model: STM-1130, STM-1130B

| MODEL | STM-1130 | STM-1130B |
|----------------|-----------------|-----------------|
| Measure Range | 0-199.9 GU | 0- 999 GU |
| Deviation | ± 1.2 GU | ± 2 GU |
| Measuring Area | 2 X 4 mm | 2 X 4 mm |
| Angle | 60 degree | 60 degree |
| Price: | 42,000.- | 45,000.- |



Model: STM-1150
Price: 45,000.-



สำหรับชิ้นงานเล็ก

| MODEL | STM-1150 |
|----------------------------|-----------|
| Measure Range | 0-1000 GU |
| Deviation | ± 1.5 GU |
| Digital Display | LCD |
| Measuring Area | 9 X 11 mm |
| Memory | 1000 |
| Angle | 60 degree |
| Software with USB Included | |



สินค้าขายดี
Model: STM-1100
Price: 85,000.-



| MODEL | STM-1100 |
|----------------------------|-----------------------------|
| Measure Range | 0-199.9 / 200 -2000 GU |
| Digital Display | LCD |
| Deviation | ± 1.5 GU |
| Measuring Area | 9 X 10 / 9 X 19 / 5 X 39 mm |
| Angle | 20 /60 /58 degree |
| Software with USB included | |

SURFACE ROUNDNESS

เครื่องทดสอบความเรียบผิวแบบพกพา

New Update!
SRT-300



****Free Software Control**

Main feature

- Electromechanical integration design, small volume, light weight, easy to use;
- Using DSP chip to control and data processing, high speed, low power consumption;
- 128 x 64 LED dot matrix display, digital / graphic display; highlight no perspective;
- Intuitive and rich display information, can display all the parameters and graphics;
- Compatible with ISO, DIN, ANSI, JIS national standards;

| | |
|------------------------|---|
| Model | SRT-300 |
| Testing Parameters | Ra, Rz, Rq, Rt, Rp, Rv, R3z, R3y, RzJIS, Rsk, Rku, Rsm, Rmr, Rx |
| Measuring range (um) | Ra: 0.005 - 16.000 Rz: 0.02 - 160.00 |
| Sample length (mm) | 0.25, 0.80, 2.50 |
| Evaluation length (mm) | (1 - 5) L |
| Maximum drive stroke | 17.5 mm / 0.7 inch |
| Indication error | ±(7-10) % |
| Indication accuracy | 0.001 |
| Variability | < 6% |
| Data Storage | 100 groups |
| Price | 59,000.- |

New Update!
PRSR-110

Wireless On Mobile



| | |
|---------------------|---|
| Model | PRSR-110 |
| Roughness parameter | Ra, Rz, Rt, Rq |
| Tracing length | 6mm |
| Tracing speed | 1.0mm/sec |
| Cut-off lengths | 0.25mm/ 0.8mm/ 2.5mm |
| Evaluation length | 1.25mm/ 4.0mm/ 5.0mm |
| Measuring range | Ra, Rq: 0.05-10.0um Rz, Rt: 0.1-50um |
| Accuracy | 0.01um |
| Repeatability | <12% |
| Price | 39,000.- |

MODEL AR-132B



| | |
|------------------------------|---|
| Model | AR-132B |
| Measuring Range | Ra, Rq : 0.005 ~ 16.00 um / 0.020 ~ 629.9 uinch Rz, Rt : 0.020 ~ 160.0 um / 0.078 ~ 6299 uinch |
| Accuracy | Not more than ± 10% |
| Fluctuation of display value | Not more than 6% |
| Resolution | 0.001 um, 0.01 um, 0.1 um |
| Price | 45,000.- |

| | |
|----------------------|---|
| Model | TR200 |
| Roughness Parameters | Ra, Rz, Ry, Rq, Rt, Rq, Rmax, Rm, R3z, S, Sm, Sk, Tp |
| Measuring System | Metric um, Imperial uinch |
| Range | Ra, Rq: 0.01 - 40um Rz, Ry, Rp, Rt, R3z: 0.02 - 160 um Sm, S: 2 - 4000 um tp: 1 - 100% (%Ry) |
| Display Resolution | 0.001 um / 0.04 uinch |
| Display | LCD 128 x 64 dot-matrix, with backlight |
| Price | 85,000.- |



TR-200

MODEL AR-132C

| | |
|------------------------|--|
| Model | AR-132C |
| Measuring Range | Ra: 0.05 - 10.00 um / 1.000 - 400.0 uinch Rz: 0.020 - 100.0 um / 0.780 - 4000 uinch |
| Accuracy | Not more than ±15% |
| Fluctuation of Display | Not more than 10% |
| Resolution | 0.001 um > 100 um |
| Price | 32,000.- |



PTS-103 PTS-104

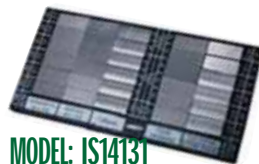
โมเดล PTS104 นั้นมี ช่องต่อที่สามารถเชื่อมต่อเข้ากับคอมพิวเตอร์ เพื่อปรับค่าได้อีกด้วย

| | | |
|-----------------|---|-----------------|
| Model | PTS103 | PTS104 |
| Measuring Range | Ra: 0.05um ~ 6.3um/1um" ~ 250um" Rz: 0.2um ~ 50.0um/8um" ~ 999um" Ry/Rmax: 0.2 um ~ 25 um/ 8um" ~ 999 um" | |
| Resolution | 0.01 um/1um" | |
| Display | 3 - digits LCD | |
| Price | 49,000.- | 55,000.- |



MODEL SRT-6210

| | |
|-----------------|--|
| Model | SRT-6210 |
| Display | 4 digits, 10 mm LCD, with blue backlight |
| Parameters | Ra, Rz, Rq, Rt |
| Measuring range | Ra, Rq 0.005 - 16.00um Rz, Rt 0.020 - 160.0um |
| Accuracy | ≤±10% |
| Repeatability | ≤6% |
| Resolution | 0.001 um ≥ 100 um |
| Price | 42,000.- |



MODEL: IS14131

แผ่นทดสอบความเรียบ

แผ่นตัวอย่างค่าความเรียบ คุณภาพสูง สำหรับตรวจสอบเทียบความเรียบผิว เพื่อเทียบดูความเรียบไมครอนแบบง่าย

| | | |
|--------------------------|--------------------------------------|----------------------------------|
| Model | IS14131 SURFACE ROUGHNESS COMPARATOR | |
| 2P cs flat lapping | 2.4 um" | 0.1, 0.05um |
| 4 pcs external grinding | 8, 16, 32, 63um" | 0.2, 0.4, 0.8, 1.6 um |
| 6 pcs plain grinding | 2, 4, 8, 16, 32, 63um" | 0.05, 0.1, 0.2, 0.4, 0.8, 1.6 um |
| 6 pcs horizontal milling | 16, 32, 63, 125, 250, 500um" | 0.4, 0.8, 1.6, 3.2, 6.3, 12.5um |
| 6 pcs vertical milling | 16, 32, 63, 125, 250, 500um" | 0.4, 0.8, 1.6, 3.2, 6.3, 12.5um |
| 6 pcs turning | 16, 32, 63, 125, 250, 500um" | 0.4, 0.8, 1.6, 3.2, 6.3, 12.5um |
| Price | 12,500.- | |

SURFACE ROUNDNESS TESTER

เครื่องทดสอบความเรียบผิวแบบตั้งโต๊ะ

High Precision Roughness Tester DR300



Price: 135,000.-

| | |
|--------------------------------|---|
| Model | DR300 |
| Measuring Rang Z-axis , X-axis | Z-axis 160 μm , X-axis 17.5 mm |
| Resolution Z-axis | 0.01 $\mu\text{m}/\pm 20 \mu\text{m}$ 0.02 $\mu\text{m}/\pm 40 \mu\text{m}$ 0.04 $\mu\text{m}/\pm 80 \mu\text{m}$ |
| Measuring Item Parameters | Ra Rz == Ry (JIS) Rq R1 == Rmax Rq Rv R3z R3y Rz (JIS) Rs Rsk Rku Rsm Rmr Rpc, Rk, Rpk, Rvk, Mrl, Mr2 |
| Filter | RC, PC-RC, Gauss, D-P |
| Dimension | 158 x 63.5 x 46 mm |

SURFACE ROUGHNESS TESTER MODEL: SRT-400C



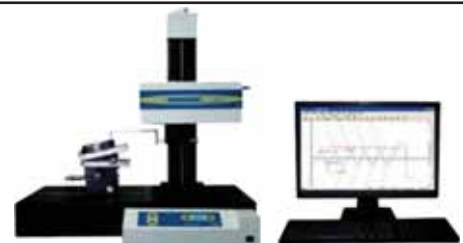
SRT-400C roughness tester is widely used in metrological departments of industries of autos, tools, bearings, patterns and optics for measuring roughness of precision parts. The drive box is equipped with a straight-line guide of high accuracy traveling up to 60mm. The displacement of the transducer moving along the guide collected with a precision grating system. The transducer is operated with eight keys on the control box or the buttons on the windows interface. It is used to measure the form and roughness of profiles of precision parts, in addition to roughness, by fitting least-square line of nominal form, a variety of form parameters can be measured, such as radius, angle, straightness, convexity, vertical and horizontal distance and distances between points, circle and slots. It is compliance with China Standard GB/T3505-2000, GB/T10610-1998 and ISO5436, ISO11562

| Specifications | Model : SRT-400C |
|-------------------------|---|
| Evaluation parameters | Ra, Rz, Rt, Rs, RSm, Rmax, Rp, Rq, D, Pt, Lr, Ln, RSK, RΔq, Δa, λq, λa, λa, R3t, Rt1, Rt2, Rt3, Rt4, Rt5, Rmr(Tp) chart |
| Roughness range | More than Ra 0.01-20um |
| Sampling length | L: 0.08, 0.25, 0.8, 2.5mm |
| Evaluation length | Ln : 1L, 2L, 3L, 4L, 5L or selectable |
| Sampling points | 10000 points |
| Resolution | 0.001 μm |
| Indication error | $\pm 5\%$ |
| Repetition error | $\pm 3\%$ |
| Max.specimen height | 300mm |
| Sensor, Applications | Planar, incline, cylinder, circular and spherical parts, grooves and bores |
| Probe type | standard type : height < 12mm, small hole : 5mm, probe D : 2um, force : 0.004N |
| X,Y image magnification | Auto mode |
| Price | 590,000.- |



SURFACE ROUGHNESS TESTER MODEL: SRT-2207

| Specifications | Model SRT-2207 |
|---------------------|---|
| Measuring principle | stylus contact method, inductive (vertical); linear scale (horizontal) |
| Measuring range | 400um (vertical), 100mm (horizontal) |
| resolution | 0.6nm (vertical), 7um (horizontal) |
| Cut-off length | 0.08, 0.25, 0.8, 2.5, 8mm |
| Assessment length | N x cut-off, N=1, 2, 3, 4, 5 |
| Filter type | Gaussian, 2RC, PC, un-filtered |
| Parameters | Ra, Rc, Rp, Rv, Rz, Rq, Rsm, Rt, Rsk, Rku, Rdq, Rmr, Wa, Wc, Wp, Wv, Wz, Wq, Wsm, Wt, Wsk, Wku, Wdq, Qmr, Pa, Pc, Pp, Pv, Pz, Pq, Psm, Pt, Psk, Pku, Pdq, Pmr |
| Price | 1,390,000.- |



Contour & Roughness Tester

| Specifications | Model SRT-500C |
|-----------------------|--|
| Measuring range | X:100mm, Z:10mm, X:120/150mm, Z:20mm |
| Measuring function | element; point, line, peak, valley, crossing point, center line |
| Sensor range | 10mm; 20mm (option) |
| Range-resolution rate | 65536:1 |
| Max.specimen height | X:100, Z:370mm X:120mm, Z:370mm (optional) |
| Probe type | Standard type : height < 12mm, small hole : 4mm, probe D : 2um, force : 0.004N, angle 60 |
| Resolution | 0.001 μm |
| parameters | Ra, Rz, Rt, Rs, RSm, Rmax, Rp, Rq, D, Rt, Lr, Ln, RSK, RΔq, Δa, λq, λa, R3, R3t, Rt, Rt2, Rt3, Rt4, R15, Rmr (Tp) chart. |
| Price | 850,000.- |

THICKNESS METER

เครื่องวัดความหนาโลหะ



PosiTector UTG SERIES



สินค้าใหม่

| PosiTector UTG | Corrosion | | Multiple Echo | |
|-----------------------|---------------------------------------|-----------------|---------------------------------------|------------------|
| | | | | |
| Order Code | UTG C1 | UTG C3 | UTG M1 | UTG M3 |
| Included Body | Standard | Advanced | Standard | Advanced |
| Included Probe | UTG C | | UTG M | |
| Probe Type | 5 MHz Dual Element | | 5 MHz Contact | |
| Thru-Paint Capability | no | | yes | |
| Range Single Echo | 0.040" to 5.000" 1.00 to 125.00 mm | | 0.100" to 5.000" 2.50 to 125.00 mm | |
| Range Multiple Echo | NA | | 0.100" to 2.500" 2.50 to 60.00 mm | |
| Resolution | 0.001" 0.01 mm | | 0.001" 0.01 mm | |
| Accuracy | ±0.001" ±0.03 mm | | ±0.001" ±0.03 mm | |
| Price | 59,000.- | 79,000.- | 85,000.- | 110,000.- |

สินค้าขายดี



TM 210 Plus

| | |
|----------|--------------------|
| MODEL | TM 210 PLUS |
| Display | 128X64 LCD |
| Range | 0.75 mm ~ 300.0 mm |
| Accuracy | ±(0.5% +0.02 mm) |
| Memory | 500 |
| Price | 18,500.- |



TM 8818

| | |
|------------|----------------------|
| MODEL | TM8818 |
| Display | 4 Digit LCD |
| Range | 0.9~400mm (45#steel) |
| Accuracy | ±(0.5%+0.1) |
| Resolution | 0.01/0.1mm |
| Price | 19,000.- |

High-Precision

| | |
|------------|---|
| MODEL | High-Precision |
| range | 1.5mm to 18mm; 0.059in-0.709in in I-E mode 0.25mm to 10mm; 0.012in-0.394in in E-E mode |
| resolution | H < 0.4in : 0.0001in/ 0.001in/ 0.01in or 0.001mm/0.01mm/0.1mm H ≥ 0.4in : 0.001in/ 0.01in or 0.01mm/0.1mm |
| Display | 128x64 dot-matrix LCD screen |
| Price | 59,000.- |



TM 230D
TM 250D

| MODEL | TM230D | TM250D |
|--------------|---------------------------------------|---------------------------------------|
| RANGE | 0.8mm – 250mm Depending of the probes | 3mm – 18mm Depnding of the probes |
| DISPLAY | 0.1mm or 0.01inch | 0.1mm/0.01mm or 0.01inch/0.001inch |
| TOLERANCE | ± 0.1mm in steel | ±0.025mm in steel |
| VELOCITY | 1000-9999 m/s (0.0393-0.3936 inch/μs) | |
| DISPLAY TYPE | 4 digital LCD with advanced backlight | |
| MEMORY | 500 Test Values | |
| POWER | 2 pcs. 1.5v AA Batteries | |
| OUTSIDE | 149mmx73mmx32mm | |
| PRICE | 35,000.- | 39,000.- |

| | |
|------------------------|--|
| MODEL | TG110-DL |
| Dimensions (W x H x D) | 3.00in. x 4.90in. x 1.25in. (76mm x 99mm x 32mm) |
| Display | 128 x 64 pixels, 1.96in. x 1.25in. (50mm x 32mm) |
| Resolution | 0.001in. (0.025mm) |
| Memory | 50,000 readings, 30 character |
| Price | 65,000.- |



TG110-DL



TI-N SERIES

Made in USA

| MODEL | TI-45N | TI-45NB | TI-45NC |
|------------|---|---------------|---------------|
| Range | 1.00~199.99 mm | 0.40~15.00 mm | 0.50~19.00 mm |
| Tolerance | ±0.05 mm or ±0.2%rdg | ±0.05 mm | ±0.03 mm |
| Probe | φ13.0 mm | φ13.0 mm | φ7.5 mm |
| Display | 4 2/1 - digit LCD Display, High with push button illumination | | |
| Resolution | 0.01 mm | | |
| Price | 55,000.- | สอบถาม | สอบถาม |



Made in Japan



ULTRASONIC TESTBLOCK, WALL THICKNESS

ก้อนแคลริเบทสำหรับเครื่องทดสอบความหนาโลหะ, เครื่องวัดความหนาขด

ก้อนสอบเทียบสำหรับเครื่องทดสอบความหนาชิ้นงาน



| | |
|-------------|--------------------------|
| MODEL | S-5 PIPE MM |
| Description | MM,1018 steel |
| 5step pipe | 2.5mm/5mm/10mm/15mm/20mm |
| | length:100mm |
| Price | 9,000.- |



| | |
|-------------|--|
| MODEL | S-10 MM-1 |
| Description | MM,1018 steel |
| 10step | 1mm/2mm/3mm/4mm/5mm/6mm/7mm/8mm/9mm/10mm |
| | Size:200 X 20mm |
| Price | 9,500.- |



| | |
|-------------|-------------------------------|
| MODEL | S-6 MM-2 |
| Description | MM,1018 steel |
| 4step | 2.5mm/5mm/10mm/15mm/20mm/25mm |
| | Size:120x20mm |
| Price | 8,500.- |



| | |
|-------------|----------------------------|
| MODEL | S-6 MM-1 |
| Description | MM,1018 steel |
| 6step | 1mm/3mm/5mm/10mm/15mm/20mm |
| | Size:120x20mm |
| Price | 9,500.- |

| | |
|-------------|--------------------------------|
| MODEL | S-5 INCH |
| Description | MM,1018 steel |
| 5step | 0.100"0.200"0.300"0.400"0.500" |
| | Size:4" X 0.8" |
| Price | 8,500.- |

| | |
|-------------|-------------------------|
| MODEL | S-5 MM |
| Description | MM,1018 steel |
| 5step | 5mm/10mm/15mm/20mm/25mm |
| | Size: 100X20mm |
| Price | 8,500.- |

| | |
|-------------|-------------------|
| MODEL | S-4 MM |
| Description | MM, 1018 steel |
| 4step | 3mm/5mm/10mm/15mm |
| | Size:80 X 20mm |
| Price | 8,000.- |



MODEL : V2 **Price: 9,500.-**

Description

- V2 TEST BLOCK STEEL
- THICKNESS: 20mm / 25mm
- STAINLESS STEEL 20mm / 25mm
- INCLUDED MAKER CERTIFICATION AND ABS PLASTIC CASE
- MATERIAL AVAILABLE FOR ALUMINUM 25mm



| | |
|-------------|--------------------------|
| MODEL | S-4 INCH-2 |
| Description | INCH,1018 steel |
| 4step | 0.250"0.500"0.750"1.000" |
| | Size:3.15" X 0.8" |
| Price | 8,000.- |

| | |
|-------------|--------------------------|
| MODEL | S-4 INCH-1 |
| Description | INCH,1018 steel |
| 4step | 0.100"0.200"0.400"0.600" |
| | Size:3.15" X 0.7" |
| Price | 8,000.- |

Wall Thickness

เครื่องวัดความหนาขด



Free Software

| | | |
|-------------|---------------------------|----------------------------|
| MODEL | FH-7200-4 | FH-7200-10 |
| Range | 0-1.5 mm with 1.5 mm Ball | 0-2.5 mm with 2.5 mm Ball |
| | 0-2.5 mm with 2.5 mm Ball | 0-4.0 mm with 4.0 mm Ball |
| | 0-4.0 mm with 4.0 mm Ball | 0-10.0 mm with 6.0 mm Ball |
| Data Memory | 100000 Values | 100000 Values |
| Interfaces | Irda 1.0 | Irda 1.0 |
| | Free Software | |
| Price | 290,000.- | 320,000.- |

TORQUE TESTER

เครื่องวัดอัตราแรงบิด

Electronic Torque Wrench

FREE: Calibration Certificate of USA



| DTW-SERIES | DTW-265I | DTW-1200I | DTW-100F | DTW-250F | DTW-625F |
|------------|-------------------|-------------------|-----------------|-----------------|-------------------|
| Range | 26.5 - 265 lbf-in | 120 - 1195 lbf-in | 10 - 100 lbf-ft | 25 - 250 lbf-ft | 62.5 - 625 lbf-ft |
| Drive | 1/4" | 3/8" | 1/2" | 1/2" | 3/4" |
| Price | 18,500.- | 18,500.- | 18,500.- | 18,500.- | 39,000.- |



TSD-SERIES

| Model | TSD-50 | TSD-400 |
|-----------------|---|---|
| Measuring Range | 0.45 - 4.50 lb-in 5.0 - 50.0 cN-M 0.50 - 5.00 kg-cm | 3.50 - 35.00 lb-in 40.0 - 400.0 cN-M 4.00 - 40.00 kg-cm |
| Resolution | 0.01 lb-in 0.1 cN-M 0.01 kg-cm | 0.01 lb-in 0.1 cN-M 0.01 kg-cm |
| Price | 23,500.- | 23,500.- |

FREE: Calibration Certificate of USA

TTQC-SERIES

FREE: Calibration Certificate NIST Traceable Calibration with data

Features

Bidirectional accuracy of $\pm 1\%$ of indicated reading

Eight (8) selectable engineering units: Oz.in., Lb.in., Lb.ft., Nm, cNm, KgCm, gfCm, Kgfm

3 modes of operation: Track, Peak and 1st Peak

Rugged Aluminum Housing

NiMH rechargeable batteries provide 8-10 hours continuous use

Includes NIST-Traceable Calibration Certificate

| Model | Range | Drive Size | Run-Down Fixture | Price |
|-----------------|-------------------|------------|------------------|-----------------|
| TT-QC-100z-1/4 | 10 - 100 ozf-in | 1/4" | Included | 59,000.- |
| TT-QC-200z-1/4 | 20 - 200 ozf-in | 1/4" | Included | 59,000.- |
| TT-QC-10i-1/4 | 1 - 10 lbf-in | 1/4" | Included | 59,000.- |
| TT-QC-25i-1/4 | 2.5 - 25 lbf-in | 1/4" | Included | 59,000.- |
| TT-QC-50i-1/4 | 5 - 50 lbf-in | 1/4" | Included | 59,000.- |
| TT-QC-100i-1/4 | 10 - 100 lbf-in | 1/4" | Included | 59,000.- |
| TT-QC-150i-1/4 | 15 - 150 lbf-in | 1/4" | Included | 59,000.- |
| TT-QC-250i-3/8 | 25 - 250 lbf-in | 3/8" | Included | 59,000.- |
| TT-QC-500i-3/8 | 50 - 500 lbf-in | 3/8" | Included | 59,000.- |
| TT-QC-750i-3/8 | 75 - 750 lbf-in | 3/8" | Included | 65,000.- |
| TT-QC-1000i-3/8 | 100 - 1000 lbf-in | 3/8" | Included | 65,000.- |
| TT-QC-100f-1/2 | 10 - 100 lbf-ft | 1/2" | Optional | 65,000.- |
| TT-QC-150f-1/2 | 15 - 150 lbf-ft | 1/2" | Optional | 65,000.- |
| TT-QC-250f-1/2 | 25 - 250 lbf-ft | 1/2" | Optional | 65,000.- |
| TT-QC-500f-3/4 | 50 - 500 lbf-ft | 3/4" | Optional | 65,000.- |
| TT-QC-750f-3/4 | 75 - 750 lbf-ft | 3/4" | Optional | 65,000.- |



TORQUE METER

เครื่องทดสอบแรงบิดฟาสต

| Model | FMT-5 | FMT-50 | FMT-220 | FMT-550 | FMT-2200 |
|------------------------------------|--------------------------------------|------------|------------|------------|------------|
| Accuracy | CW/CCW $\pm 0.5\%$ or ± 3 Digits | | | | |
| Socket Intuition Affinity (Female) | 1/4" | 3/8" | 1/2" | 3/4" | 1" |
| Max. Torque | 5 Nm | 50 Nm | 220 Nm | 550 Nm | 2200 Nm |
| Torque Measuring Range | 0.05-5.000 | 0.5-50.000 | 2.2-220.00 | 5.5-550.00 | 22-2200.0 |
| Operation Mode | Peak Hold/ Track | | | | |
| Unit Selection | N-m, in-ib, ft-ib, kg-cm | | | | N-m, ft-ib |
| Data Memory | 50 | 50 | 50 | 50 | 50 |
| Operation Temperature | 10°C - 60°C | | | | |
| Storage Temperature | 20°C - 70°C | | | | |
| Ulite Test | 10000 time | | | | |
| PC Connectivity | USB Cable Supported | | | | |



FMT SERIES

ติดต่อสอบถาม สายด่วน 082-1288881, 081-7731860 หรือ OFFICE 02-9744354-6

| Model | TNP-2 | TNP-5 | TNP-10 |
|--|---|--|-------------|
| Measuring units | Nm, Ncm, Kgcm, Lbln | | |
| Measuring Range | 0-2.000 Nm | 0-5.00 Nm | 0.10.00 Nm |
| | 0-200.0 Ncm | 0-500.0 Ncm | 0-1000 Ncm |
| | 0-20.39 Kgcm | 0-50.99 Kgcm | 0-1020 Kgcm |
| | 0-17.70 Lbln | 0-44.25 Lbln | 0.885 Lbln |
| Overload Protection/ Percentage overload | Yes/150% | | |
| Sample diameter range | ϕ 10-190 mm (0.39" - 7.48") | | |
| Overload Display | Display "OVR" at sub Display of LCD, blinking LED | | |
| Display | Main | 4-Digit LCD Display Character Height 12 mm | |
| | Sub | 3-Digit Display Character Height 7 mm | |
| | Comparator | HI, GO, LO, LED | |
| Accuracy | $\pm 0.5\%$ F.S. | | |
| Price | 69,000.- | 69,000.- | 69,000.- |

TNP-SERIES

USB interface



| Model | DTX2-15B | DTX2-40B | DTX2-85 |
|-----------------|--------------------|---------------------|---------------------------|
| Capacity Ldf-in | 15 (0.01 Ldf-in) | 40 (0.1 Ldf-in) | 85 (0.1 Ldf-in) |
| Capacity Kgf-cm | 20.00 (0.1 Kgf-cm) | 50.00 (0.01 Kgf-cm) | 100.0 Kgf-cm (0.1 Kgf-cm) |
| Capacity N-cm | 200.0 (0.1N-cm) | 500.0 (0.1N-cm) | 1000 N-cm (1N-cm) |
| Accuracy | $\pm 5\%$ | | |
| Memory | 1000 | | |
| Price | 79,000.- | 79,000.- | 79,000.- |



DTX2-SERIES

DB-SERIES

Calibration Certificate of GERMANY

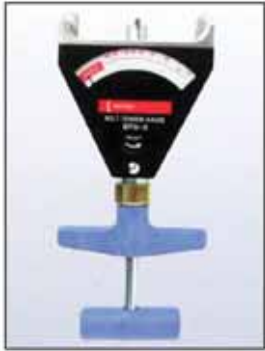
| Model | DB-1 | DB-2 | DB-5 | DB-10 | DB-20 |
|-------------------|-------------|-----------|-----------|-----------|----------|
| Measurement Range | 1.0000 N.m | 2.000 N.m | 5.00 N.m | 10.00 N.m | 20.0 N.m |
| Division | 0.0005 Nm | 0.001 N.m | 0.002 N.m | 0.05 N.m | 0.1 N.m |
| Net Weight | 12 Kg | | | | |
| Gross Weight | 15 Kg | | | | |
| Accuracy | $\pm 0.5\%$ | | | | |
| Memory | 1000 Values | | | | |
| Price | 59,000.- | 59,000.- | 59,000.- | 59,000.- | 59,000.- |



BELT TENSION

เครื่องทดสอบแรงตึงของสายพาน

เครื่องทดสอบแรงตึงสายพาน BELT TENSION GAUGE BTG-2



**NEW
UPDATE**

| | | |
|------------------|-----------------|---------------------|
| Model | BTG-2 | |
| Part Number | 95506-00091 | |
| Applicable Belts | V Belts | Especially M, A, B |
| | V Ribbed Belts | 3 rib, 4 rib, 5 rib |
| Price | 35,000.- | |

BELT TENSION METER (DUCATI)

MODEL BTM-TTC



| | |
|------------|-----------------|
| Model | BTM-TTC |
| Units | Hz (Frequency) |
| Display | Backlit LCD |
| Resolution | 3 Hz |
| Accuracy | 1.5 Hz |
| Price | 43,000.- |

Contact/ Non-Contact Tachometers

CDT-2000HD

| | |
|-------------|-----------------|
| Model | CDT-2000HD |
| Non-Contact | 1-99999 |
| Contact | 1-99999 |
| Accuracy | 0.02% |
| Resolution | 0.01 RPM |
| Price | 25,000.- |

Calibration Certificate of USA
Made in Germany



BTM-400

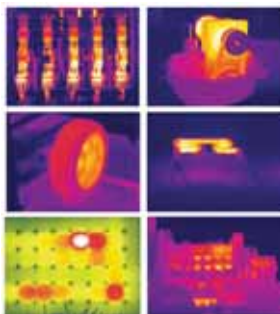


| | |
|-----------------------|---------------------|
| Model | BTM-400 Plus |
| Units | N. Lb, Hz |
| Measuring Range | 10-400 Hz, Standard |
| | 3-800 Hz, Optional |
| Free span length, Max | 30ft (10m) |
| Belt Density, Max | 10 kg/m |
| Price | 45,000.- |

THERMAL IMAGING CAMERA เครื่องทดสอบอุณหภูมิความร้อน

Product Description

- 2-Meter drop resistance
- 1.3 million pexel ccd image
- Variouxs temperatur Measurement functions
- JPEG Storage with Voice Annotation
- High cost-effective



| Item | SP-3 | SP-7 | |
|----------------|--|--|--------------|
| Detector | Detector Type Uncooled FPA microbolometer | | |
| Charateristics | Array Size/Format | 160x120 384x288 | |
| | Field of view/min focus distance | 250x190/0.1 m | |
| Image Manage | Spatial Resolutions (IFOV) | 2.72 mrad 1.36 mrad | |
| | Thermal Sensitivity | ≤0.06° C@30°C ≤0.05°C@30°C | |
| | Frame Rate | 50/60 Hz | |
| | Focus | Manual | |
| | Spectral Range | 8-14 μm | |
| | Built-in Visible Light | Yes | |
| Image Display | LCD Display | 2.7" TFT Color LCD, 640x480 | |
| | Image adjustment | Auto/manual gain and brightness | |
| Measurement | Temperature Range | -20°C~+350°C (can expand to 650 C) | -20°C~+650°C |
| | Accuracy | ±2 C or ±2% of reading, whichever is greater | |
| | Measurement Correction | Automatic /manual | |
| | Measurement Mode | Up to 4 movable spots. Up to 3 movable areas (maximum, minimum and average temperature). Up to 3 movable lines. Line profile. Isotherms. Temperature difference. Alarm (voice,color) | |
| Image Storage | Storage Card | 2G SD card, max 16 | |
| Price | 95,000.- | 210,000.- | |

DUROMETER, TABLET HARDNESS TESTER

เครื่องวัดความแข็งยางและพลาสติก, เครื่องวัดความแข็งเม็ดยา

Durometer แบบเข็ม



Shore A

Price : 6,500.-

Shore C

Price : 7,500.-

Shore D

Price : 8,500.-

Specification

- High Resolution
- Test Range : 0-100
- Available test range: 10-90 HA, HC, HD
- Dimension: 115x60x25 mm
- Stroke: 2.5 mm

Digital Durometer แบบดิจิทัล



Shore A

Price: 13,500.-



Shore C

Price: 13,500.-



Shore D

Price: 13,500.-

Specification

- High Resolution
- Test Range : 0-100 HA, HC, HD
- Available test range: 10-90 HA, HC, HD
- Dimension: 115x60x25 mm
- Stroke: 2.5 mm
- Tip Dimension: 0.79 mm

Tablet Hardness Tester

เครื่องทดสอบความแข็งเม็ดยา



Price: 49,000.-

MODEL : YD-1

Technical Parameters

- Hardness range : (2-199.9) N
- Hardness accuracy : Max. *(±0.05%)
- Moving distance of probe : 20mm
- Power : 220V/50Hz/10W or 110V/60Hz/10W



Price: 89,000.-

MODEL: YD-2

Technical Parameters

- Hardness range : (2-199.9) N
- Hardness accuracy : Max. *(±0.05%)
- Moving distance of probe : 3-40mm
- Test period : >20 S/P
- Max number in each group 100P
- Power : 220V/50Hz/60W or 110V/60Hz/10W



Price: 69,000.-

MODEL: YD-3

Technical Parameters

- Hardness range : (2-199.9) N
- Hardness accuracy : Max. *(±0.05%)
- Moving distance of probe : 3-40mm
- Max number in each group 100P
- Power : 220V/50Hz/10W or 110V/60Hz/60W

Descriptions

- Corporate standard (Tablet hardness tester) Q/12XQ0186-2005



Specification

- Match to SHORE A and C durometer
- Manual operation easy and stable to operate
- Dimension: 100*212*250 mm

** ราคาเฉพาะ Stand
Price: 19,500.-



Specification

- Match to SHORE D durometer
- Height adjustment : 0-200 mm
- Clearance : 0-300 mm (Standard)
- Dimension: 100*212*250 mm

** ราคาเฉพาะ Stand
Price: 22,500.-

Durometer Test Stand

FRUIT PENETRO METER

เครื่องวัดความแข็งผลไม้



Fruit Penetrometer

- Test soft fruit, Please use GY-2, such as banana, strawberry
- If you want to test apple, pear, please use GY-1,
- And if test hard fruit, please use GY-3, such as hard apple, cantaloupe

| Model | GY-1 | GY-2 | GY-3 | |
|---------------|----------------|-----------------|------------------|--------------|
| Range | 2 - 15 kg /cm2 | 0.5 - 4 kg /cm2 | 0.5 - 12 kg /cm2 | 1-24 kg /cm2 |
| Head Diameter | 3.5 mm | 3.5 mm | 8 mm | 11 mm |
| Resolution | 0.1 | 0.02 | 0.1 | 0.2 |
| Stoke | 10 mm | | | |
| Dimension | 140 x 60 x 30 | | | |
| Weight | 0.5 kg | | | |
| Price | 9,000.- | 9,000.- | 9,000.- | 9,000.- |

Digital Fruit Penetrometer



| Model | GY-4 |
|-----------------------|---|
| Load limit | 20 kgs |
| Load Resolution | 0.01 kg |
| Accuracy | 0.50% |
| Unit | N, kg, lb |
| Interface | RS-232-USB |
| Power Supply | Input 110 - 240 V 50-60 Hz 200mA Output- 4V 500 mA |
| High Precision sensor | |
| Working | 5 C -35 C |
| Transpoting | 15% - 80% RH |
| Dimension | L245 mm "W55 mm" |
| Price | 19,500.- |

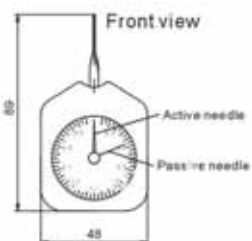


GYT-Stand for Fruit Penetrometer

ใช้สำหรับ ยึดติดกับ เครื่องวัดความแข็งผลไม้ ได้ทั้งแบบ Digital และ แบบเข็ม เพื่อให้ มีความเที่ยงตรง มากยิ่งขึ้นแทน สำหรับ เครื่องวัดความแข็งผลไม้, เครื่องทดสอบความแข็งของผลไม้ เพื่อดูตรวจสอบคุณภาพ ความสุกงอม ของผลไม้

สอบถามราคาได้ที่

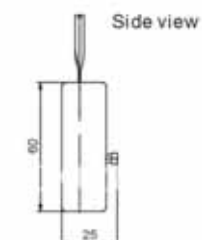
สายด่วน 082-1288881, 081-7731860 หรือ OFFICE 02-9744354-6



TENSION GAUGE MODEL HTD SERIES

Our range of Dial tension meter (gram gauge) provide a simple, quick and easy way of measuring force from 2 to 500 gram force. It measures in both directions clockwss and counter clockwise. Available in four size : HTD, HTD, HTD-Z, HTD-Z. Available with flat or round tips and with N or g unit.

| Model | HTD-10 | HTD-30 | HTD-50 | HTD-100 | HTD-150 | HTD-300 | HTD-500 |
|--------------|-------------------|------------|----------------|-----------------|-----------------|-----------------|-------------------|
| Capacity | 10 g | 30 g | 50 g | 100 g | 150 g | 300 g | 500 g |
| Resolution | 0.2 g | 0.5 g | 1 g | 2 g | 2.5 g | 5 g | 10 g |
| Calibration | 2 - 10 - 2 g | 6 - 30 6 g | 10 - 50 - 10 g | 20 - 100 - 20 g | 30 - 150 - 30 g | 60 - 300 - 60 g | 100 - 500 - 100 g |
| Net weight | 65 g | | | | | | |
| Gross weight | 140 g | | | | | | |
| Accuracy | ± % of full scale | | | | | | |
| Price | 6,500.- | | | | | | |



WEB STER / BARCOL IMPRESSOR

เครื่องวัดความแข็งอลูมิเนียมแบบพกพาและเครื่องวัดความแข็งอลูมิเนียมแบบจอสถแสดงผลดิจิทัล

เครื่องวัดความแข็งอลูมิเนียม แบบพกพา

Webster W Series



Model: W20



Model: W20 A



Model: W20 B

| Model | W-20 | W-20 A | W-20 B | W-B 75 | W-B 75D | W-BB 75 | W-B 75 B | W-B 92 |
|-------------------|--------------------|----------------|---------------|---------------|---------------|---------------|---------------|---|
| Application Range | Aluminum alloy | | | Brass | | Copper | | Stainless Steel trips, Thin cold-rolled Steel trips |
| Hardness Range | 25 110HRE 58 131HV | | | 63 105HRF | | 18 100HRE | | 50 92HRB |
| Specimen | 0.4 - 6 inner | 0.4 - 13 inner | 0.4 - 8 inner | 0.4 - 6 inner | 0.4 - 8 inner | 0.4 - 6 inner | 0.4 - 8 inner | 0.4 - 6 inner |
| Dimension (mm) | > 10 | > 10 | > 6 | > 10 | > 6 | > 10 | > 6 | > 10 |
| Price | 39,000.- | 45,000.- | 45,000.- | 43,000.- | 48,000.- | 48,000.- | 48,000.- | 43,000.- |

เครื่องวัดความแข็งอลูมิเนียมแบบจอสถแสดงผลดิจิทัล

Digital Display Barcol Impressor



MODEL: HM-934-1



HM-934-1 PLUS

| Model | HM-934-1 | HM-934-1 PLUS |
|---------------------|-----------------------------------|---------------|
| Range | 0 ~ 100Hba, Amount to 25~ 135 HBW | |
| Resolution | 0.1 Hba | |
| Indication Error | 81~88Hba ±1 Hba | |
| | 42~48 Hba ±2 Hba | |
| Repeatability Error | 81~88 Hba ± 1.5 Hba | |
| | 42~48 Hba ±2.5 Hba | |
| Operating Condition | Temperature: 0.50°C | |
| | Humidity: <80% RH | |
| Brinell Hardness | | Yes |
| Vickers Hardness | | Yes |
| Rockwell Hardness | | Yes |
| Price | 25,000.- | 29,000.- |

Standard Accessories :

- Main Unit
- 2 Pins
- 2 Standard Blocks
- Pin Length Calibration Block
- Screw Driver
- Spanner
- Carrying Case
- Operation Manual

Applications:

- Aluminum
- Aluminum Alloys
- Soft Metals
- Composite Materials
- Glass Steel

Optional Accessories:

- Bluetooth data out put with software

PORTABLE HARDNESS TESTER

เครื่องทดสอบความแข็งโลหะ, อลูมิเนียม, ทองเหลือง ชนิดพกพา

THL 280 PLUS



สินค้าใหม่



Support
Price: 9,000.-

| | |
|-----------------|--|
| Model | THL 280 PLUS |
| Hardness Scale | HL, HB, HRB, HRC, HRA, HV, HS |
| Memory | 48~600 groups (impact times: 32~1) |
| Measuring range | HLD(170~960) See below table 1 and table 2 |
| Accuracy | ±4HLD (760±30HLD) |
| Price | 45,000.- |

MODEL: SH21

สินค้าใหม่

Made in Japan



Brand : SONOARD

สอบถามราคา

| | |
|-------------------------------------|---|
| Model | SH-21 |
| Measuring Range | HRC 10 -70, HV 50 - 999, HS 20 -99.9, HB 85 - 550 |
| Digital Display with EL Black Light | |
| Maximum | Average |
| Memory | 2000 Pieces |



LEED HARDNESS Brand STAR TECH Made in Taiwan



| | |
|-----------------|-------------------------|
| Model | HM6561 |
| Hardness Scales | HB, HRC, HV, HB, HS, HL |
| Display | LCD With back light |
| Memory | 250 Groups |
| Price | 35,000.- |

| | |
|---------------------|-------------------------|
| Model | THL - 370 |
| Measuring range | HLD (170 ~ 960) HLD |
| Measuring direction | 360 dgree. |
| Hardness Scale | HL,HB,HRB,HRC,HRA,HV,HS |
| Memory | 600 groups max |
| Display | 3 inch screen |
| Price | 42,000.- |

MODEL: THL-370



COMBINED HARDNESS TESTER

Combined
Hardness Tester
NOVOTEST T-UD2
Price: 150,000.-



| Specification | NOVOTEST T-UD2 | |
|--|---|-----------|
| UCI probe types | 1kgf (10N) 2.2 lbf, 5kgf (50N) 11lbf, 10kgf (98N) | |
| Leeb probe types | D, DC, DL, C, D+15, E, G | |
| Indenter | Diamond Indenter (UCI), Hardened ball (Leeb) | |
| Measuring direction | Any direction 360° | |
| Data storage | Limited only by the memory card | |
| Measurement range | Rockwell, HRC | 20 - 70 |
| | Brinell, HB | 90 - 450 |
| | Vickers, HV | 230 - 940 |
| temporary resistance (tensile strength), Mpa | 370 - 1740 | |
| Measuring accuracy | HV+ / - 3%; HRC+ / - 1.5%; HB+ / - 3%; | |
| Hardness scale | HRC, HB, HV, Mpa | |
| Materials | UCI probe - pre-calibrated for steel. | |
| | Leeb probe - pre-calibrated for steel, alloy, steel, cast iron, stainless steel, aluminum, bronze, brass, copper. | |
| | Additional custom materials for calibration. | |

Combined
Hardness Tester
NOVOTEST T-UD3



Price: 180,000.-

| Specification | NOVOTEST T-UD3 |
|---------------------|--|
| UCI probe types | 1 kgf (10N) 2.2 lbf, 5 kgf (50N) 11 lbf, 10 kgf (98N) 22 lbf |
| Leeb probe types | D, DC, DL, C, D+15, E, G |
| Measuring range | HV:230~940; HRC:20~70; HB:90~650. Tensile strength, MPa 370~1740 |
| Measuring accuracy | HV:±3%HV; HRC:±1.5%HRC; HB:±3%HB |
| Indenter | Diamond Indenter (UCI), Hardened ball (Leeb) |
| Measuring direction | Any direction 360° |
| Data storage | Limited only by the memory card |
| Communication | Upload data to PC and export as a spreadsheet (USB cable and software included) |
| Hardness scale | HRC, HB, HV, HRB, HS, HL, Mpa |
| Materials | Ultrasonic (UCI) probe - pre-calibrated for steel. |
| | Dynamic (Leeb) pre-calibrated for steel, alloy steel, cast iron, stainless steel, aluminum, bronze, brass, copper. |
| | Additional custom materials for calibration. |