

GENERATOR

เครื่องกำเนิดไฟฟ้า, เครื่องปั่นไฟ

LIGHTING TOWER

60HZ 1800RPM

 Perkins®

 GB POWER



Standard Equipment	GBT-4000	GBT-P4000	GBT-P6000
Length(mm)	3220(2100,the tow bar be retracted or detached)		
Width(mm)	1620	1620	1800
Height(mm)	2250	2250	2460
Height(Mast be extended fully.m)	9	9	9
Weight(dry,kg)	1250	1250	1400
Engine model	GB POWER 380	403D-11G(Perkins)	403D-15G(Perkins)
Frequency (Hz)	60	60	60
Speed(rpm)	1800	1800	1800
Continued Power(kVA)	9	9	12
Number of Cylinders	3	3	3
Diesel Engine Characters	4-Cycle,In line, Watercooled Diesel		
Combustion Type	Direct Injection		
Engine Aspiration	Naturally aspirated	Naturally aspirated	Naturally aspirated
Emission Level		Stage 3	Stage 3
Alternator	Stamford or Loerysomer Brushless & Single phase		
Rating Voltage (V)	230		
Alternator Insulation	Class H		
Fuel Tank Type	Bunded Tank		
Type of Lights	Metal Halide floodlight		
	Rectangle(E40/E39,GEWISS)		
Number & Power of Lights	4 X 1000W	4 X 1000W	6 X 1000W
Mast Extension	Hydraulic Operation or Manual Type		
Mast Erection Time	<30 Seconds		
Mast Rotation	330° Manual Operation		
Light Bar Tilt	90° Electrically		
Control System	Deepsea3110		
Stabilizing Legs	Manually		
Trailer suspension& braking system	Leaf spring axle (hexagonal rubber axle for 4HVP) with drum brake		
Hitch&tow bar	Ball or O ring&Stable hitch in height		
Tire Rim Size	14"	14"	16"
Output Sockets	1 PCS(230V, 10A)		
Acoustic Pressure	65 dB (A) AT 7 Meters away		
Max.load quantity in a 40" container(sets)	7		

GENERATOR

เครื่องกำเนิดไฟฟ้า, เครื่องปั่นไฟ



TRAILER TYPER GENERATOR SET(50HZ)

TRAILER TYPER GENERATOR SET(60HZ)

GB Trailer Type Mobile Generator Sets with sound proof, weather proof enclosures and are made up of a trailer with 2 or 4 wheels. Power range from 10kva up to 2000kva with CUMMINS, PERKINS, DEUTZ, YANMAR, ISUZU, GB POWER engine for your choose.

The inside of the trailer set is equipped with internal generator set mounted on base fuel tank, vibration mountings, visible control panel, and mechanical supporting legs.

Advantages:

Suitable for outdoor works.

Strong technical support.

Advanced production line with skilled workers.

Good reputation for reliable quality and reasonable price.

Single axle or double-axle, mechanical or auto brake for option.

Adopt international quality standards, to meet high quality requirement.

ติดต่อสอบถาม สายด่วน 082-1288881, 081-7731860 หรือ OFFICE 02-9744354-6

GENERATOR

เครื่องกำเนิดไฟฟ้า, เครื่องปั่นไฟ

CONTAINERIZED POWER STATION



ติดต่อสอบถาม สายด่วน 082-1288881, 081-7731860
หรือ OFFICE 02-9744354-6

1-50HZ PERKINS GENERATOR SET SPECIFICATION

Frequency 50HZ			Perkins Diesel Engine (Water Cooled 1500 RPM)						Dimansion (L x W x H)	
Genset Model	Standby Power	Prime Power	Engine Model	Prime Power	Standby Power	Cylinder	Bore Storke	Consumption 100% Loading	Open Type	Silent Type
	(KVA/KW)	(KVA/KW)		(KW)	(KW)		(MM)	(L/H)	(CM)	(CM)
GB-P1000	1100/880	1000/800	4008TAG2A	861	947	8	160 X 190	220	540 X 165 X 245	20FT
GB-P1250	1375/1100	1250/1000	4012-46TWG2A	1055	1166	12	160 X 190	262	560 X 200 X 245	40HQ
GB-P1350	1485/1188	1350/1080	4012-46TWG3A	1149	1263	12	160 X 190	283	560 X 200 X 245	40HQ
GB-P1500	1650/1320	1500/1200	4012-46TAG2A	1267	1395	16	160 X 190	301	560 X 200 X 245	40HQ
GB-P1650	1815/1452	1650/1320	4012-46TAG3A	1440	1583	16	160 X 190	370	560 X 220 X 260	40HQ
GB-P1850	2035/1628	1850/1480	4016-TAG1A	1537	1690	16	160 X 190	363	560 X 220 X 260	40HQ
GB-P2080	2288/1830	2080/1664	4016-TAG2A	1715	1886	16	160 X 190	434	560 X 220 X 260	40HQ
GB-P2200	2420/1936	2200/1760	4016-61TRG3A	1875	2083	16	160 X 190	434	560 X 220 X 260	40HQ

1-50HZ CUMMINS GENERATOR SET SPECIFICATION

Frequency 50HZ			CUMMINS Diesel Engine (Water Cooled 1500 RPM)						Dimansion (L x W x H)	
Genset Model	Standby Power	Prime Power	Engine Model	Prime Power	Standby Power	Cylinder	Bore Storke	Consumption 100% Loading	Open Type	Silent Type
	(KVA/KW)	(KVA/KW)		(KW)	(KW)		(MM)	(L/H)	(CM)	(CM)
GB-C750	825/660	750/600	KTA38-G2	664	731	12	159 X 159	161.8	450 X 178 X 243	20 FT
GB-C800	880/704	800/640	KTA38-G2B	711	789	12	159 X 159	160.2	450 X 178 X 243	20 FT
GB-C900	1000/880	900/720	KTA38-G2A	813	895	12	159 X 159	182.4	450 X 178 X 243	20 FT
GB-C1000	1100/880	1000/800	KTA38-G5	880	970	12	159 X 159	199.4	450 X 178 X 243	20 FT
GB-C1125	1237/990	1125/900	KTA38-G9	990	1089	12	159 X 159	256	450 X 210 X 220	20 FT
GB-C1250	1375/1100	1250/1000	KTA50-G3	1097	1207	16	159 X 159	260	500 X 210 X 230	40HQ
GB-C1400	1540/1232	1400/1120	TKA50-G8	1200	1320	16	159 X 159	288	500 X 210 X 230	40HQ
GB-C1500	1650/1320	1500/1200	KTA50-GS8	1287	1429	16	159 X 159	308	500 X 210 X 230	40HQ
GB-C1875	2062/1650	1875/1500	QSK60-G3	1615	1790	16	159 X 190	363	600 X 220 X 260	40HQ
GB-C2045	2250/1800	2050/1636	QSK60-G4	1695	1861	16	159 X 190	394	600 X 220 X 260	40HQ

1-60HZ PERKINS GENERATOR SET SPECIFICATION

Frequency 60HZ			PERKINS Diesel Engine (Water Cooled 1800 RPM)						Dimansion (L x W x H)	
Genset Model	Standby Power	Prime Power	Engine Model	Prime Power	Standby Power	Cylinder	Bore Storke	Consumption 100% Loading	Open Type	Silent Type
	(KVA/KW)	(KVA/KW)		(KW)	(KW)		(MM)	(L/H)	(CM)	(CM)
GB-P1000	1100/880	1000/800	4008TAG2	838	924	8	160 X 190	212	500 X 165 X 225	20FT
GB-P1250	1375/1100	1250/1000	4012-46TWG2A	1104	1155	12	160 X 190	260	540 X 165 X 245	40HQ
GB-P1400	1540/1232	1400/1120	4012-46TWG3A	1149	1263	12	160 X 190	291	540 X 165 X 245	40HQ
GB-P1500	1650/1320	1500/1200	4012-46TAG2A	1272	1399	12	160 X 190	301	560 X 200 X 245	40HQ
GB-P1750	1925/1540	1750/1400	4012-46TAG3A	1440	1583	12	160 X 190	361	560 X 220 X 260	40HQ

1-60HZ CUMMINS GENERATOR SET SPECIFICATION

Frequency 60HZ			PERKINS Diesel Engine (Water Cooled 1800 RPM)						Dimansion (L x W x H)	
Genset Model	Standby Power	Prime Power	Engine Model	Prime Power	Standby Power	Cylinder	Bore Storke	Consumption 100% Loading	Open Type	Silent Type
	(KVA/KW)	(KVA/KW)		(KW)	(KW)		(MM)	(L/H)	(CM)	(CM)
GB-C750	825/660	750/600	KT38-G	679	747	12	159 X 159	141	455 X 210 X 232	20FT
GB-C900	990/792	900/720	KTA38-G2	814	895	12	159 X 159	182	455 X 210 X 232	20FT
GB-C1000	1100/880	1000/800	KTA38-G2A	915	1007	12	159 X 159	200	455 X 210 X 232	20FT
GB-C1125	1238/990	1125/900	KTA38-G4	1011	1112	12	159 X 159	232	455 X 210 X 232	20FT
GB-C1250	1375/1100	1250/1000	KTA38-G9	1110	1220	12	159 X 159	266	500 X 220 X 220	20FT
GB-C1500	1650/1320	1500/1200	KTA38-G9	1384	1657	12	159 X 159	330	500 X 220 X 220	40HQ

GENERATOR

เครื่องกำเนิดไฟฟ้า, เครื่องปั่นไฟ

DIESEL PUMP SET

DIESEL PUMP SET

ENGINE PERKINS/CUMMINS/DEUTZ/GB POWER, power from 15kw to 900kw, engine widely used in power supplying areas, such as for fire-fighting pump, irrigation works, flooding-proof, drainage, mud pump, sand pump and other applications. With its advantage reliability and safety.

PUMP Various kinds of pump such double-suction pump, long spindle deep well pump and chemical pump can meet various needs, fire, water works, hydropower station, chemical power station, steel plant, agriculture irrigation and municipal works

CONTROL SYSTEM LED control model system, with automatic switching of main pump and spare pump set. Double energy switching system can keep the pump set working stable, with protections functions, which can keep whole pump set working under smoothly.



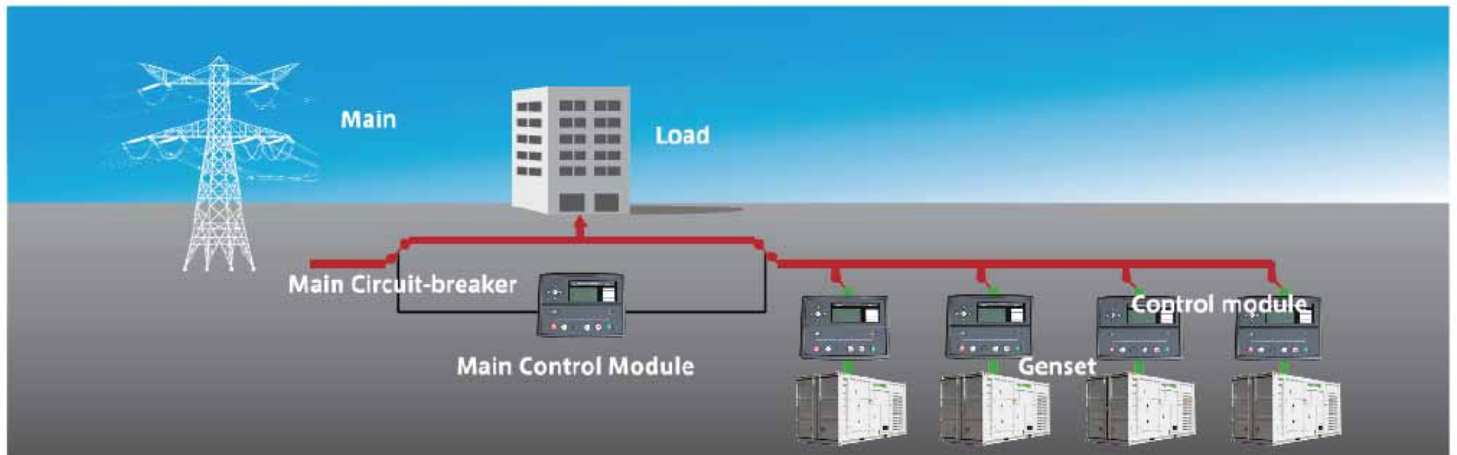
ติดต่อสอบถาม สายด่วน 082-1288881, 081-7731860 หรือ OFFICE 02-9744354-6



Diesel Pump Model	Rated Capacity (m3/h)	Rated Head(m)	Rated Speed(m)	Pump Model	Engine Model
GB-30/80	80	35	3000	80ZW-80-35	4L22-SB
GB-60/50	50	60	3000	80ZW-50-60	4L22-SB
GB-70/60	60	70	3000	80ZW-60-70	4L22-SB
GB-30/100	100	30	3000	100ZW-100-300	4L22-SB
GB-B60/80	80	60	3000	100ZW-80-60	KM4996-SB
GB-80/80	80	80	3000	100ZW-80-60	KM4996-SB
GB-38/180	180	38	3000	150ZW-180-38	KM4996-SB
GB-15/100	100	15	1500	ZW100-100-15	4L22-SB1
GB-20/80	80	20	1500	ZW100-80-20	4L22-SB1
GB-20/120	120	20	1500	ZW125-120-20	4L22-SB1
GB-14/180	180	14	1500	ZW150-180-14	4L22-SB1
GB-20/180	180	20	1500	ZW150-180-20	495AD
GB-30/180	180	30	1500	ZW150-180-30	4100AD
GB-15/200	200	15	1500	ZW150-200-15	495AD
GB-25/200	200	25	1500	ZW150-200-25	4100AD
GB-14/280	280	14	1500	ZW200-280-14	495AD
GB-28/280	280	28	1500	ZW200-280-28	TL4100ZD
GB-28/280S	280	28	1500	ZW200-280-28	4135D
GB-18/300	300	18	1500	ZW200-300-18	4100AD
GB-20/420	420	20	1500	ZW250-420-20	TL4100ZD
GB-20/420S	420	20	1500	ZW250-420-20	4135D
GB-14/800	800	14	1500	ZW300-800-14	4135AD

GENERATOR

เครื่องกำเนิดไฟฟ้า, เครื่องปั่นไฟ



AUTOMATIC SYNCHRONIZATION SYSTEM

GB POWER Automatic Synchronization System is adopting the PLC(programmable logic controller) of the DSE 8610 Intelligent Parallel Generating Set made by UK Deep Sea Electronics plc. The DSE 8610 series module has been specially designed to allow the operator to start and stop the generator, and if required, transfer the load to the generator either manually(via fascia mounted push-button) or automatically.

Automatic Synchronization system is suitable for 2 or more than 2 units gensets using in the same time. The main function as follows:

1. Each genset running and providing power in the time.
2. After genset is synchronized, the power is distributed reasonably and the distance rate is not less than 10%.
3. To add power when heavy loading and reduce power when loading.
4. Both operation type by manual or automatic.
5. To synchronize by manual, then to distribute or transfer actual power.
6. The safety protecting function including over current, over loading , high voltage or low voltage.



ติดต่อสอบถาม สายด่วน 082-1288881, 081-7731860 หรือ OFFICE 02-9744354-6

Automatic Transfer System (ATS)

ATS is automatic activated by municipal electricity signal or upon client's request and is automatically put into operation. After electricity is recovered, unit will monitor for 30 seconds (adjustable) before automatically sending shutdown signal. Self-shutdown of unit is performed after maintenance, which enables full-automatic and unattended operation with the possibility of manual operation. When city power be failure, generator set will starting automatically, then generator set providing power for loading system; when city power comes back, city power providing power for loading system, then generator set will stop automatically. GB POWER providing two choices for ATS, by SOCOMEC or GB POWER own brands, both of them belong to reliability.

AUTOMATIC TRANSFER SYSTEM ATS



CNC-COMPUTER NUMERICAL CONTROL

เครื่องแกะสลักไม้, กัดลายไม้, จลุไม้, ป้ายโฆษณา

CNC ROUTER MACHINE

MODEL: ART1325T

SPECIFICATIONS

- Working Size : 1300 x 2500 mm
- Welded steel tube body
- Cast aluminum gantry
- 3KW water cooling spindle
- Leadshine 860H
- Fuling inverter
- T-slot table
- NC-studio controller
- Inner cabinet



Free Computer Set

Price: 320,000.-

FIBER LASER MARKING MACHINE

SPECIFICATIONS

- Laser power : fiber 10W/ 20W/ 30W
- Working area : 100x100mm
- Laser wavelength : 1064nm
- Response time : 0.5ms
- Frequency of pulse : 20-100KHz
- Max.marking depth : ≤ 0.4 mm
- Marking speed : ≤ 7000 mm/s
- Marking lines : 1-10 lines (in the marking area)
- Minimum line width : 0.1mm
- Minimum character : 0.15mm
- Repeatability accuracy : ± 0.002 mm
- Resolution ratio : 0.1mm
- Marking content : Text, pattern, date, bar code, etc
- Operation system : Microsoft Windows XP or Window 2000
- Control software : EZCAD control software or laer 2.1 marking control software



Free Computer Set

ART-F10A (10W)

Price: 330,000.-

ART-F20A (20W)

Price: 350,000.-

ART-F30A (30W)

Price: 390,000.-



OPTIONAL ROTARY

Price: 25,000.-

CNC-PLASMA LASER CUTTING MACHINE

เครื่องตัดพลาสมา และเครื่องตัดไฟเบอร์เลเซอร์

CNC- PLASMA CUTTING MACHINE

เครื่องตัดพลาสมา



SPECIFICATIONS

ART1325H 45A Plasma cutting machine
working area:1300*2500mm,gear
rack,round guide rail ,dsp controller
system with THC ,45A Hypertherm
power supply ,leadshine drivers and
stepper motors, USB interface,



Price: 450,000.-

ติดต่อสอบถาม สายด่วน 082-1288881, 081-7731860หรือ OFFICE 02-9744354-6

CNC - FIBER LASER CUTTING MACHINE

เครื่องตัดไฟเบอร์เลเซอร์

ART1530F



SPECIFICATIONS

- Working area : 1500*3000mm
- Laser source: Raycus fiber 500w
- 0.2-4mm stainless steel /0.2-6mm carbon steel
- Motor : Japanese Yaskawa servo motor
- Controller : bochu/nc studio
- Laser head: mech
- Water chiller ,knife working table
- Max Cutting speed 12m/min
- XY MAX cutting speed 20m/min
- Max moving speed 30m/min
- Min. cutting line width 0.02

PRICE: 2,550,000.-



Service & Support ศูนย์ซ่อมและศูนย์บริการของเรา



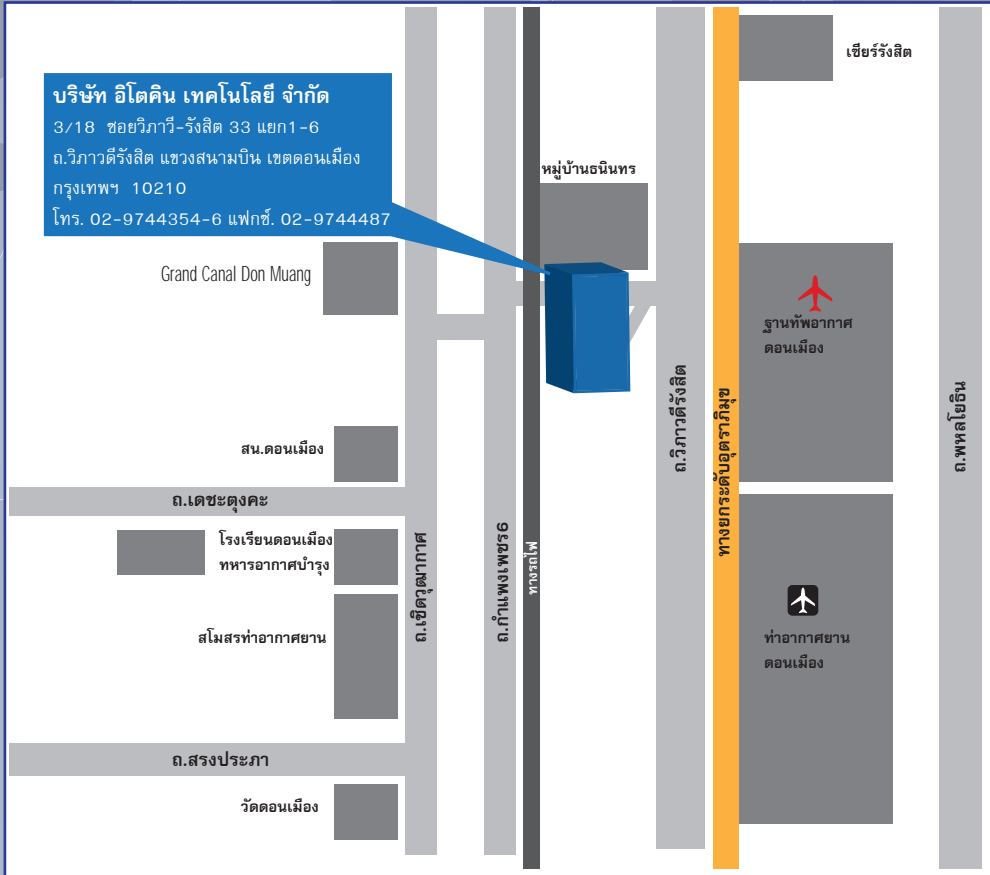
บริการรับซ่อมบำรุง รักษา เครื่องมือวัด เครื่องมือทดสอบ
เครื่องจักรในโรงงานอุตสาหกรรมทุกชนิด ทุกยี่ห้อ ทุกประเภท
ที่ทันสมัย เรายังมีศูนย์บริการที่มีประสบการณ์ ยาวนานมากกว่า
10 ปี ลูกค้าสามารถปรึกษา ปัญหาการใช้งานเครื่อง **ฟรี**



ITOKIN TECHNOLOGY



สอบถามเพิ่มเติมได้ที่
02-9744354-6
สายด่วน 082-1288881, 081-7731860



ITOKIN TECHNOLOGY.,CO.LTD

3/18 SOI 33, VIBHAVADIRANGSIT, 1-6 SEPARATE, AIRPORT, DONMUANG, BANGKOK 10210 THAILAND
TEL: 02-9744354-6 HOTLINE: 082-1288881, 081-7731860 FAX: 02-9744487 EMAIL: SALESITOKIN@GMAIL.COM

W

WWW.ITOKIN2000.COM
WWW.CNC-MACHINETHAI.COM
WWW.VIDEOBORESCOPETHAI.COM

F

[FACEBOOK/ITOKINTECHNOLOGY](https://www.facebook.com/ITOKINTECHNOLOGY)

LINE

LINE ID : ITOKIN2000.COM

GARAGE WORKSHOP EQUIPMENT

Electric Chain Hoist รอกใช้ไฟฟ้า



Model	Method of use	Capacity (kgs)	Rated Volt (V)	Input Power (W)	Lifting Speed (m/min)	Lifting Speed (m/min)	Lifting Height (m)	Packing Size (cm)	G.W./N.W. (kgs)	QTY/CTN (PCS)	Price
CPSTRH101 (HG200)	Single-hook	100	230	450	100	10	12	45x37x16	24/22	2	สอบถาม
	Double-hook	200			200	15	6				
CPSTRH102 (HG205)	Single-hook	125	230	0.8	125	10	12	45x37x16	25/23	2	สอบถาม
	Double-hook	250			250	5	6				
CPSTRH103 (HG400)	Single-hook	200	230	780	200	10	12	52x43x18	35/33	2	สอบถาม
	Double-hook	400			400	15	6				
CPSTRH104 (HG500)	Single-hook	250	230	930	250	10	12	52x43x18	36/34	2	12,500.-
	Double-hook	500			500	15	6				
CPSTRH105 (HG600)	Single-hook	300	230	1000	300	10	12	52x43x18	37/35	2	สอบถาม
	Double-hook	600			600	15	6				
CPSTRH106 (HG800)	Single-hook	400	230	1350	400	10	12	52x43x19	41/39	2	สอบถาม
	Double-hook	800			800	15	6				
CPSTRH107 (HG980)	Single-hook	500	230	1650	500	10	12	60x30x37	36/34	1	สอบถาม
	Double-hook	1000			1000	15	6				
CPSTRH108	Single-hook	600	230	1850	600	10	12	60x30x37	38/36	1	23,000.-
	Double-hook	1200			1200	15	6				

Electric Chain Hoist รอกใช้ขับเคลื่อนด้วยพลังงานไฟฟ้า พร้อมแผงปุ่มควบคุมขึ้น-ลง



Type	Capacity (Ton)	Lifting Height (m)	Lifting Speed (m/min)	Lifting Motor				I-Beam (mm)	N.W./G.W. (kgs)	Packing Size (mm)	Price	
				Power (Kw)	Rotation Speed (r/min)	Phases	Voltage (V)					Frequency (Hz/s)
CPSTR9E0031B	0.3	3	7.1	0.55	1440	3	220/440	50/60	58-127	30/35	400x380x350	สอบถาม
CPSTR9E0051B	0.5	3	6.8	0.8	1440	3	220/440	50/60	58-127	30/35	400x380x350	สอบถาม
CPSTR9E0101B	1	3	6.6	1.5	1440	3	220/440	50/60	68-130	61/68	600x350x530	55,000.-
CPSTR9E0201B	2	3	6.6	3.0	1440	3	220/440	50/60	82-153	115/124	700x440x600	75,000.-
CPSTR9E0301B	3	3	5.4	3.0	1440	3	220/440	50/60	82-153	131/142	700x440x600	95,000.-
CPSTR9E0501B	5	3	2.7	3.0	1440	3	220/440	50/60	100-178	151/162	700x440x600	สอบถาม
CPSTR9E1001B	10	3	2.7	3.0x2	1440	3	220/440	50/60	150-220	300/330	950x700x860	สอบถาม

Wire Rope Pulling Hoist เครื่องดึงรอกสลิง



CPSTR1600 1600 kgs
CPSTR3200 3200 kgs

Model	CPSTR1600	CPSTR3200
Rated forward handpower (N)	400	438
Rated capacity (kgs)	1600	3200
Rope diameter (mm)	11	16
Rope Size (m)	20	20
Max travelling load (kgs)	2400	4000
N.W. (kgs)	12	23
G.W. (kgs)	27	50.8
Max outer size (LxHxD mm)	545x284x97	660x325x116
Packing Size (mm)	1040x770x640	1060x770x610

PRICE 12,500.- 19,500.-

Double Lever Block Hoist รอกดึง



รอกดึง

Model	Capacity (Ton)	Lift Height (m)	N.W. / G.W. (kgs)	Packing Meas. (L x W x H) (mm)	Price
CPSTR7005 (HSHY0.5)	0.5	1.5	3.8/4.3	350x120x85	5,500.-
CPSTR7075 (HSHY0.75)	0.75	1.5	6.3/7.3	370x175x145	6,500.-
CPSTR7010 (HSHY1)	1	1.5	6.7/7.3	370x175x145	6,900.-
CPSTR7015 (HSHY1.5)	1.5	1.5	10.5/11.2	515x195x160	7,500.-
CPSTR7020 (HSHY2)	3	1.5	10.8/11.5	515x195x160	8,900.-
CPSTR7030 (HSHY3)	3	1.5	18/18.7	540x220x220	11,500.-
CPSTR7062 (HSHY6)	6	1.5	25.8/26.5	540x220x220	15,000.-

GARAGE WORKSHOP EQUIPMENT

CHAIN TROLLEY



Model	CPSTR9405	CPSTR9410	CPSTR9420	CPSTR9430	CPSTR9450	CPSTR9500
Capacity (Ton):	0.5	1	2	3	5	10
Length of Chain (m):	3	3	3	3	3	3
N.W. / G.W. (kgs):	10/10.5	12/12.5	18/19	26/27	37/38	78.5/89
Packing Size (mm):	280x200x160	300x230x200	320x270x220	335x310x260	335x340x300	480x440x410
Price	6,500.-	7,500.-	9,500.-	13,500.-	17,000.-	25,000.-

Chain Block Hoist

Model	Capacity (Ton)	Lift Height (m)	Headroom (Hook to Hook) Hmin(mm)	Chainpull to Lift Full Load	No. of Load Chain Fall Load	Extra Weight Perimeter of Extra Lift(kgs)	N.W. / G.W. (kgs)	Packing Meas. (L x W x H) (mm)	Price
CPSTR90051(HS0.5)	0.5	2.5	295	260N	1	1.7	7/7.3	240 x 170 x 130	4,500.-
CPSTR90101(HS1)	1	2.5	330	323N	1	1.7	10.2/9.8	250 x 180 x 140	5,500.-
CPSTR90151(HS1.5)	1.5	2.5	410	395N	1	2.3	18/18.5	360 x 205 x 150	6,500.-
CPSTR90201(HS2)	2	2.5	430	346N	2	2.5	15.5/16	290 x 200 x 150	7,000.-
CPSTR90301(HS3)	3	3	530	390N	2	3.7	22/22.5	360 x 205 x 150	7,500.-
CPSTR90501(HS5)	5	3	588	505N	2	5.3	37/38	480 x 245 x 185	8,500.-
CPSTR91001(HS10)	10	3	700	520N	4	9.7	67/68	610 x 480 x 260	23,500.-



OIL TANK CHAIN HOIST

Model: CPSTRSL1

Model: CPSTRSL1

Max. Working Capacity 1 Ton

Chain Length : 500 mm

N.W. : 3.6 kgs

G.W. : 4 kgs

Package Size : 210 x 150 x 90 mm

Price: 3,900.-



Motorcycle Lifting Table

แท่นยกรถมอเตอร์ไซด์ สำหรับซ่อมรถมอเตอร์ไซด์ หรือตั้งโชว์รถมอเตอร์ไซด์



Price: 75,000.-

Model	CPSTRE64501
Capacity	600 kgs
Table Size	2460 x 1220 mm
Min.Height	190 mm
Max.Height	840 mm
N.W.	220 kgs
G.W.	250 kgs
Package Size	2220 x 670 x 380 mm

AUTOMOTIVE TOOLS & WORK STORAGES

TOOL CABINET WITH TOOLS



Specification	W x D x H
Overall	688 x 458 x 735 mm
Overall with Casters	688 x 458 x 885 mm
2 Drawers	589 x 409 x 480 mm
2 Drawers	589 x 409 x 745 mm
2 Drawers	589 x 409 x 100.5 mm
1 Drawers	589 x 409 x 153 mm
N.W. (empty)	71 kgs
G.W. (empty)	76.5 kgs
Package	770 x 530 x 845 mm
QTYICTN	1 PC

ราคาตู้เปล่า

Price: 18,500.-

ราคาตู้รวมเครื่องมือ

Price: 39,500.-

SET เครื่องมือในตู้รวม

- คีมปากแหลม 8" คีมปากจิ้งจก 8" คีมตัดปากเฉียง 6"
- ลูกบ็อกมือ 1/2"
- ตามขัดฟรี 1/2" + ด้ามยาว + ด้ามต้อบ็อก
- ประแจขัน 8*9, 10*11, 12*13, 14*15, 16*17, 18*19
- ชุดประแจ L พิเศษ L-Type Wrench Special Type (CR-V)
- คีมลีด + คีมคอมมาปากขยาย
- ลูกบ็อก 6 เหลี่ยม 3/8" + ด้ามขันฟรี 3/8"
- ประแจปากตาย 6*7, 8*9, 10*11, 12*13, 14*15, 16*17, 18*19, 20*22, 21*23, 24*26
- ประแจแหวนผ่า 8*10, 11*13, 12*14, 16*18, 17*19, 19*22, 24*27, 30*32
- ประแจเลื่อน 3 PCS TOOLS SETS 6', 8', 10'
- สกัดแบน + เหล็กนำศูนย์
- คอนเทิลิก, คอนPVC, สกัดแบน
- ประแจแหวน 6*7, 8*9, 10*11, 12*13, 14*15, 16*17, 18*21, 19*22
- ประแจปากตายข้างแหวน 5PCS: 23, 24, 26, 28, 30
- ไชควงแฉก + แบน T27*115, T30*115, T40*130, 1.2*6.5*150, 1.2*6.5*125, 0.5*3.0*75, 1.2*6.5*100, PH1*75
- ด้ามขันฟรี 1/4" + ลูกบ็อกซ์ + ด้ามขันต่างๆ + ประแจ L
- ประแจปากตายข้างแหวน 6, 7, 8, 9, 10, 11, 12, 13, 14, 15, 16, 17, 18, 19, 20, 21, 22 mm
- ประแจแหวน 6*7, 8*9, 10*11, 12*13, 14*15, 16*17, 18*19, 20*22
- 8PCS TOOLS SETS คีมหุบแหวนลีด ปากตรง, คีมหุบแหวนลีดปากงอ, คีมถ่างแหวนลีด ปากตรง, คีมถ่างแหวนลีด ปากงอ, คีมถ่างแหวนลีด ปากแบน



SPILFYTER

แผ่นซับน้ำมันและกุ้นดูดซับน้ำมัน ผลิตภัณฑ์จากสหรัฐอเมริกา



Bronze Oil-Only Meltblown Sorbent Pad

ผลิตจาก Meltblown polypropylene ชนิดดูดซับน้ำมัน
 ใต้ดีเป็นพิเศษราคาประหยัดดูดซับของเหลวที่มีส่วนประกอบ
 ของปิโตรเลียมไม่ดูดซับน้ำใช้สำหรับทำความสะอาดน้ำมันรั่ว
 ไทล ครอบน้ำมันบนพื้นและบริเวณที่มีน้ำมันหยด ลอยบนน้ำ
 จึงมีประสิทธิภาพในการทำความสะอาดน้ำมันรั่วไหลในทะเลหรือ
 แม่น้ำ บรรจุก้นที่แบบถุงพลาสติกเพื่อความประหยัดไม่มีรูปบน
 ผิวหน้าแผ่นจึงทำให้ดูดซับน้ำมันได้มากที่สุดเมื่อเทียบกับแผ่นดูด
 ซับรุ่นอื่น ๆ มีหลายขนาดและความยาวให้เลือกใช้ตาม
 ความเหมาะสมของงาน

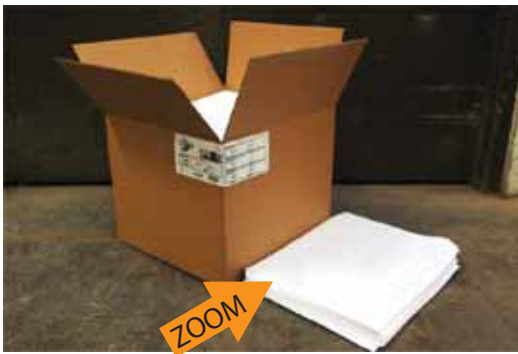
Bronze Oil-Only Meltblown Sorbent Pad		
Model	OBW-70	OBW-75
สี	ขาว	ขาว
บรรจุภัณฑ์	ถุง	ถุง
ขนาดบรรจุ	200 แผ่น	100 แผ่น
น้ำหนัก	5.9 กิโลกรัม	5.9 กิโลกรัม
ความกว้างยาว	41 x 46 cm	41 x 46 cm
ความหนา	ปกติ	หนาพิเศษ
ปริมาณการดูดซับ	151 ลิตร	146 ลิตร
Price	5,500.-	5,500.-



Platinum Oil-Only SMS Sorbent Pad

แผ่นดูดซับน้ำมันแบบแพลตฟอร์มชนิด 3
 เลเยอร์แข็งแรงพิเศษดูดซับของเหลวที่มีส่วนประ
 กอบของปิโตรเลียม ไม่ดูดซับน้ำ เลเยอร์กลางผลิต
 จาก Meltblown polypropylene ชนิดดูดซับน้ำมันใต้ดี
 เลเยอร์ด้านนอกทั้งสองด้านผลิตจากผ้าสปอน
 บอนด์จึงเหนียวและแข็งแรงเป็นพิเศษผ้าสปอน
 บอนด์มีความเหนียวและยืดหยุ่นสูงจึงสามารถใช้ขัด
 ถูบนพื้นผิวขรุขระได้โดยไม่ฉีกขาดมีรอยปะ
 กลางแผ่นทำให้สามารถฉีกแบ่งใช้ได้ตามความ
 เหมาะสมของงานมีรูบนแผ่นเพื่อเพิ่มความแข็ง
 แรงไม่เปื่อยยุ่ยง่ายบรรจุก้นที่แบบกล่องพร้อม
 ให้เลือกใช้ตามความเหมาะสมของงาน

Platinum Oil-Only SMS Sorbent Pad		
Model	OBW-70	OBW-75
สี	ขาว	ขาว
บรรจุภัณฑ์	กล่องกระดาษ	กล่องกระดาษ
ขนาดบรรจุ	200 แผ่น	100 แผ่น
น้ำหนัก	8.2 กิโลกรัม	6.8 กิโลกรัม
ความกว้างยาว	41 x 46 cm	41 x 46 cm
ความหนา	ปกติ	หนาพิเศษ
ปริมาณการดูดซับ	154 ลิตร	120 ลิตร
Price	9,500.-	7,500.-



Oil-Only Meltblown Sorbent Sock

Oil-Only Meltblown Sorbent Sock		
Model	OBW-30	OBW-37
สี	ขาว	ขาว
บรรจุภัณฑ์	กล่องกระดาษ	กล่องกระดาษ
ขนาดบรรจุ	15 ชิ้น	6 ชิ้น
น้ำหนัก	5.4 กิโลกรัม	5.4 กิโลกรัม
ความกว้างยาว	76 x 122 cm	76 x 305 cm
ปริมาณการดูดซับ	85 ลิตร	84 ลิตร
Price	8,500.-	8,500.-



กุ้นผลิตจาก polypropylene 100%
 ใช้ส่วนผสมที่เป็นวัตถุดิบรีไซเคิล 100%
 พร้อมกับประสิทธิภาพที่ดียิ่งกว่าเดิม กุ้น Sustayn
 สามารถใช้งานได้เทียบเท่าหรือดีกว่ากุ้นซับน้ำ
 มันทั่วไปที่ไม่ได้ใช้วัตถุดิบรีไซเคิลสำหรับใช้โอบล้อม
 เครื่องจักรหรือก้นน้ำมันที่รั่วซึมมีให้เลือก 2
 ความยาวสำหรับการใช้งานที่แตกต่างกันลอยบน
 น้ำจึงสามารถใช้ทำความสะอาดน้ำมันรั่วซึมขนาดเล
 กในน้ำได้เหมาะสำหรับใช้ล้อมและกักเก็บของเหลว
 เมื่อมีการรั่วไหลบนพื้นราบดูดซับของเหลวมีส่วน
 ประกอบของปิโตรเลียมไม่ซึม

Spunlaced Wipe Heavy-Duty

Spunlaced Wipe Heavy-Duty	
สี	ขาว
บรรจุภัณฑ์	ถุง
ขนาดบรรจุ	500 แผ่น
น้ำหนัก	3 กิโลกรัม
ความกว้างยาว	31 x 37 cm
ความหนา	หนาพิเศษ
Price	6,500.-



AIR COMPRESSORS

เครื่องปั๊มลม, เครื่องอัดอากาศ

ตัวเครื่องออกแบบมาให้มี
สกรูมีฟันมากขึ้น 5:6
และเพิ่มประสิทธิภาพของ
การทำลมอีก **10%**

ติดต่อสอบถาม สายด่วน 

082-1288881, 081-7731860

หรือ OFFICE 02-9744354-6

ROTARY SCREW COMPRESSORS ADVANCED TECHNOLOGY FROM GERMANY

Model	Motor (kw./Hp.)	Pressure (Bar.)	F.A.D. (M3/min.)	Dimension (MM.)	Connection (Inchs)	Noise DB(A)	Weight (kg.)
SF7.5A	7.5/10	7	1.2	770 x 770 x 980	1/2	67	350
SF7.5B		10	1.0				
SF7.5C		13	0.8				
SF7.5D		8	1.1				
SF11A	11/15	7	1.9	910 x 860 x 1400	1	69	420
SF11B		10	1.6				
SF11C		13	1				
SF11D		8	1.8				
SF15A	15/20	7	2.6	910 x 860 x 1400	1	70	450
SF15B		10	2.1				
SF15C		13	1.6				
SF15D		8	2.4				
SF18.5A	18.5/25	7	3.0	1130 x 900 x 1430	1-1/4	72	650
SF18.5B		10	2.6				
SF18.5C		13	1.9				
SF18.5D		8	2.8				
SF22A	22/30	7	3.6	1130 x 900 x 1430	1-1/4	72	700
SF22B		10	3.1				
SF22C		13	2.5				
SF22D		8	3.4				
SF30A	30/40	7	5.2	1290 x 995 x 1420	1-1/2	72	850
SF30B		10	4.3				
SF30C		13	3.6				
SF30D		8	4.9				
SF37A	37/50	7	6.4	1290 x 995 x 1420	1-1/2	75	900
SF37B		10	5.5				
SF37C		13	4.6				
SF37D		8	5.8				
SF45A	45/60	7	7.5	2000 x 1200 x 1798	2	75	1950
SF45B		10	6.6				
SF45C		13	5.2				
SF45D		8	7.2				
SF55A	55/75	7	10.2	2000 x 1200 x 1798	2	75	1990
SF55B		10	8.2				
SF55C		13	7.2				
SF55D		8	9.5				
SF75A	75/100	7	13.35	2000 x 1200 x 1798	2	76	2100
SF75B		10	11.5				
SF75C		13	9.5				
SF75D		8	12.4				
SF90A	90/125	7	16.5	2400 x 1400 x 1998	2-1/2	78	2200
SF90B		10	13.7				
SF90C		13	11.5				
SF90D		8	15.5				
SF110A	110/150	7	20.0	2400 x 1400 x 1998	2-1/2	78	2500
SF110B		10	17.0				
SF110C		13	14.0				
SF110D		8	18.5				
SF132A	132/175	7	23.5	2400 x 1400 x 1998	2-1/2	80	2600
SF132B		10	20.5				
SF132C		13	16.6				
SF132D		8	22.5				
SF160A	160/220	7	28.3	3500 x 1800 x 2180	4	80	3800
SF160B		10	24.5				
SF160C		13	20.5				
SF160D		8	27				
SF200A	200/270	7	38.5	3500 x 1800 x 2180	4	82	4200
SF200B		10	32.2				
SF200C		13	28.5				
SF200D		8	35.8				
SF250A	250/350	7	42	3500 x 1800 x 2180	4	85	4500
SF250B		10	38.1				
SF250C		13	34.6				
SF250D		8	40.5				



AIR COMPRESSORS

เครื่องปั๊มลม, เครื่องอัดอากาศ

COMPRESSED AIR TECHNOLOGIES

Belt- Drive Single Stage

สอบถามราคา

สายด่วน 082-1288881, 081-7731860

หรือ OFFICE 02-9744354-6



TA-120/15HP



TA-100/10HP



TA-100/7.5HP



TA-80/5.5HP



TA-65/2HP



TA-65/1HP

SPECIFICATIONS

Model	HP	KW	Bore	Stroke	min	No.	kg/cm ² /psi		R.P.M.	Liter	Diameter (Cm)
VA-65	1	0.75	65	44	205	2	8	116	635	90	350 x 980
TA-65	2	1.5	65	48	310	3	8	116	635	150	400 x 1000
VA-80A	3	2.2	80	60	560	2	8	116	770	165	400 x 1130
VA-80B	3	2.2	80	60	560	2	8	116	770	260	500 x 1100
TA-80A	5.5	4	80	60	900	3	8	116	900	260	500 x 1100
TA-80B	5.5	4	80	60	900	3	8	116	900	315	500 x 1400
VA-100	7.5	5.5	100	70	1290	2	8	116	970	315	500 x 1400
TA-100	10	7.5	100	70	1790	3	8	116	970	315	500 x 1400
TA-120	15	11	120	80	2850	3	8	116	860	520	600 x 1510
MA-155	20	15	155	116	3167	4	8	116	800	520	600 x 1510

Model	Price
VA-65	19,000.-
TA-65	29,000.-
VA-80A	38,000.-
VA-80B	39,000.-
TA-80A	47,000.-
TA-80B	53,000.-
VA-100	65,000.-
TA-100	75,000.-
TA-120	120,000.-
MA-155	165,000.-



ช่องทางติดต่อเรา

โทร : 02-9744354-6

สายด่วน : 082-1288881, 081-7731860

Fax : 02-9744487

Email : salesitokin@gmail.com

RECIPROCATING AIR COMPRESSORS

HEAVY DUTY INDUSTRY

RELIABLE QUALITY & LOW COST

FULL AFTER SALES SERVICE & SPARE PARTS

AIR COMPRESSORS

เครื่องปั๊มลม, เครื่องอัดอากาศ



HTA-100



PILOT VALVE

PRESSURE SWITCH

DUAL CONTROL SYSTEM

PRESSURE SWITCH CONTROL START-STOP

PILOT VALVE CONTROL LOAD-UNLOAD

BELT - DRIVE TWO STAGE

Model	HP	KW	Bore Stroke	min	No.	kg/cm ² /psi		kg/cm ² /psi		R.P.M.	Liter	Diameter (CM)
HTA-65	2	1.5	65 x48,51 x48	260	3	12	175	15	218	800	150	400 x 1000
HTA-80H	3	2.2	65 x48,51 x48	350	3	12	175	15	218	990	165	400 x 1130
HTA-80A	5.5	4.0	80 x60,65 x60	655	3	12	175	15	218	950	260	500 x 1100
HTA-100	7.5	5.5	100 x70,80 x70	825	3	12	175	15	218	800	315	500 x 1400
HTA-100H	10	7.5	100 x70,80 x70	1255	3	12	175	15	218	990	315	500 x 1400
HTA-120	15	11	120 x80,100 x80	1820	3	12	175	15	218	860	520	600 x 1510

Model	Price
HTA-65	35,000.-
HTA-80H	43,000.-
HTA-80A	52,000.-
HTA-100	72,000.-
HTA-100H	85,000.-
HTA-120	150,000.-



ช่องทางติดต่อเรา

โทร : 02-9744354-6

สายด่วน : 082-1288881, 081-7731860

Fax : 02-9744487

Email : salesitokin@gmail.com

Screw Compressor Compressor Set



CT-7.5C-8

COMPTECH Screw Compressor + Air Tank +
Air Dryer + Air Filter (1+0.01 micron)

Model	F.A.D. (M3/min)	Pressure (Bar.)	Motor (Hp.)	TANK (L.)	Price
CT-7.5C	0.55-0.8	8-13	7.5	350	149,000.-
CT-10C	0.8-1.2	8-13	10	350	175,000.-
CT-15C	1.1-1.65	8-13	15	500	185,000.-
CT-20C	1.55-2.25	8-13	20	500	220,000.-

GENERATOR

เครื่องกำเนิดไฟฟ้า, เครื่องปั่นไฟ

GB P Series generator set, using Perkins as power, perins engine(U.K) was formed as F.Perkins Ltd. On the 7th June 1932 in Peterborough, England by Frank Perkins. It is one of the wold's leading diesel engine manufactures, from 1932, Perkins design the world's first high-speed diesel engine "Perkins four cylinder Vixen", and in 1935, Perkins became the first company to hold six world diesel speed records for variety of distances set at the brooklands race track in Surrey.

Today, various Perkins engine have been made for the industrial, agricultural, constuction, material handing, marine and power generation markets. Worldwide, one in five tractors is powered by Perkins engine, Perkins have developed into the top suppliers in the world market with the electric power generation area concluding 4-2000KW(5-2600HP). People from all over the world gave full of trust to Perkins engine, the trust not only comes from Perkins excellent design, reliable products, but also from Perkins global distributors and the service which every agent provides.

Perkins®
1-50HZ PERKINS

GENERATOR SET SPECIFICATION



Frequency 50HZ			PERKINS Diesel Engine (Water Cooled 1500 RPM)						Dimansion (L x W x H)	
Genset Model	Standby Power	Prime Power	Engine Model	Prime Power	Standby Power	Cylinder	Bore Storke	Consumption 100% Loading	Open Type	Silent Type
	(KVA/KW)	(KVA/KW)		(KW)	(KW)		(MM)	(L/H)	(CM)	(CM)
GB-P 10	11/8.8	10/8.0	403A-11G	8.5	9.3	3	77 x 81	3	140 x 65 x 110	185 x 100 x 110
GB-P13	14/11	12.5/10	403A-15G1	12	13.3	3	84 x 90	3.7	140 x 65 x 110	185 x 100 x 110
GB-P15	16.5/13	15/12	403A-15G2	14	15	3	84 x 100	5	140 x 65 x 110	215 x 100 x 110
GB-P20	22/17.6	20/16	404A-22G	18.5	20.3	4	84 x 100	5.3	145 x 65 x 120	215 x 100 x 127
GB-P25	27.5/22	25/20	404D-22TG	24.5	27	4	84 x 100	7.1	145 x 65 x 120	225 x 100 x 127
GB-P30	33/26.4	30/24	1103A-33G	27.6	30.4	3	105 x 127	7.1	165 x 75 x 125	250 x 100 x 157
GB-P45	50/40	45/36	1103A-33TG1	41.5	45.6	3	105 x 127	10.7	175 x 75 125	260 x 100 x 157
GB-P50	55/44	50/40	1103A-33TG1	41.5	45.6	3	105 x 127	11	175 x 75 125	260 x 100 x 157
GB-P60	66/52	60/48	1103A-33TG2	54	59.3	3	105 x 127	13.9	175 x 75 125	260 x 100 x 157
GB-P80	88/70.4	80/64	1104A-44TG2	82	90	4	105 x 127	16.7	185 x 90 x 135	281 x 106 x 168
GB-P100	110/88	100/80	1104C-44TAG2	90	99	4	100 x 127	22.6	230 x 96 x 148	320 x 116 x 184
GB-P130	143/114	130/104	1006A-70TG1	121	134	6	100 x 127	30.2	230 x 96 x 148	320 x 116 x 184
GB-P150	165/132	150/120	1106A-70TG2	147	163	6	100 x 127	33.4	230 x 96 x 148	320 x 116 x 184
GB-P180	198/158.4	180/144	1106A-E70TAG3	170	190	6	100 x 127	41.6	240 x 96 x 160	340 x 120 x 90
GB-P200	220/176	200/160	1106A-E70TAG4	176	191	6	117 x 146	45.8	250 x 100 x 165	350 x 135 x 195
GB-P250	275/220	250/200	1506A-E88TAG3	228	250	6	112 x 149	56	250 x 100 x 165	370 x 135 x 195
GB-P300	330/264	300/240	1506A-E88TAG5	273	299	6	130 x 157	65	300 x 110 x 198	370 x 135 x 195
GB-P350	385/308	350/280	2206A-E13TAG2	305	349	6	130 x 157	75	340 x 115 x 198	440 x 145 x 225
GB-P400	440/352	400/320	2206A-E13TAG3	349	392	6	137 x 171	85	340 x 115 x 198	440 x 145 x 225
GB-P500	550/440	500/400	2506C-E15TAG1	396	413	6	137 x 171	99	380 x 125 x 210	470 x 185 x 225
GB-P500	550/440	500/400	2506C-E15TAG2	435	478	6	145 x 183	106	380 x 125 x 210	470 x 185 x 225
GB-P600	660/528	600/480	2806C-E18TAG1A	522	574	6	145 x 183	123	390 x 160 x 220	540 x 190 x 225
GB-P625	687.5/550	625/500	2806A-E18TAG2	565	609	6	160 x 190	132	390 x 160 x 220	540 x 190 x 225
GB-P750	825/660	750/600	4006-23TAG2A	632	695	6	160 x 190	157	460 x 180 x 225	540 x 190 x 225
GB-P800	880/704	800/640	4006-23TAG3A	679	760	8	160 x 190	172	540 x 165 x 245	540 x 190 x 225
GB-P910	1000/800	910/728	4008TAG1A	762	839	8	160 x 190	196	540 x 165 x 245	540 x 190 x 225
GB-P1000	1100/880	1000/800	4008TAG2A	861	947	8	160 x 190	220	540 x 165 x 245	20FT
GB-P1250	1375/1100	1250/1000	4012-46TWG2A	1055	1166	12	160 x 190	262	560 x 200 x 245	40HQ
GB-P1350	1485/1188	1350/1080	4012-46TWG3A	1149	1263	12	160 x 190	283	560 x 200 x 245	40HQ
GB-P1500	1650/1320	1500/1200	4012-46TAG2A	1267	1395	16	160 x 190	301	560 x 200 x 245	40HQ
GB-P1650	1815/1452	1650/1320	4012-46TAG3A	1440	1583	16	160 x 190	370	560 x 200 x 245	40HQ
GB-P1850	2035/1628	1850/1480	4016-TAG1A	1537	1690	16	160 x 190	363	560 x 200 x 245	40HQ
GB-P2080	2288/1830	2080/1664	4016-TAG2G	1715	1886	16	160 x 190	434	560 x 200 x 245	40HQ
GB-P2200	2420/1936	2200/1760	4016-61TRG3A	1875	2083	16	160 x 190	434	560 x 200 x 245	40HQ

GENERATOR

เครื่องกำเนิดไฟฟ้า, เครื่องปั่นไฟ



GB P Series generator set, using Perkins as power, perins engine(U.K) was formed as F.Perkins Ltd. On the 7th June 1932 in Peterborough, England by Frank Perkins. It is one of the wold's leading diesel engine manufactures, from 1932, Perkins design the world's first high-speed diesel engine "Perkins four cylinder Vixen", and in 1935, Perkins became the first company to hold six world diesel speed records for variety of distances set at the brooklands race track in Surrey.

Today, various Perkins engine have been made for the industrial, agricultural, constuction, material handing, marine and power generation markets. Worldwide, one in five tractors is powered by Perkins engine, Perkins have developed into the top suppliers in the world market with the electric power generation area concluding 4-2000KW(5-2600HP). People from all over the world gave full of trust to Perkins engine, the trust not only comes from Perkins excellent design, reliable products, but also from Perkins global distributors and the service which every agent provides.

1-60HZ PERKINS

GENERATOR SET SPECIFICATION



Frequency 60HZ			PERKINS Diesel Engine (Water Cooled 1800 RPM)						Dimension (L x W x H)	
Genset Model	Standby Power	Prime Power	Engine Model	Prime Power	Standby Power	Cylinder	Bore Stroke	Consumption 100% Loading	Open Type	Silent Type
	(KVA/KW)	(KVA/KW)		(KW)	(KW)		(MM)	(L/H)	(CM)	(CM)
GB-P 10	11/8.8	10/8	403D-11G	10.3	11.4	3	77 X81	3.8	140 X 65 X 110	185 X 100 X 110
GB-P15	16.5/14	15/12	403D-15G	16	18	3	84 X 90	4.8	140 X 65 X 110	185 X 100 X 110
GB-P20	22/17.6	20/16	403A-15G2	16	18	3	84 X 90	6	140 X 65 X 110	215 X 100 X 125
GB-P25	27.5/22	25/20	404D-22G	21.6	32.9	4	84 X 100	6.9	145 X 65 X 120	215 X 100 X 125
GB-P30	33/26.4	30/24	404D-22TG	29.6	32.6	4	84 X 100	7.9	145 X 65 X 120	225 X 100 X 125
GB-P38	41/33	38/30	1103A-33G	32.2	35.4	3	105 X 127	8.6	175 X 75 X125	250 X 100 X 157
GB-P50	55/44	50/40	1103A-33TG1	48.9	53.9	3	105 X 127	12.9	175 X 75 X125	250 X 100 X 157
GB-P60	66/53	60/48	1103A-33TG2	61.2	67.5	3	105 X 127	16.6	175 X 75 X125	250 X 100 X 157
GB-P750	82.5/66	75/60	1104A-44TG1	68.6	75.5	4	105 X 127	18.9	185 X 90 X 135	281 X 106 X 168
GB-P90	100/80	90/72	1104A-44TG2	82	90.2	4	105 X 127	23.6	185 X 90 X 135	281 X 106 X 168
GB-P100	110/88	100/80	1104D-44TAG2	102	112	4	105 X 127	29.7	200 X 90 X 150	281 X 106 X 168
GB-P125	138/110	125/110	1106A-70TG1	135	148	4	105 X 135	33	240 X 98 X 160	340 X 115 X 195
GB-P150	165/132	150/120	1106A-70TG1	135	148	6	105 X 135	33.5	240 X 98 X 160	340 X 115 X 195
GB-P200	220/176	200/160	1106A-70TAG3	172	191	6	105 X 135	46.4	240 X 98 X 160	340 X 115 X 195
GB-P250	275/220	250/200	1506A-E88TAG2	220	242	6	120 X 149	51.5	250 X 100 X 165	350 X 155 X 195
GB-P300	330/264	300/240	1506A-E88TAG4	279	307	6	112 X 149	60	340 X 115 X 195	420 X 145 X 220
GB-P350	385/308	350/280	1506A-E88TAG5	312	345	6	112 X 149	65	340 X 115 X 195	420 X 145 X 220
GB-P400	440/352	400/320	2206C-E13TAG2	349	381	6	130 X 157	84	340 X 115 X 195	420 X 145 X 220
GB-P450	481/385	450/360	2206C-E13TAG6	381	435	6	130 X 157	91	340 X 115 X 195	420 X 145 X 220
GB-P500	550/440	500/400	2506C-E15TAG1	435	490	6	137 X 171	113	390 X 125 X 210	470 X 155 X 225
GB-P550	605/484	550/440	2506C-E15TAG2	495	543	6	137 X 171	120	390 X 125 X 210	470 X 155 X 225
GB-P625	688/550	625/500	2806A-E18TAG2	543	598	6	145 X 183	127	390 X 160 X 220	470 X 155 X 225
GB-P750	825/660	750/600	4006-23TAG2A	640	715	6	160 X 190	200	460 X 180 X 225	540 X 165 X 225
GB-P800	880/704	800/640	4006-23TAG3A	715	795	6	160 X 190	200	460 X 165 X 225	560 X 200 X 225
GB-P1000	1100/880	1000/800	4008TAG2	838	924	8	160 X 190	212	540 X 165 X 245	20FT
GB-P1250	1375/1100	1250/1000	4012-46TWG2A	1104	1155	12	160 X 190	260	540 X 165 X 245	40HQ
GB-P1400	1540/1232	1400/1120	4012-46TWG3A	1149	1263	12	160 X 190	291	540 X 165 X 245	40HQ
GB-P1500	1650/1320	1500/1200	4012-46TAG2A	1272	1399	12	160 X 190	301	560 X 200 X 245	40HQ
GB-P1750	1925/1540	1750/1400	4012-46TAG3A	1440	1583	12	160 X 190	361	560 X 220 X 260	40HQ

GENERATOR

เครื่องกำเนิดไฟฟ้า, เครื่องปั่นไฟ



CUMMINS engines. Through near ten years of cooperation with CUMMINS, GB C series with its high reliability, low cost for use and maintenance to win the loyalty of many customers in the field of Army, transportation engineering system and mine industries. Established in 1919, headquartered in Columbus, Indiana, (USA) Cummins Inc, serves customers in more than 160 countries and territories through its network of 680 Company-owned and independent distributor locations and more than 5,000 dealer locations. As the largest foreign engine investors of China, Cummins possess Chongqing Cummins Engine Co., Ltd (produce M, N, K series engine) and Dongfeng Cummins Engine Co., Ltd (produce B,C, L series engine) and produce CUMMINS engines with globally uniform quality standard.

1-50HZ CUMMINS

GENERATOR SET SPECIFICATION



Frequency 50HZ			CUMMINS Diesel Engine (Water Cooled 1500 RPM)						Dimansion (L x W x H)	
Genset Model	Standby Power	Prime Power	Engine Model	Prime Power	Standby Power	Cylinder	Bore Storke	Consumption 100% Loading	Open Type	Silent Type
	(KVA/KW)	(KVA/KW)		(KW)	(KW)		(MM)	(L/H)	(CM)	(CM)
GB-C25	28/22	25/20	4B3.9-G	24	27	4	102 x 120	7.6	182 x 76 x 128	220 x 104 x 158
GB-C30	33/26.4	30/24	4B3.9-G2	27	30	4	102 x 120	7.6	182 x 76 x 128	220 x 104 x 158
GB-C40	44/35	40/32	4BT3.9-G2	36	40	4	102 x 120	7.8	182 x 76 x 128	220 x 104 x 158
GB-C50	55/44	50/40	4BTA3.9-G2	50	60	4	102 x 120	12.6	182 x 76 x 128	220 x 104 x 158
GB-C60	66/52.8	60/48	4BTA3.9-G2	50	60	4	102 x 120	12.6	182 x 76 x 128	220 x 104 x 158
GB-C80	88/70.4	80/64	6BT5.9-G1	86	92	6	102 x 120	20.5	223 x 83 x 149	276 x 112 x 173
GB-C100	110/88	100/80	6BT5.9-G2	92	100	6	102 x 120	20.5	223 x 83 x 149	323 x 115 x 178
GB-C125	138/110	125/100	6BTA5.9-G2	110	120	6	102 x 120	24	223 x 83 x 149	323 x 115 x 178
GB-C150	165/123	150/120	6BTA5.9-G2	120	130	6	102 x 120	27.4	223 x 83 x 149	323 x 115 x 178
GB-C150	165/123	150/120	6BTA5.9-G2	120	130	6	102 x 120	28	223 x 83 x 149	323 x 115 x 178
GB-C180	200/160	180/144	6CTA8.3-G2	163	180	6	114 x 135	32	223 x 83 x 149	323 x 115 x 178
GB-C200	220/176	200/160	6CTAA8.3-G2	183	200	6	114 x 135	42.7	223 x 83 x 149	323 x 115 x 178
GB-C250	275/200	250/200	6LTA8.9-G2	220	245	6	114 x 135	53	223 x 83 x 149	359 x 124 x 208
GB-C300	330/264	300/240	NTA855-G1A	261	287	6	140 x 152	72	223 x 83 x 149	359 x 124 x 208
GB-C325	358/286	325/260	NTA855-G1B	284	312.4	6	140 x 152	72	250 x 83 x 150	359 x 124 x 208
GB-C350	385/308	350/280	NTA855-G2A	313	343	6	140 x 152	76	302 x 110 x 185	423 x 144 x 220
GB-C400	440/352	400/320	NTAA855-G7A	370	407	6	140 x 152	76	302 x 110 x 185	423 x 144 x 220
GB-C450	500/400	450/360	KTA19-G3	403	448	6	159 x 159	92.1	304 x 126 x 205	463 x 164 x 230
GB-C500	550/440	500/400	KTA19-G4	448	504	6	159 x 159	101.2	304 x 126 x 205	463 x 164 x 230
GB-C550	605/484	550/440	KTAA19-G5	470	550	6	159 x 159	121.5	304 x 126 x 205	503 x 184 x 253
GB-C600	660/528	600/480	KTAA19-G8	523	575	6	159 x 159	125	304 x 126 x 205	503 x 184 x 253
GB-C625	688/550	625/500	KTAA19-G6A	550	610	6	159 x 159	128.2	304 x 126 x 205	503 x 184 x 253
GB-C750	825/660	750/600	KTA38-G2	664	731	12	159 x 159	161.8	450 x 178 x 243	20FT
GB-C800	880/704	800/640	KTA38-G2B	711	789	12	159 x 159	160.2	450 x 178 x 243	20FT
GB-C900	1000/800	900/720	KTA38-G2A	813	895	12	159 x 159	182.4	450 x 178 x 243	20FT
GB-C1000	1100/880	1000/800	KTA38-G5	880	970	16	159 x 159	199.4	450 x 178 x 243	20FT
GB-C1125	1237/990	1125/900	KTA38-G9	990	1089	16	159 x 159	256	450 x 210 x 220	20FT
GB-C1250	1375/1100	1250/1000	KTA50-G3	1097	1207	16	159 x 159	260	500 x 210 x 230	40HQ
GB-C1400	1540/1232	1400/1120	KTA50-G8	1200	1320	16	159 x 159	288	500 x 210 x 230	40HQ
GB-C1500	1650/1320	1500/1200	KTA50-GS8	1287	1429	16	159 x 159	308	500 x 210 x 230	40HQ
GB-C1875	2062/1650	1875/1500	QSK60-G3	1615	1790	16	159 x 190	363	600 x 220 x 260	40HQ
GB-C2000	2200/1760	2000/1600	QSK60-G4	1695	1861	16	159 x 190	394	600 x 220 x 260	40HQ

GENERATOR

เครื่องกำเนิดไฟฟ้า, เครื่องปั่นไฟ



CUMMINS engines. Through near ten years of cooperation with CUMMINS, GB C series with its high reliability, low cost for use and maintenance to win the loyalty of many customers in the field of Army, transportation engineering system and mine industries. Established in 1919, headquartered in Columbus, Indiana, (USA) Cummins Inc, serves customers in more than 160 countries and territories through its network of 680 Company-owned and independent distributor locations and more than 5,000 dealer locations. As the largest foreign engine investors of China, Cummins possess Chongqing Cummins Engine Co., Ltd (produce M, N, K series engine) and Dongfeng Cummins Engine Co., Ltd (produce B,C, L series engine) and produce CUMMINS engines with globally uniform quality standard.

1-60HZ CUMMINS

GENERATOR SET SPECIFICATION



Frequency 60HZ			CUMMINS Diesel Engine (Water Cooled 1800 RPM)						Dimansion (L x W x H)	
Genset Model	Standby Power	Prime Power	Engine Model	Prime Power	Standby Power	Cylinder	Bore Storke	Consumption 100% Loading	Open Type	Silent Type
	(KVA/KW)	(KVA/KW)		(KW)	(KW)		(MM)	(L/H)	(CM)	(CM)
GB-C25	28/22	25/20	4B3.9-G1	27	30	4	102 X 120	6	182 X 76 X 128	220 X 90 X 110
GB-C30	33/26.4	30/24	4B3.9-G2	27	30	4	102 X 120	6	182 X 76 X 128	220 X 90 X 110
GB-C40	44/35.2	40/32	4BT3.9-G2	40	44	4	102 X 120	13	182 X 76 X 128	220 X 104 X 158
GB-C63	69/55	63/50	4BTA3.9-G2	59	65	4	102 X 120	15	182 X 76 X 128	220 X 104 X 158
GB-C100	110/88	100/80	6BT5.9-G2	100	110	6	102 X 120	24	223 X 83 X 149	276 X 112 X 173
GB-C125	138/110	125/100	6BTA5.9-G2	118	130	6	102 X 120	26	223 X 83 X 149	323 X 115 X 178
GB-C150	165/132	150/120	6BTA5.9-G2	130	143	6	102 X 120	30	223 X 83 X 152	323 X 115 X 178
GB-C175	193/154	175/140	6CTA8.3-G2	173	190	6	114 X 135	41	248 X 88 X 149	323 X 115 X 178
GB-C200	212/170	200/160	6CTA8.3-G2	173	190	6	114 X 135	41	248 X 88 X 149	323 X 115 X 178
GB-C220	242/194	220/176	6CTA8.3-G2	200	220	6	114 X 135	51	250 X 83 X 150	359 X 116 X 203
GB-C250	275/220	250/200	6CTAA8.9-G2	220	240	6	114 X 145	54	250 X 83 X 150	359 X 116 X 203
GB-C300	330/264	300/240	NTA855-G1	288	317	6	140 X 152	60	307 X 110 X 185	423 X 144 X 220
GB-C350	385/308	350/280	NTA855-G1B	315	347	6	140 X 152	70	307 X 110 X 185	423 X 144 X 220
GB-C400	440/352	400/320	NTA855-G3	363	399	6	140 X 152	80.5	307 X 110 X 185	423 X 144 X 220
GB-C450	495/396	450/360	KTA19-G2	407	448	6	159 X 159	88	340 X 126 X 205	463 X 164 X 230
GB-C500	550/440	500/400	KTA19-G3	465	511	6	159 X 159	102.5	340 X 126 X 205	463 X 164 X 230
GB-C562	625/500	562/450	KTA19-G4	512	563	6	159 X 159	113	340 X 126 X 205	463 X 164 X 230
GB-C625	605/484	550/440	KTAA19-G5	533	605	6	159 X 159	125	340 X 126 X 205	503 X 184 X 253
GB-C688	756/605	688/550	KTAA19-G6A	604	664	6	159 X 159	128	340 X 126 X 205	503 X 184 X 253
GB-750	825/660	750/600	KT38-G	679	747	12	159 X 159	141	455 X 210 X 232	20FT
GB-C900	990/792	900/720	KTA38-G2	814	895	12	159 X 159	182	455 X 210 X 232	20FT
GB-C1000	1100/880	1000/800	KTA38-G2A	915	1007	12	159 X 159	200	455 X 210 X 232	20FT
GB-C1125	1238/990	1125/900	KTA38-G4	1011	1112	12	159 X 159	232	455 X 210 X 232	20FT
GB-C1250	1375/1100	1250/1000	KTA38-G9	1110	1220	12	159 X 159	266	500 X 220 X 220	20FT
GB-C1500	1650/1320	1500/1200	KTA50-G9	1384	1657	16	159 X 159	330	500 X 220 X 220	40HQ

GENERATOR

เครื่องกำเนิดไฟฟ้า, เครื่องปั่นไฟ



Water Cooled DEUTZ (50HZ) Standard Type

Founded in 1864, DEUTZ was the first engine manufacturer in the world, exquisite manufacturing technologies and predominant engine products do not only make DEUTZ the consititutor of world diesel engine standards, but also construct a huge platform for its cooperation with other partners all over the world. DEUTZ has already been one of the biggest three engine suppliers in diesel engine field. DEUTZ is a technology leader in the area of internal combustion engines. DEUTZ products meet present and upcoming emission requirements for the benefit of our customers.

1-50HZ, 1-60HZ DEUTZ GENERATOR SET SPECIFICATION



1-50HZ DEUTZ

Frequency 50HZ			DEUTZ Diesel Engine (Water Cooled 1500 RPM)						Dimansion (L x W x H)	
Genset Model	Standby Power	Prime Power	Engine Model	Prime Power	Standby Power	Cylinder	Bore Storke	Consumption 100% Loading	Open Type	Silent Type
	(KVA/KW)	(KVA/KW)		(KW)	(KW)		(MM)	(L/H)	(CM)	(CM)
GB-D60	66/53	60/48	BF4M2012	54	60	4	101 X 126	13.4	200 X 85 X 150	260 X 100 X 170
GB-D80	88/70	80/64	BF4M2012C	71	75	4	101 X 126	16	220 X 85 X 150	260 X 100 X 170
GB-D100	110/88	100/800	BF4M2013C	97	102	4	108 X 130	22.57	220 X 85 X 150	260 X 100 X 170
GB-D112	125/100	112/90	BF4M1013EC	97	102	4	108 X 130	22.57	220 X 85 X 150	260 X 100 X 170
GB-D125	138/110	125/100	BF4M1013FC	117	129	4	108 X 130	27.6	220 X 85 X 150	260 X 100 X 170
GB-D162	180/144	162/130	BF6M1013EC	146	153	6	108 X 130	32.3	240 X 100 X 170	300 X 110 X 180
GB-D182	200/160	182/145	BF6M1013FCG2	166	183	6	108 X 130	37.8	240 X 100 X 170	300 X 110 X 180
GB-D200	220/176	200/160	BF6M1013FCG3	183	201	6	108 X 130	46.7	240 X 100 X 170	300 X 110 X 180
GB-D225	248/198	225/180	BF6M1015C-LA GA	208	231	6	132 X 145	48.2	240 X 100 X 175	300 X 110 X 185
GB-D250	275/220	250/200	BF6M1015C-LA G1A	228	250	6	132 X 145	52.8	240 X 100 X 175	300 X 110 X 185
GB-D300	330/264	300/240	BF6M1015C-LA G3A	282	314	6	132 X 145	58.7	250 X 100 X 175	320 X 110 X 185
GB-D350	386/308	350/280	BF6M1015C-LA G4	310	345	6	132 X 145	71	280 X 110 X 175	340 X 120 X 190
GB-D375	413/330	375/300	BF6M1015CP-LA G	328	365	6	132 X 145	76	280 X 110 X 175	340 X 120 X 190
GB-D438	480/385	438/350	BF8M1015C-LA G1A	388	418	8	132 X 145	92	280 X 110 X 180	340 X 120 X 190
GB-D450	495/396	450/360	BF8M1015C-LA G2	403	440	8	132 X 145	94.7	300 X 110 X 180	400 X 130 X 190
GB-D500	550/440	500/400	BF8M1015CP-LA G2	448	490	8	132 X 145	105	340 X 140 X 190	400 X 150 X 190
GB-D550	605/484	550/440	BF8M1015CP-LA G4	480	530	8	132 X 145	115.7	340 X 140 X 190	440 X 150 X 220
GB-D600	660/528	600/480	BF8M1015CP-LA G5	509	560	8	132 X 145	122.8	340 X 140 X 190	440 X 150 X 220

1-60HZ DEUTZ

Frequency 60HZ			DEUTZ Diesel Engine (Water Cooled 1800 RPM)						Dimansion (L x W x H)	
Genset Model	Standby Power	Prime Power	Engine Model	Prime Power	Standby Power	Cylinder	Bore Storke	Consumption 100% Loading	Open Type	Silent Type
	(KVA/KW)	(KVA/KW)		(KW)	(KW)		(MM)	(L/H)	(CM)	(CM)
GB-D62.5	69/55	62.5/50	BF4M2012	63	70	4	101 X 126	16.2	200 X 85 X 150	260 X 100 X 170
GB-D80	88/70	80/64	BF4M2012C	79	88	4	101 X 126	19.4	200 X 85 X 150	260 X 100 X 170
GB-D100	110/88	100/88	BF4M1013E	85	89	4	108 X 130	21	200 X 85 X 150	260 X 100 X 170
GB-D112	125/100	112/90	BF4M1013EC	105	110	4	108 X 130	24.5	200 X 85 X 150	260 X 100 X 170
GB-D125	138/110	125/100	BF4M1013FC	116	112	4	108 X 130	27.6	200 X 85 X 150	260 X 100 X 170
GB-D165	179/143	162/130	BF6M1013EC	148	155	6	108 X 130	33.3	240 X 100 X 170	300 X 110 X 180
GB-D200	220/176	200/160	BF6M1013FCG2	186	204	6	108 X 130	46.3	240 X 100 X 170	300 X 110 X 180
GB-D225	248/198	220/180	BF6M1013FCG3	204	225	6	108 X 130	49	240 X 100 X 170	300 X 110 X 180
GB-D250	275/220	250/200	BF6M1015C-LA G1B	224	271	6	132 X 145	52	240 X 100 X 175	300 X 110 X 185
GB-D300	313/250	300/240	BF6M1015C-LA G2B	279	310	6	132 X 145	64	250 X 100 X 175	300 X 110 X 185
GB-D312	344/275	312/250	BF6M1015C-LA G3B	306	341	6	132 X 145	70	250 X 100 X 175	320 X 110 X 185
GB-D450	495/396	450/360	BF8M1015C-LA G1B	408	454	8	132 X 145	94.5	280 X 110 X 180	340 X 120 X 190
GB-D500	550/440	500/400	BF8M1015C-LA G1B	429	477	8	132 X 145	101	300 X 110 X 180	400 X 130 X 190

GENERATOR

เครื่องกำเนิดไฟฟ้า, เครื่องปั่นไฟ



SILENT TYPE POWER BY AIR COOLED DEUTZ (50HZ) (60HZ)

GB D A series generator set , power coverage from 8KW to 160KW, DEUTZ air-cooled diesel cold motivation is the best among the similar product. Air-cooled engine features: Compact structural design , easy maintenance. Direct forced air-cooled diesel engine air-cooling, no water pumps, water pipes, water tanks and other components, cylinder block and cylinder heads for the split, no cooling water interlayer. Simple structure, small size and light weight. There is no leakage, Frost Crack and the formation of scale lead to overheating and failure of the oil machine, greatly simplifying the maintenance work environmental adaptability, high reliability and wide range of applications generating units in stable condition.

Subject to environmental impact is small, can be -40 C ~ 50 C temperature range and reliable work. Apply to cold, heat, desert, forest, highlands, and the water district, especially be suitable for work in high temperature desert area, no need to add any water.



GENERATOR SET SPECIFICATION 1-50 HZ DEUTZ

Frequency 50HZ			DEUTZ Diesel Engine (Water Cooled 1500 RPM)						Dimansion (L x W x H)	
Genset Model	Standby Power	Prime Power	Engine Model	Prime Power	Standby Power	Cylinder	Bore Storke	Consumption 100% Loading	Open Type	Silent Type
	(KVA/KW)	(KVA/KW)		(KW)	(KW)		(MM)	(L/H)	(CM)	(CM)
GB-D30	33/26.4	30/24	D226B-3D	30	33	3	105 X 120	8.1	180 X 78 X 115	220 X 100 X 150
GB-D40	44/35	40/32	TD226B-3D	46	50	3	105 X 120	11.5	180 X 78 X 115	220 X 100 X 150
GB-D50	55/44	50/40	TD226B-3D	46	50	3	105 X 120	11.5	180 X 78 X 115	220 X 100 X 150
GB-D70	77/62	70/56	TD226B-4D	60	66	4	105 X 120	14.6	200 X 85 X 150	260 X 110 X 160
GB-D100	100/80	100/80	TBD226B-4D	90	99	4	105 X 120	20	200 X 85 X 150	260 X 110 X 160
GB-D140	140/112	140/112	TBD226B-6D	120	132	6	105 X 120	28	240 X 95 X 280	320 X 115 X 180
GB-D160	160/128	160/128	TBD226B-6D5	136	150	6	105 X 120	32	240 X 95 X 280	320 X 115 X 180

GENERATOR SET SPECIFICATION 1-60 HZ DEUTZ

Frequency 60HZ			DEUTZ Diesel Engine (Water Cooled 1600 RPM)						Dimansion (L x W x H)	
Genset Model	Standby Power	Prime Power	Engine Model	Prime Power	Standby Power	Cylinder	Bore Storke	Consumption 100% Loading	Open Type	Silent Type
	(KVA/KW)	(KVA/KW)		(KW)	(KW)		(MM)	(L/H)	(CM)	(CM)
GB-D40	44/35	40/32	D266B-3D	36	40	3	105 X 120	9	180 X 78 X 115	220 X 100 X 150
GB-D50	55/44	50/40	TD226B-3D	50	55	3	105 X 120	12.5	180 X 78 X 115	220 X 100 X 150
GB-D80	88/70.4	80/64	TD226B-4D	70	77	4	105 X 120	16	200 X 85 X 150	260 X 110 X 160
GB-D100	110/88	100/80	TBD226B-4D	100	110	4	105 X 120	22	200 X 85 X 150	260 X 110 X 160
GB-D150	165/132	150/120	TBD226B-6D	135	144	6	105 X 120	31	240 X 95 X 280	320 X 115 X 180
GB-D180	198/158.4	180/144	TBD226B-6D5	150	165	6	105 X 120	33	240 X 95 X 280	320 X 115 X 180

GENERATOR

เครื่องกำเนิดไฟฟ้า, เครื่องปั่นไฟ

ISUZU

SILENT TYPE POWER BY ISUZU (50HZ) (1-60HZ)

Founded in 1916, ISUZU Motors has the longest history of any Japanese vehicle manufacturer. For nearly 70 years, ISUZU has been pioneering numerous technological innovations in the diesel engine field. With a cumulative total production of nearly 19 million diesel engines from its foundation, ISUZU is poised for sharpening its edge as the leading diesel manufacturer. ISUZU products now benefit people in over 100 countries. To ensure the most advanced safety, economic and environmental performance as well as super service, we are moving forward in product development, quality, manufacturing systems and customer support, which will become the new global standards of excellence. It is an uncompromising commitment to improvement for better products and a better partnership with the world.



GENERATOR SET SPECIFICATION

1-50 HZ ISUZU

Frequency 50HZ			ISUZU Diesel Engine (Water Cooled 1500 RPM)						Dimansion (L x W x H)	
Genset Model	Standby Power	Prime Power	Engine Model	Prime Power	Standby Power	Cylinder	Bore Storke	Consumption 100% Loading	Open Type	Silent Type
	(KVA/KW)	(KVA/KW)		(KW)	(KW)		(MM)	(L/H)	(CM)	(CM)
GB-125	27.5/22	25/20	4JB1	24	27	4	93 X 102	6.23	195 X 82 X 115	220 X 90 X110
GB-130	33/26.4	30/24	4JB1T	28	32	4	93 X 102	7.27	195 X 82 X 115	220 X 90 X110
GB-140	44/35	40/32	4JB1TA	36	40	4	93 X 102	8.71	195 X 82 X 115	220 X 90 X110

1-60 HZ ISUZU

Frequency 60HZ			ISUZU Diesel Engine (Water Cooled 1800 RPM)						Dimansion (L x W x H)	
Genset Model	Standby Power	Prime Power	Engine Model	Prime Power	Standby Power	Cylinder	Bore Storke	Consumption 100% Loading	Open Type	Silent Type
	(KVA/KW)	(KVA/KW)		(KW)	(KW)		(MM)	(L/H)	(CM)	(CM)
GB-130	33/26.4	30/24	4JB1	28	32	4	93 X 102	7.1	195 X 82 X 115	220 X 90 X110
GB-138	42/33	38/30	4JB1T	34	38	4	93 X 102	8.19	195 X 82 X 115	220 X 90 X110
GB-145	50/40	45/36	4JB1TA	43	48	4	93 X 102	11.7	195 X 82 X 115	220 X 90 X110

GENERATOR

เครื่องกำเนิดไฟฟ้า, เครื่องปั่นไฟ



GB YM series generator set, using Yanmar engine as power, Yanmar(Janpan) was founded in 1912 and developed the world's first commercial viable small diesel engine in 1933, due to the compact design, easy to operate, enviromental friendly, low fuel consumption, this series generator set are suitable for super silent design, which are popular for hospitals, telecom company stations, hotels and living areas.

SILENT TYPE POWER BY YANMAR (50HZ) (60HZ)



1-50HZ YANMAR

Frequency 50HZ			YANMAR Diesel Engine (Water Cooled 1500 RPM)						Dimansion (L x W x H)	
Genset Model	Standby Power	Prime Power	Engine Model	Prime Power	Standby Power	Cylinder	Bore Storke	Consumption 100% Loading	Open Type	Silent Type
	(KVA/KW)	(KVA/KW)		(KW)	(KW)		(MM)	(L/H)	(CM)	(CM)
GB-YM6	6.6/5.2	6/4.7	3TNM68-GGE	5.5	6.1	3	68 X 72	1.65	120 X 60 X 80	155 X 80 X 100
GB-YM6	8.8/7	8/6.4	3TNV76-GGE	8.2	9	3	76 X 82	2.4	120 X 60 X 80	160 X 80 X 100
GB-YM10	11/8.8	10/8	3TNV82A-GGE	9.9	11	3	82 X 84	2.74	120 X 60 X 80	160 X 80 X 100
GB-YM12.5	14/11	12.5/10	3TNV88-GGE	12.2	13.2	3	88 X 90	3.37	130 X 65 X 100	170 X 80 X 110
GB-YM17.5	16.5/13.2	15/12	3TNV84T-GGE	14.1	15.5	3	84 X 90	3.9	140 X 65 X 100	170 X 80 X 110
GB-YM15	19/15.4	17.5/14	4TNV88-GGE	16.4	17.7	4	88 X 90	4.54	170 X 65 X 110	210 X 90 X 120
GB-YM20	22/17.6	20/16	4TNV84T-GGE	19.1	21	4	84 X 90	5.28	170 X 65 X 110	220 X 90 X 120
GB-YM30	33/26.4	30/24	4TNV98-GGE	30.7	34.1	4	98 X 110	8	170 X 65 X 110	220 X 90 X 120
GB-YM40	44/35.2	40/32	4TNV98T-GGE	37.7	41.4	4	98 X 110	9.45	180 X 75 X 110	230 X 100 X 130
GB-YM50	55/44	50/40	4TNV106-GGE	44.9	49.4	4	106 X 125	12	180 X 65 X 110	230 X 100 X 130
GB-YM60	66/52.8	60/48	4TNV106T-GGE	50.9	56	4	106 X 125	13.6	200 X 80 X 110	240 X 100 X 130

1-60 YANMAR

Frequency 60HZ			YANMAR Diesel Engine (Water Cooled 1800 RPM)						Dimansion (L x W x H)	
Genset Model	Standby Power	Prime Power	Engine Model	Prime Power	Standby Power	Cylinder	Bore Storke	Consumption 100% Loading	Open Type	Silent Type
	(KVA/KW)	(KVA/KW)		(KW)	(KW)		(MM)	(L/H)	(CM)	(CM)
GB-YM8	8.8/7	8/6.4	3TNM68-GGE	6.6	7.3	3	68 X 72	1.97	120 X 60 X 80	155 X 80 X 100
GB-YM10	11/8.8	10/8	3TNV76-GGE	9.8	10.7	3	76 X 82	2.87	120 X 60 X 80	160 X 80 X 100
GB-YM12.5	14/11	12.5/10	3TNV82A-GGE	12	13.2	3	82 X 84	3.32	120 X 60 X 80	160 X 80 X 100
GB-YM15	16.5/13	15/12	3TNV88-GGE	14.7	16.2	3	88 X 90	4.06	130 X 65 X 100	170 X 80 X 110
GB-YM17.5	19/15	17.5/14	3TNV84T-GGE	16.6	18.3	3	84 X 90	4.59	140 X 65 X 100	170 X 80 X 110
GB-YM20	22/17.6	20/16	4TNV88-GGE	19.6	21.6	4	88 X 90	5.42	170 X 65 X 110	210 X 90 X 120
GB-YM25	27.5/22	25/20	4TNV84T-GGE	24.2	26.8	4	84 X 90	6.69	170 X 65 X 110	220 X 90 X 120
GB-YM30	33/26.4	30/24	4TNV98-GGE	36.4	40.8	4	98 X 110	9.5	170 X 65 X 110	220 X 90 X 120
GB-YM37.5	41/33	37.5/30	4TNV98-GGE	36.4	40.8	4	98 X 110	9.5	170 X 65 X 110	220 X 90 X 120
GB-YM50	55/44	50/40	4TNV98T-GGE	45.3	50.1	4	98 X 110	11.3	180 X 75 X 110	230 X 100 X 130
GB-YM56	63/50	56/45	4TNV106-GGE	53.3	58.7	4	106 X 125	14.3	180 X 65 X 110	230 X 100 X 130
GB-YM62.5	69/55	62.5/50	4TNV106T-GGE	60.9	67	4	106 X 125	16.3	200 X 80 X 110	240 X 100 X 130

GENERATOR

เครื่องกำเนิดไฟฟ้า, เครื่องปั่นไฟ

VOLVO PENTA

Volvo Penta was founded in 1907 in conjunction with the production of the first marine engine B1. The Pentacompany soon became an established internal combustion engine manufacturer, which in 1927 delivered the engine for Volvo's first passenger car.

Now Volvo Penta is a world-leading supplier of engines and complete power systems for marine and industrial applications. It provides internal combustion engines (ICEs) and complete power systems to the boating industry, power-generating equipment, and similar industrial applications. The engine program comprises petroleum fuel (diesel and petrol) engines with power outputs of between 7.5 and 1,500 kilowatts (10 and 2,012 bhp).

1-50HZ, 1-60HZ VOLVO PENTA GENERATOR SET SPECIFICATION



1-50HZ VOLVO PENTA

Frequency 50HZ			VOLVO PENTA Diesel Engine (Water Cooled 1500 RPM)						Dimension (L x W x H)	
Genset Model	Standby Power	Prime Power	Engine Model	Prime Power	Standby Power	Cylinder	Bore Stroke	Consumption 100% Loading	Open Type	Silent Type
	(KVA/KW)	(KVA/KW)		(KW)	(KW)		(MM)	(L/H)	(CM)	(CM)
GB-V80	88/70.4	80/64	TD520GE	75	83	4	108 X 130	14	210 X 85 X 145	280 X 106 X 156
GB-V100	110/88	100/80	TAD531GE	88	98	4	108 X 130	19	220 X 90 X 155	300 X 116 X 160
GB-V130	143/144	130/104	TAD532GE	116	125	4	108 X 130	24	220 X 90 X 155	300 X 116 X 160
GB-V150	165/132	150/120	TAD731GE	133	148	6	108 X 130	29	250 X 100 X 155	320 X 126 X 180
GB-V180	198/158	180/144	TAG732GE	161	179	6	108 X 130	36	260 X 105 X 160	360 X 146 X 190
GB-V200	220/176	200/160	TAG733GE	177	197	6	108 X 130	38	260 X 105 X 160	360 X 146 X 190
GB-V250	275/220	250/200	TAG734GE	216	241	6	108 X 130	48	270 X 110 X 165	360 X 146 X 190
GB-V350	385/308	350/280	TAD941GE	280	308	6	120 X 138	66.1	300 X 120 X 165	400 X 156 X 205
GB-V375	412.5/330	375/300	TAD1343GE	305	349	6	131 X 150	68	300 X 120 X 165	460 X 166 X 220
GB-V400	440/352	400/320	TAD1344GE	349	392	6	131 X 158	73	310 X 120 X 180	460 X 166 X 220
GB-V450	495/396	450/360	TAD1345GE	396	435	6	131 X 158	83	310 X 120 X 180	480 X 186 X 225
GB-V500	550/440	400/400	TAD1641GE	430	473	6	144 X 165	93	320 X 120 X 190	480 X 186 X 225
GB-V600	660/528	600/480	TAD1642GE	498	554	6	144 X 165	105	350 X 120 X 200	480 X 186 X 225
GB-V625	687.5/550	625/500	TWD1643GE	536	596	6	144 X 165	116	350 X 120 X 200	480 X 186 X 225

1-60HZ VOLVO PENTA

Frequency 60HZ			VOLVO PENTA Diesel Engine (Water Cooled 1800 RPM)						Dimension (L x W x H)	
Genset Model	Standby Power	Prime Power	Engine Model	Prime Power	Standby Power	Cylinder	Bore Stroke	Consumption 100% Loading	Open Type	Silent Type
	(KVA/KW)	(KVA/KW)		(KW)	(KW)		(MM)	(L/H)	(CM)	(CM)
GB-V90	100/79	90/72	TD520GE	82	85	4	108 X 130	17	210 X 85 X 145	280 X 106 X 156
GB-V100	110/88	100/80	TAD531GE	93	104	4	108 X 130	21	220 X 90 X 155	300 X 116 X 160
GB-V130	143/144	130/104	TAD532GE	115	129	4	108 X 130	26	220 X 90 X 155	300 X 116 X 160
GB-V150	165/132	150/120	TAD731GE	138	154	6	108 X 130	31	250 X 100 X 155	320 X 126 X 180
GB-V180	198/158	180/144	TAG732GE	176	197	6	108 X 130	41	260 X 105 X 160	360 X 146 X 190
GB-V200	220/176	200/160	TAG733GE	195	218	6	108 X 130	47	260 X 105 X 160	360 X 146 X 190
GB-V250	275/220	250/200	TAG734GE	214	238	6	108 X 130	48	270 X 110 X 165	360 X 146 X 190
GB-V350	385/308	350/280	TAD941GE	288	319	6	120 X 138	68	300 X 120 X 165	400 X 156 X 205
GB-V375	412.5/330	375/300	TAD1343GE	320	356	6	131 X 150	75	300 X 120 X 165	460 X 166 X 220
GB-V400	440/352	400/320	TAD1344GE	350	389	6	131 X 158	85	310 X 120 X 180	460 X 166 X 220
GB-V450	495/396	450/360	TAD1345GE	396	435	6	131 X 158	95	310 X 120 X 180	480 X 186 X 225
GB-V500	550/440	400/400	TAD1641GE	485	546	6	144 X 165	109	320 X 120 X 190	480 X 186 X 225
GB-V600	660/528	600/480	TAD1642GE	532	585	6	144 X 165	123	350 X 120 X 200	480 X 186 X 225
GB-V625	687.5/550	625/500	TWD1643GE	585	644	6	144 X 165	131	350 X 120 X 200	480 X 186 X 225

GENERATOR

เครื่องกำเนิดไฟฟ้า, เครื่องปั่นไฟ

GB POWER

GB POWER series generator set, power coverage from 8KW to 1000KW, full range of engine according to the world emission standards, from E-3, E-4 and E-5 standards, GB POWER engine to high powered, high torque, high reliability, low fuel consumption, low emission, low noise, the performance is outstanding and the emission capability is well. Also, the production has been certificated by the ISO9001 and TS16949 quality system.

สายด่วน 082-1288881, 081-7731860

OFFICE 02-9744354-6

1-50HZ GB-POWER GENERATOR SET SPECIFICATION



1-50HZ GB-POWER GENERATOR SET SPECIFICATION

Frequency 50HZ			GB POWER Diesel Engine (Water Cooled 1500 RPM)						Dimansion (L x W x H)	
Genset Model	Standby Power	Prime Power	Engine Model	Prime Power	Standby Power	Cylinder	Bore Storke	Consumption 100% Loading	Open Type	Silent Type
	(KVA/KW)	(KVA/KW)		(KW)	(KW)		(MM)	(L/H)	(CM)	(CM)
GB-10	11/8.8	10/8	GB380D	10	11	3	80 X 90	3	160 X 70 X 100	180 X 85 X 110
GB-12.5	14/11	12.5/10	GB385D	11	12	3	85 X 90	3.36	160 X 70 X 108	180 X 85 X 110
GB-15	16.5/13	15/12	GB480D	14	15.4	4	80 X 90	3.95	166 X 73 X 108	200 X 95 X 115
GB-20	22/17.6	20/16	GB485D	17	18.7	4	85 X 90	4.7	166 X 73 X 108	200 X 95 X 115
GB-25	27.5/22	25/20	GB490D	22	24	4	90 X 105	6.04	173 X 73 X 115	210 X 100 X 125
GB-30	33/26.4	30/24	GB4102D	33	36	4	102 X 118	8.95	200 X 83 X 115	230 X 100 X 125
GB-40	44/35	40/32	GB4105D	38	41.8	4	105 X 118	10.2	200 X 83 X 115	230 X 100 X 125
GB-50	66/53	60/48	GB4105D-2	45	50	4	105 X 135	10.1	196 X 81 X 138	233 X 116 X 142
GB-60	66/53	60/48	GB4108	55	60	4	112 X 135	12.4	229 X 87 X 145	262 X 115 X 150
GB-70	69/55	63/50	GB4112ZD	60	65	4	115 X 135	13.5	229 X 87 X 145	262 X 115 X 150
GB-100	99/79	90/72	GB4112ZLD	88	96	4	112 X 135	19.6	248 X 86 X 150	260 X 110 X 140
GB-125	137.5/110	125/100	GB4112ZLD	100	110	4	112 X 135	22	248 X 86 X 150	268 X 110 X 160
GB-140	154/123	140/112	GB6112ZD	112	120	4	112 X 135	24.8	260 X 96 X 150	300 X 110 X 160
GB-150	165/132	150/120	GB6112ZD-1	132	145	6	112 X 135	29.2	260 X 96 X 150	300 X 110 X 160
GB-180	198/158	180/144	GB6112ZD-1	165	180	6	112 X 135	36.54	260 X 96 X 150	320 X 110 X 160
GB-200	220/176	200/160	GB6126ZLD	200	220	6	126 X 130	42.94	285 X 130 X 190	360 X 150 X 200
GB-250	275/220	250/200	GB6126ZLD-1	220	240	6	126 X 130	47.23	285 X 130 X 190	360 X 150 X 200
GB-275	302/242	275/220	GB6126ZLD-2	250	275	6	126 X 130	53.68	285 X 130 X 190	360 X 150 X 200
GB-300	330/264	300/240	GB135TAD28	280	308	6	138 X 150	67.39	285 X 130 X 190	360 X 150 X 200
GB-350	385/308	350/280	GB138TAD35L	309	340	6	138 X 160	75.77	370 X 148 X 220	430 X 165 X 220
GB-375	412/330	375/300	GB38TAD33L	339	373	6	138 X 160	83.13	370 X 148 X 220	450 X 165 X 220
GB-400	440/352	400/320	GB12138TAD	353	388	6	138 X 160	86.6	370 X 148 X 220	450 X 165 X 220
GB-450	522/418	450/380	GB12V138TAD	432	475	12	138 X 150	103.98	370 X 148 X 220	450 X 165 X 220
GB-500	550/440	500/400	GB12V138TAD	465	512	12	138 X 150	111.92	370 X 148 X 220	530 X 165 X 225
GB-562	618/495	562/450	GB12V138TAD	506	556	12	138 X 150	121.79	370 X 148 X 220	530 X 165 X 225
GB-625	687/550	625/500	GB12V138TAD	560	616	12	138 X 150	134.7	370 X 148 X 220	530 X 165 X 225
GB-700	770/616	700/560	GB12V138TAD	618	680	12	138 X 150	148.75	450 X 200 X 220	560 X 220 X 225
GB-750	825/660	750/600	GB12V140TAG	682	750	12	140 X 165	168	450 X 200 X 220	560 X 220 X 225
GB-1000	1100/880	1000/800	GB12V140TAG	880	968	12	140 X 165	216.78	450 X 200 X 220	560 X 220 X 225

GENERATOR

เครื่องกำเนิดไฟฟ้า, เครื่องปั่นไฟ

GB POWER

GB POWER series generator set, power coverage from 8KW to 1000KW, full range of engine according to the world emission standards, from E-3, E-4 and E-5 standards, GB POWER engine to high powered, high torque, high reliability, low fuel consumption, low emission, low noise, the performance is outstanding and the emission capability is well. Also, the production has been certificated by the ISO9001 and TS16949 quality system.

สายด่วน 082-1288881, 081-7731860

OFFICE 02-9744354-6

SILENT TYPE POWER BY GB (60HZ)



1-60HZ GB-POWER GENERATOR SET SPECIFICATION

Frequency 60HZ			GB POWER Diesel Engine (Water Cooled 1800 RPM)					Dimansion (L x W x H)		
Genset Model	Standby Power	Prime Power	Engine Model	Prime Power	Standby Power	Cylinder	Bore Stroke	Consumption 100% Loading	Open Type	Silent Type
	(KVA/KW)	(KVA/KW)		(KW)	(KW)		(MM)	(L/H)	(CM)	(CM)
GB-10	11/8.8	10/8	GB380D	12	13.2	3	80 X 90	3.59	160 X 70 X 100	180 X 85 X 110
GB-12.5	14/11	12.5/10	GB380D	12	13.2	3	80 X 90	3.59	160 X 70 X 100	180 X 85 X 110
GB-14	15/12.1	14/11	GB385D	13.2	14.5	3	85 X 90	3.91	160 X 70 X 180	180 X 85 X 110
GB-16	21/16.8	16/13.5	GB480D	17	18.7	4	80 X 90	4.78	166 X 73 X 108	200 X 95 X 115
GB-20	22/17.6	20/16	GB485D	20	22	4	85 X 90	5.54	166 X 73 X 108	200 X 95 X 115
GB-25	27.5/22	25/20	GB490D	26	28.6	4	90 X 105	7.14	173 X 73 X 115	210 X 100 X 125
GB-30	33/26.5	30/24	GB498D	30	33	4	98 X 105	8.14	173 X 73 X 115	220 X 100 X 125
GB-40	44/35	40/32	GB4102D	39.6	43.6	4	102 X 118	10.7	200 X 83 X 115	230 X 100 X 125
GB-50	55/44	50/40	GB4105D	45	49.5	4	105 X 118	11.9	200 X 83 X 115	230 X 100 X 125
GB-60	66/53	60/48	GB4108D	55	60	4	108 X 135	12.74	196 X 81 X 138	233 X 116 X 142
GB-75	69/55	63/50	GB4115D	66	72	4	115 X 135	15.29	248 X 86 X 150	260 X 110 X 140
GB-100	110/88	100/80	GB4112ZD	93	100	4	112 X 135	21	248 X 86 X 150	260 X 110 X 160
GB-125	137.5/110	125/100	GB4112ZLD	110	120	4	112 X 135	24.3	260 X 96 X 150	300 x 110 x 160
GB-140	154/123	140/112	GB6112ZD	125	136	6	112 X 135	28.2	260 X 96 X 150	310 x 110 x 160
GB-160	179/143	163/130	GB6112ZD-1	145	158	6	112 X 135	32.7	260 X 96 X 150	320 x 110 x 160
GB-200	220/176	200/160	GB6112ZLD	182	200	6	112 X 135	40.9	285 X 130 X 190	360 x 150 x 200
GB-250	275/220	250/200	GB6126ZLD	220	240	6	126 X 130	49.4	285 X 130 X 190	360 x 150 x 200
GB-275	302/242	275/220	GB6126ZLD-1	250	275	6	126 X 130	56.2	285 X 130 X 190	360 x 150 x 200
GB-300	330/264	300/240	GB135TAD28-1	280	308	6	135 X 150	67.3	320 X 100 X 190	360 x 150 x 200
GB-350	385/308	350/280	GB12V135TAD	339	373	12	135 X 150	83.5	370 X 148 X 220	430 X 165 X 220
GB-375	413/330	375/300	GB12V138TD	353	388	12	138 X 150	86.9	370 X 148 X 220	450 X 165 X 220
GB-400	440/352	400/320	GB12V135TAD	382	420	12	135 X 150	91.9	370 X 148 X 220	450 X 165 X 220
GB-450	495/396	450/360	GB12V135TAD	432	475	12	135 X 150	103.9	370 X 148 X 220	450 X 165 X 220
GB-500	550/440	500/400	GB12V138TAD	465	511	12	138 X 150	111.9	370 X 148 X 220	530 X 165 X 230
GB-550	605/484	550/440	GB12V135TAD	506	557	12	135 X 150	121.7	370 X 148 X 220	530 X 165 X 230
GB-625	688/550	625/500	GB12V13850	560	616	12	138 X 150	134.7	370 X 148 X 220	530 X 165 X 230

GENERATOR

เครื่องกำเนิดไฟฟ้า, เครื่องปั่นไฟ

Perkins

GB POWER

50HZ 1500RPM



Hydraulic Lighting tower

1. Engine by Perkins, alternator by Stamford or Leroysoner.
2. The safe and reliable powered by hydraulic ram can be extended to 9 meters altitude fully
3. The hydraulic one-way valve with electric control can keep the hydraulic ram at any position for long time
4. The metal halide lamp lights can be adjusted manually at the non-lifting position: each light can be rotated 180°. The mast can be rotated 359°
5. The light bar can be adjusted from horizontal vertical by the control panel operation
6. The inertia braking system can mostly reduce the collision when the vehicle is braking
7. Four manual legs of individual operation are able to support stably and reliably even on rough ground, so the lighting tower can also work in the 9 grade windy weather
8. Control system by Deepsea control model manually start or stop the genset and control each light independently just by its own individual switch.

Standard Equipment	GBT-4000	GBT-P4000	GBT-P6000
Length(mm)	3220(2100,the tow bar be retracted or detached)		
Width(mm)	1620	1620	1800
Height(mm)	2250	2250	2460
Height(Mast be extended fully.m)	9	9	9
Weight(dry,kg)	1250	1250	1400
Engine model	GB POWER 380	403D-11G(Perkins)	403D-15G(Perkins)
Frequency (Hz)	50	50	50
Speed(rpm)	1500	1500	1500
Continued Power(kVA)	7	7	10
Number of Cylinders	3		
Diesel Engine Characters	4-Cycle,In line, Watercooled Diesel		
Combustion Type	Direct Injection		
Engine Aspiration	Naturally aspirated	Naturally aspirated	Naturally aspirated
Emission Level		Stage 3	Stage 3
Alternator	Stamford or Loerysoner Brushless & Single phase		
Rating Voltage (V)	230		
Alternator Insulation	Class H		
Fuel Tank Type	Bunded Tank		
Type of Lights	Metal Halide floodlight		
	Rectangle(E40/E39,GEWISS)		
Number & Power of Lights	4 X 1000W	4 X 1000W	6 X 1000W
Mast Extension	Hydraulic Operation or Manual Type		
Mast Erection Time	<30 Seconds		
Mast Rotation	330° Manual Operation		
Light Bar Tilt	90° Electrically		
Control System	Deepsea3110		
Stabilizing Legs	Manually		
Trailer suspension& braking system	Leaf spring axle (hexagonal rubber axle for 4HVP) with drum brake		
Hitch&tow bar	Ball or O ring&Stable hitch in height		
Tire Rim Size	14"		
Output Sockets	1 PCS(230V, 10A)		
Acoustic Pressure	65 dB (A) AT 7 Meters away		
Max.load quantity in a 40" container(sets)	7		